

East Budleigh with Bicton Neighbourhood Development Plan

INFORMATION FOR VOTERS

Referendum: 25 May 2017

About this booklet

On 25 May 2017, there will be a referendum on a neighbourhood development plan for your area. This booklet explains more about the referendum that is going to take place and how you can be involved in it. In this booklet you can find out about:

- The referendum and how you can take part
- The neighbourhood area
- The neighbourhood plan
- The development plan [of which neighbourhood plans are part]

Referendum on the Neighbourhood Plan

A referendum asks you to vote 'yes' or 'no' to a question. For this referendum you will receive a ballot paper with this question:

"Do you want East Devon District Council to use the neighbourhood plan for East Budleigh with Bicton to help it decide planning applications in the neighbourhood area?"

How do I vote in the referendum?

You vote by putting a cross (X) in the 'Yes' or 'No' box on your ballot paper. Put a cross in only **one** box or your vote will not be counted.

If more people vote 'yes' than 'no' in this referendum, then East Devon District Council will use the Neighbourhood Development Plan to help it decide planning applications in East Budleigh with Bicton. The Neighbourhood Development Plan once 'made' will then become part of the Development Plan.

In East Devon the development plan for your area currently consists of the adopted East Devon Local Plan, 2013- 2031; the adopted Devon Waste Plan, December 2014, and the Devon Minerals Plan, 2011-2033.

If more people vote 'no' than 'yes', then planning applications will be decided without using the Neighbourhood Development Plan as part of the Development Plan for the local area.

What is a Development Plan?

In England, planning applications are determined by local planning authorities in accordance with the Development Plan. A Development Plan is a set of documents that set out the

policies for the development and use of land across the entire local authority area. Within East Devon, the local planning authority is East Devon District Council.

What is Neighbourhood Planning?

Neighbourhood planning aims to help local communities play a direct role in planning the areas in which they live and work. A community can choose to prepare a neighbourhood plan. This plan can show how the community wants land to be used and developed in its area.

What is a neighbourhood area?

A neighbourhood area can cover single streets or large urban or rural areas. The boundaries of a neighbourhood area are put forward by:

- Town or parish councils
- A neighbourhood forum (a group of at least 21 people in areas without town or parish councils)

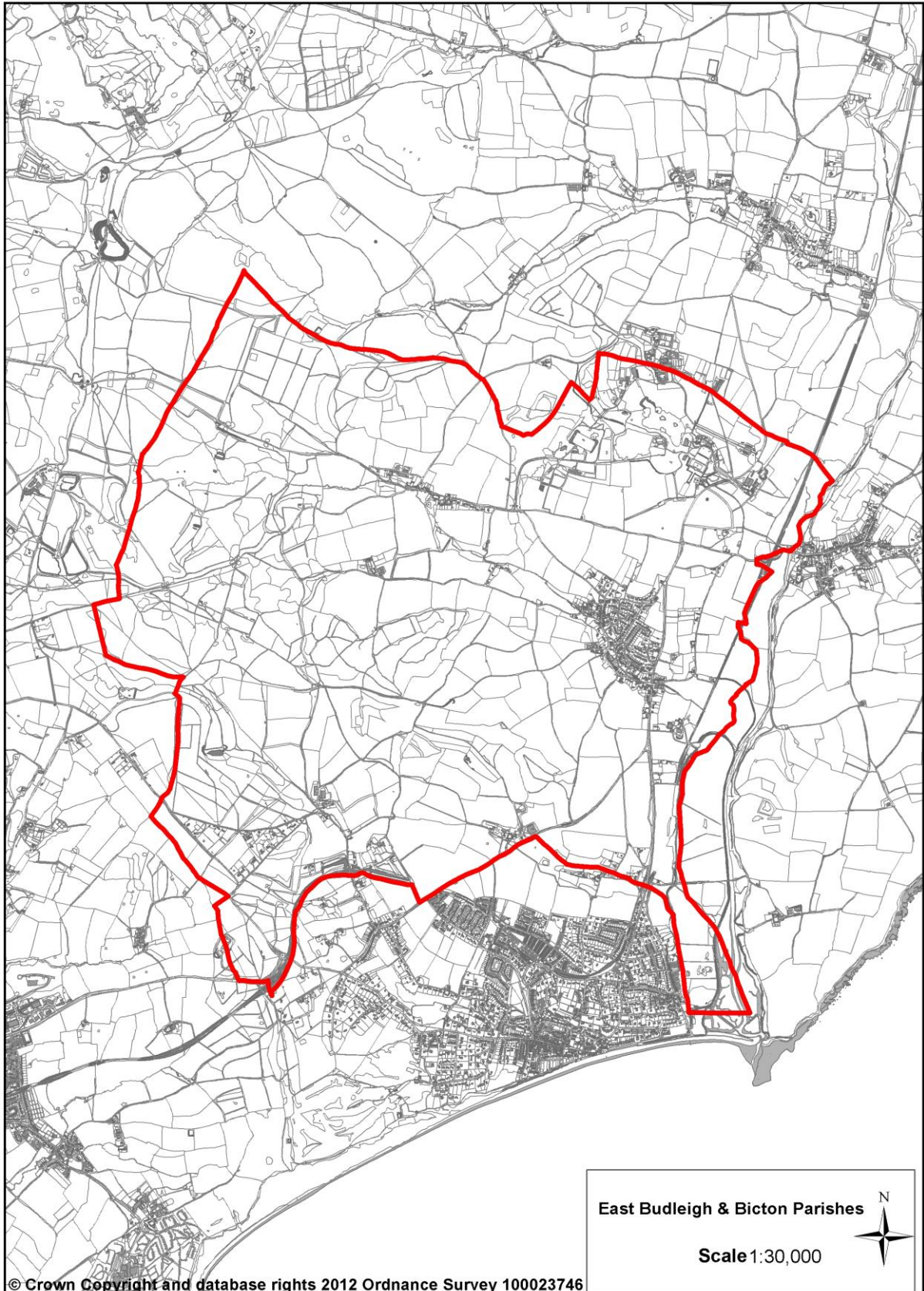
In East Budleigh with Bicton the boundary of the neighbourhood area was put forward by East Budleigh with Bicton Parish Council and determined by East Devon District Council and comprises the full extent of East Budeigh and Bicton parishes.

Who can prepare a Neighbourhood Plan?

Neighbourhood plans are prepared by town or parish councils, or neighbourhood forums. In this case, the East Budleigh with Bicton Neighbourhood Development Plan was prepared by East Budleigh with Bicton Parish Council in consultation with the local community.

Neighbourhood Planning in East Budleigh with Bicton

The Referendum area is the parish area of East Budleigh with Bicton Parish Council comprising the full extent of East Budleigh and Bicton parishes.



Referendum expenses

Expenses can be incurred by an individual or body during the period of the referendum for referendum purposes. The Referendum expenses limit that will apply in relation to this Referendum is £2410.20. The number of persons entitled to vote in the Referendum by reference to which the limit has been calculated is 817.

Specified documents

A copy of the specified documents, that is the documents listed below, may be inspected at:

- <http://eastdevon.gov.uk/elections-and-registering-to-vote/election-documents>
- East Devon District Council Offices, Knowle, Station Road, Sidmouth, Devon, EX10 8HL between the hours of 8.30am to 5.00pm Monday to Friday

The specified documents are the:

- Post examination East Budleigh with Bicton Neighbourhood Development Plan
- Report of the independent examiner
- Summary of the representations submitted to the independent examiner
- Statement by the local planning authority that the draft plan meets the basic conditions (Decision statement)
- Statement that sets out general information as to town and country planning including neighbourhood planning and the referendum (information for voters)

Can I vote?

You can vote in the referendum if you live in the East Budleigh with Bicton Parish Council area and you are registered to vote in local council elections; and you are 18 years of age or over on 25 May 2017. You have to be registered to vote by 9 May 2017 to vote in the referendum. You can check if you are registered to vote by calling our Helpline on 01395 517402.

The referendum will be conducted based on procedures which are similar to those used at local government elections.

Ways of voting?

There are three ways of voting:

In person on 25 May 2017:

- At your local polling station. It is easy and a member of staff will always help if you are not sure what to do
- In East Budleigh with Bicton, the polling station is:
 - East Budleigh Village Hall, High Street, East Budleigh, Budleigh Salterton EX9 7DU
 - You will receive a poll card for this referendum
- The polling stations is open from 7am to 10pm

By post:

- If you have a postal vote already, you will receive a poll card confirming this
- To vote by post, you will need to complete an application form and send it to the Electoral Registration Officer to arrive by 5pm on Wednesday 10 May 2017 at this address:

Electoral Services, East Devon District Council Offices, Knowle, Station Road, Sidmouth, EX10 8HL

- Postal votes can be sent overseas but you need to think about whether you will have time to receive and return your completed postal vote by 10pm on Thursday 25 May 2017
- You should receive your postal vote about a week before polling day. If it doesn't arrive in time, you can ask for a replacement up to 5pm on Thursday 25 May 2017 by contacting our Helpline on 01395 517402

By proxy:

- If you have a proxy vote already, you will receive a poll card confirming this
- If you can't get to the polling station and don't wish to vote by post, you may be able to vote by proxy. This means allowing somebody that you trust to vote on your behalf
- To vote by proxy, you will need to complete an application form and send it to Electoral Services, East Devon District Council Offices, Knowle, Station Road, Sidmouth, EX10 8HL by 5pm on Wednesday 17 May 2017
- When you apply for a proxy vote, you must say why you cannot vote in person
- Anyone can be your proxy as long as they are eligible to vote and are willing to vote on your behalf. You will have to tell them how you want to vote.

Postal and proxy vote application forms are available from our Helpline on 01395 517402 or by emailing electoralservices@eastdevon.gov.uk.

Registration forms are available from our Helpline on 01395 517402 or by emailing electoralservices@eastdevon.gov.uk.

How to find out more:

- Further general information on neighbourhood planning is available at <http://planningguidance.planningportal.gov.uk/blog/guidance/neighbourhood-planning/>
- You can find specific documents on the East Budleigh with Bicton Neighbourhood Development

Plan at: <http://eastdevon.gov.uk/elections-and-registering-to-vote/election-documents>

- For queries about planning issues and neighbourhood planning in general, please contact the Planning Policy Team on: Tel: 01395 571745