

## East Budleigh with Bicton Neighbourhood Development Plan

### INFORMATION STATEMENT

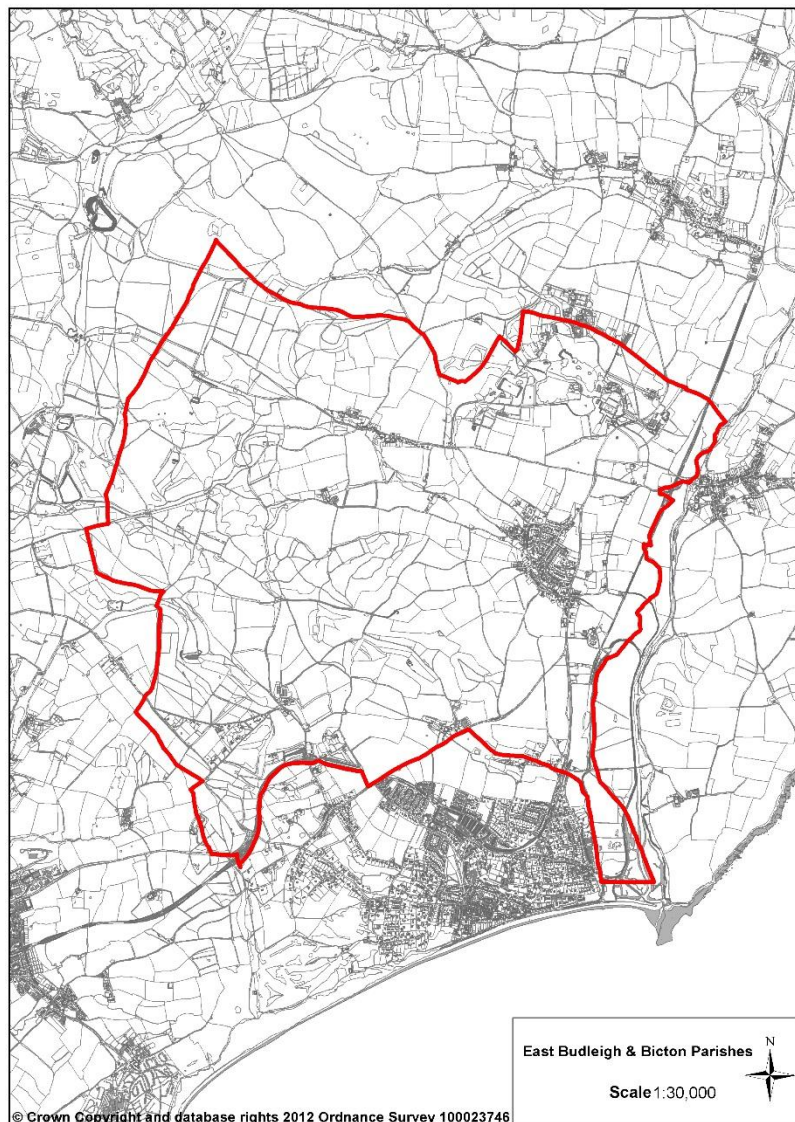
Referendum : 25 May 2017

#### Information Statement

A neighbourhood planning referendum will be held for the East Budleigh with Bicton Neighbourhood Development Plan 2016-2031 on 25 May 2017. The question asked in the referendum will be:

**Do you want East Devon District Council to use the neighbourhood plan for East Budleigh with Bicton to help it decide planning applications in the neighbourhood area?"**

The Referendum area is the parish area of East Budleigh with Bicton Parish Council comprising the full extent of East Budleigh and Bicton parishes (see map below)



A person is entitled to vote in the Referendum if on 25 May 2017

- he or she is entitled to vote in a local government election in the Referendum area; and
- his or her qualifying address for the election is in the Referendum area. A persons qualifying address is, in relation to a person registered in the register of electors, the address in respect of which he or she is entitled to be registered.

The Referendum expenses limit that will apply in relation to the Referendum is £2410.20. The number of persons entitled to vote in the Referendum by reference to which the limit has been calculated is 817.

The Referendum will be conducted in accordance with procedures which are similar to those used at local government elections.

The specified documents are the:

- Post examination East Budleigh with Bicton Neighbourhood Development Plan
- Report of the independent examiner
- Summary of the representations submitted to the independent examiner
- Statement by the local planning authority that the draft plan meets the basic conditions (Decision statement)
- Statement that sets out general information as to town and country planning including neighbourhood planning and the referendum (information for voters)

These documents can be viewed at:

- <http://eastdevon.gov.uk/elections-and-registering-to-vote/election-documents>
- East Devon District Council Offices, Knowle, Station Road, Sidmouth, Devon, EX10 8HL between the hours of 8.30am to 5.00pm Monday to Friday

For further information on Neighbourhood Planning in East Devon please contact the Planning Policy team on 01395 571745 or email [tspurway@eastdevon.gov.uk](mailto:tspurway@eastdevon.gov.uk) or [crodway@eastdevon.gov.uk](mailto:crodway@eastdevon.gov.uk).

Prepared by: Tim Spurway (Neighbourhood Planning Officer)

Published on: 12 April 2017