

# East Devon District Council

## How your council tax is spent

2013/14

Public services have had to make big savings, while continuing to provide vital local services and support the most vulnerable in our communities. This leaflet shows what it costs to provide these services. We have saved money by producing this leaflet in partnership. Next year this information will only be on our websites.

This year for an average band D property your council tax will be **£1,513.56** and it's divided up like this:

**8%** East Devon District Council  
for: refuse collection and kerbside recycling, housing, planning, street cleaning, leisure

**11%** Police and Crime Commissioner for Devon and Cornwall  
for: law and order and crime reduction

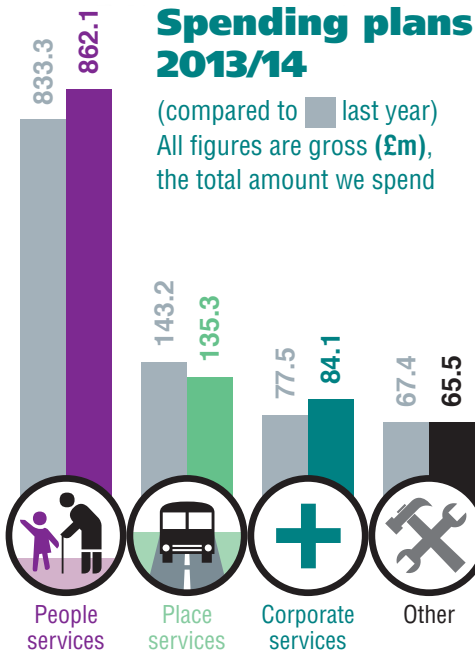
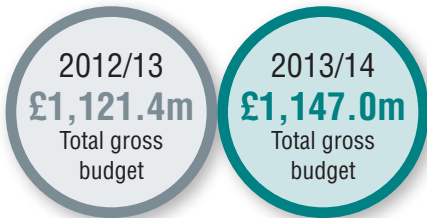
**5%** Devon & Somerset Fire & Rescue Authority  
for: fire prevention, fire and rescue

**2%** Town and Parish Councils  
for: local amenities



**74%** Devon County Council  
for: education, roads, care for the elderly and disabled, child protection, public health, libraries, recycling centres and waste disposal

Devon County Council plans to spend £1,146.961m (gross) this year (£1,121.391m 2012/13) on providing services to almost 750,000 people in Devon. £852.626m (£795.202m 2012/13) of this comes from income we receive from government grants, fees and charges which leaves a council tax requirement of £294.315m (£326.189m 2012/13). It has reduced this year due to changes in the way that Council Tax Benefit is funded.



Within these figures is £0.338m (£0.282m 2012/13) relating to the Environment Agency Flood Defence Levy. This levy supports gross expenditure of £14.446m (£13.547m 2012/13). The change in the gross expenditure and levy reflects the impact of the Government Spending Review and national prioritisation of capital projects. The total local levy raised has increased by 20%.

### Changes in spending

The transfer of Public Health from the NHS to the County Council includes a government grant of £20.7m. A further grant of £3m from the Government to fund a council tax freeze and reserves will allow investment in early years services, pothole repairs and helping people after the welfare reforms. Devon County Council's share of council tax will remain frozen for the third year running, which means a **0%** rise and Band D unchanged at £1,116.36.

#### DEVON COUNTY COUNCIL SERVICES

##### People Services

including: education, care for the elderly and disabled, child protection and youth services

##### Place Services

including: libraries, roads, transport, recycling centres and waste disposal

##### Corporate Services

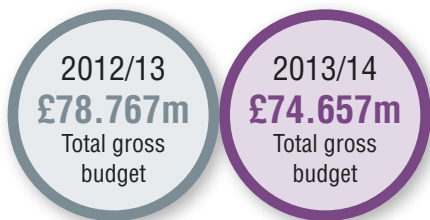
including: public health (£20.7m grant)

##### Other

including: capital financing costs

East Devon District Council plans to spend £74.657m gross in 2013/14. Around £5.5m will be spent on collecting waste and recycling, leaving £67.3m for other services which include council housing, cleaning streets, providing parks, play areas, leisure centres and recreation, administering local benefits, and planning for the district's future to ensure we have the homes and jobs we need.

This year £66.5m of this comes from grants, fees and charges (down from £71.6m last year) leaving £6.45m (down from £7.01m) to come from council tax. Over the next year £4.254m gross will be spent on capital projects. Among these are £214k towards improvements to Axe Estuary Wetlands, £300k on pollution prevention in Exmouth, £150k towards a £1.6m flood alleviation scheme in Feniton, £770k for new workshops in Seaton, and asset maintenance including £355k on sports centres and swimming pools.

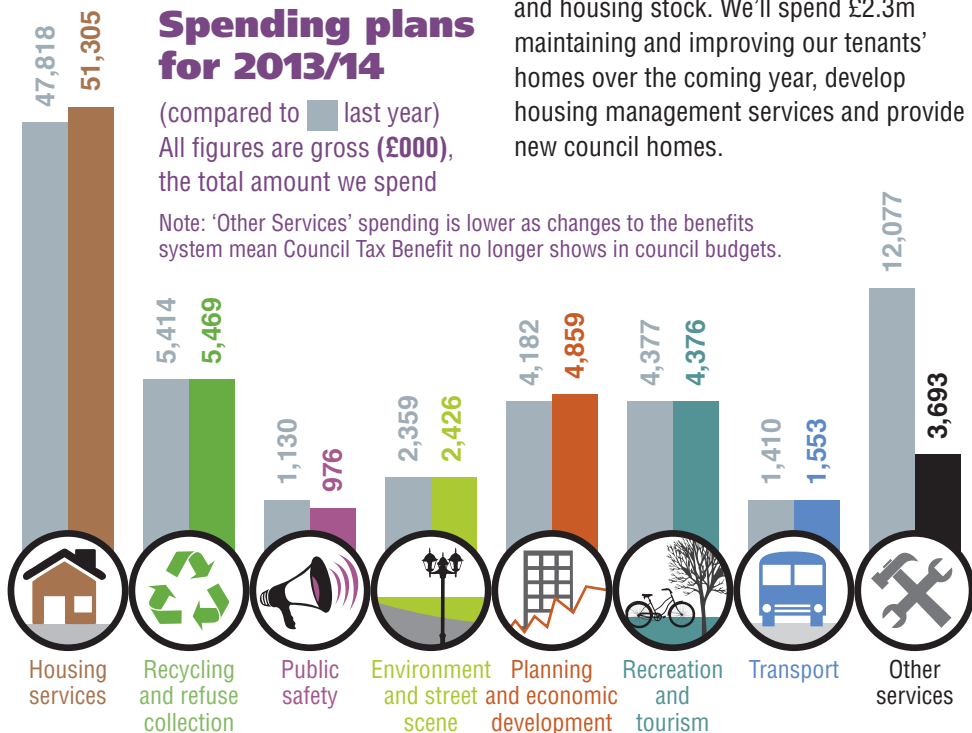


The Housing Revenue Account is now self-funding, which allows the council more financial control over its landlord services and housing stock. We'll spend £2.3m maintaining and improving our tenants' homes over the coming year, develop housing management services and provide new council homes.

## Spending plans for 2013/14

(compared to last year)  
All figures are gross (£000), the total amount we spend

Note: 'Other Services' spending is lower as changes to the benefits system mean Council Tax Benefit no longer shows in council budgets.



# Police and Crime Commissioner for Devon and Cornwall



2012/13  
**£295.1m**

Total gross  
budget

2013/14  
**£298.3m**

Total gross  
budget

This year £298.3m (compared to £295.1m in 2012/13) will be spent on policing and crime reduction in Devon, Cornwall and the Isles of Scilly. £209.1m (£196.8m in 2012/13) of this comes from grants and other income, while £89.2m (£98.3m in 2012/13) will be funded by council tax payers.

The part of council tax covering police services will increase by 2.0% in 2013/14.

The Chief Constable and the Police and Crime Panel were consulted before this decision was made. Council tax increases have an impact on local tax payers and this has been balanced with the desire of local communities and victims of crime to have an effective police service and a safer place to live.

The priorities are detailed in the Police and Crime Plan which is available to view at [www.devonandcornwall-pcc.gov.uk](http://www.devonandcornwall-pcc.gov.uk)

This includes information on how the Police and Crime Commissioner will ensure value for money.

For contact details, see back of leaflet.

## Devon & Somerset Fire & Rescue Authority



2012/13  
**£82.2m**

Total gross  
budget

2013/14  
**£79.9m**

Total gross  
budget

### Spending plans for 2013/14

Devon & Somerset Fire & Rescue Authority plans to spend £79.9m (gross) in 2013/14, compared to £82.2m (gross) in 2012/13. £28.7m of this comes from government funding (£31.5m 2012/13), and £9.4m from other income (£4.6m 2012/13). This leaves £41.8m to come from council tax payers (£46.1m 2012/13).

The Authority requires a council tax level of £75.39 for a Band D household in 2013/14. This represents an increase of 1.99% compared to the 2012/13 figure. For more information about the budget, including changes in spending plans, visit [www.dsfire.gov.uk](http://www.dsfire.gov.uk)

### Have your say

The Authority is asking people to have their say on a range of proposals designed to meet a £5.5m reduction in government funding in 2013/14 and 2014/15. There is a variety of ways to get in touch; to find out how, visit [www.dsfire.gov.uk/consultation](http://www.dsfire.gov.uk/consultation). The consultation closes on 22 April 2013.

## Help and advice

Are you paying too much council tax? Don't pay more than you have to!

### Discounts and exemptions

A full council tax bill is calculated assuming there are two people over the age of 18 living in the property. If you are living alone, you are entitled to receive a 25% discount on your bill.

Even if you don't live on your own, you may still be entitled to a discount because some of the people living with you may be exempt from paying council tax such as students, people in hospital or people in care homes.

Also, if you, or someone who lives with you, has a disability and your home has been adapted to meet this need, you may get a reduced council tax bill.

In some circumstances you may not have to pay any council tax. For example, if everyone in the property is a student, is severely mentally impaired or are all under the age of 18.

If you want any further information, call **01395 517446**.

### Help paying your council tax

You may qualify for help towards paying your council tax bill if you are on a low income or other benefits.

### Help with housing costs

You may be entitled to housing benefit to help you pay your rent if you're on a low income.

Housing benefit can pay for part or all of your rent. How much you get depends on the amount of rent you are charged, your income and circumstances.

You can apply for housing benefit whether you're unemployed or working.

If you would like any information on council tax support or housing benefit, call **01395 517446**  
email [benefits@eastdevon.gov.uk](mailto:benefits@eastdevon.gov.uk)  
or visit [www.eastdevon.gov.uk/benefits](http://www.eastdevon.gov.uk/benefits)



# Contact details



## East Devon District Council

**01395 516551**

Email: [csc@eastdevon.gov.uk](mailto:csc@eastdevon.gov.uk)

Web: [www.eastdevon.gov.uk](http://www.eastdevon.gov.uk)

Twitter: [@eastdevon](https://twitter.com/eastdevon)

Facebook: [www.facebook.com/eastdevon](http://www.facebook.com/eastdevon)

Post: East Devon District Council, Knowle, Sidmouth EX10 8HL

Open Monday to Friday 8.30am to 5pm



## Devon County Council

**0845 155 1015**

Email: [customer@devon.gov.uk](mailto:customer@devon.gov.uk)

Web: [www.devon.gov.uk](http://www.devon.gov.uk)

Twitter: [@devoncc](https://twitter.com/devoncc)

Facebook: [www.facebook.com/OfficialDevonCC](http://www.facebook.com/OfficialDevonCC)

Post: The Information Centre, Devon County Council,  
County Hall, Topsham Road, Exeter EX2 4QD



## Police and Crime Commissioner for Devon and Cornwall

**01392 225555**

Police non-emergency: **101** (Textphone 18001 101)

Email: [opcc@devonandcornwall.pnn.police.uk](mailto:opcc@devonandcornwall.pnn.police.uk)

Web: [www.devonandcornwall-pcc.gov.uk](http://www.devonandcornwall-pcc.gov.uk)

Twitter: [@DC\\_PCC](https://twitter.com/DC_PCC)

Facebook: [www.facebook.com/devonandcornwallpcc](http://www.facebook.com/devonandcornwallpcc)

Post: Endeavour House, Woodwater Park,  
Pynes Hill, Exeter EX2 5WH



## Devon & Somerset Fire & Rescue Authority

**01392 872200**

Email: [comments@dsfire.gov.uk](mailto:comments@dsfire.gov.uk)

Web: [www.dsfire.gov.uk](http://www.dsfire.gov.uk)

Twitter: [@dsfireupdates](https://twitter.com/dsfireupdates)

Facebook: [www.facebook.com/Dsfireupdates](http://www.facebook.com/Dsfireupdates)

Post: Devon & Somerset Fire & Rescue, Authority HQ,  
The Knowle, Clyst St George, Exeter EX3 0NW



Please recycle me

**This leaflet  
is available  
on request in  
large print,  
braille or  
audio.**

If English is  
not your first  
language, we can  
also arrange for it  
to be produced in  
another language.

**0845 155 1015**