

# Talaton



village plan

# Talaton Village Plan

## Index

<b>Introduction</b>	<b>1</b>
<b>Housing</b>	<b>2</b>
<b>Education</b>	<b>3</b>
<b>The Environment</b>	<b>3</b>
<b>Health &amp; Social Services</b>	<b>6</b>
<b>Retail Services</b>	<b>7</b>
<b>Sport &amp; Recreational Facilities</b>	<b>7</b>
<b>Transport &amp; Roads</b>	<b>9</b>
<b>Utility &amp; Miscellaneous Services</b>	<b>10</b>
<b>Action Plan</b>	<b>11</b>

front photograph circa 1995

Produced with the assistance of a grant from



# About the Village

The Parish of Talaton lies 12 miles east of Exeter and 6 miles west of Honiton. It is surrounded by a mixture of arable and grassland, which is owned by a variety of small and medium sized farms. It has 430 voters and a total population of around 500 people. There is a shop (community run) and post office, an ancient church, a pub, a village hall and a number of well-supported organisations. The nearest primary school is in the next village, Feniton. It is estimated that a quarter of the working population are employed within or close to the Village.

There are seven outlying settlements within the Parish:- Newtown (the largest), Lashbrook, Larkbeare, Escot, Talewater, Westcott and Rydon. The Parish occupies an area in the order of 1000 hectare (2500 acres). There are approximately 200 homes in the Parish with around half of these in or close to the village centre.

Talaton dates from a little after Domesday. The first Rector is recorded in 1285 and a small Norman 12th century church was replaced by the present church in the 15th century. In the Civil war there was a skirmish at Escot, with the Roundheads winning the day. The village was largely self sufficient and throughout the 19 century had a population of 300 to 400 people.

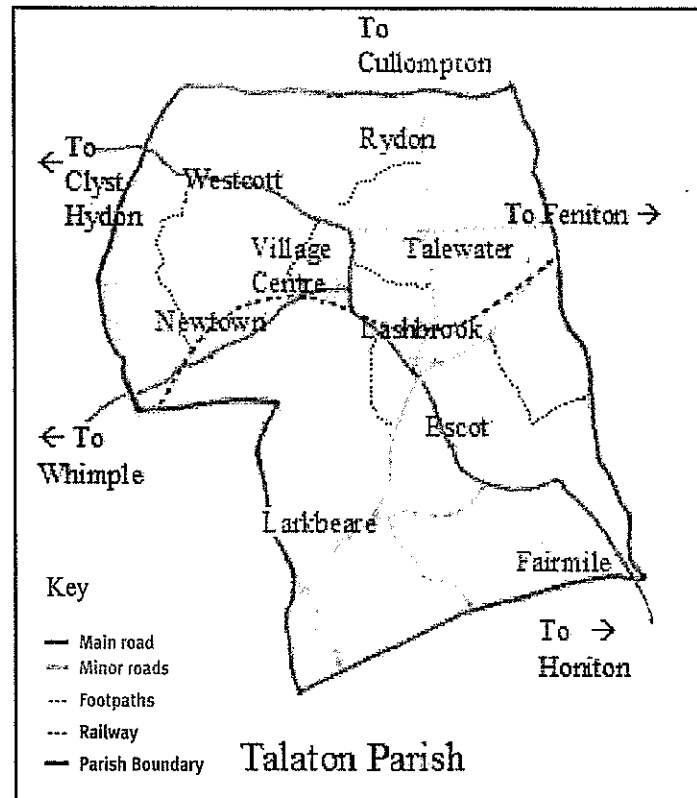
## Who produced the plan?

The Plan was produced by a Steering Group made up of representatives from the main Village organisations. The Group met on ten occasions and also carried out various parts of the work individually. The Group were as follows:

Chris Harwood .....	Parish Council
Charlie Hutchings .....	Parochial Church Council
Trish Lenehan .....	Shop Association
Martin Mitchell .....	Chairman
Dawn Newman .....	Parish Hall Committee
Dennis Oakley .....	Parish Council
Peppi Shaw .....	Produce Association
Nemo Young .....	Native Talatonian

## How the plan was produced

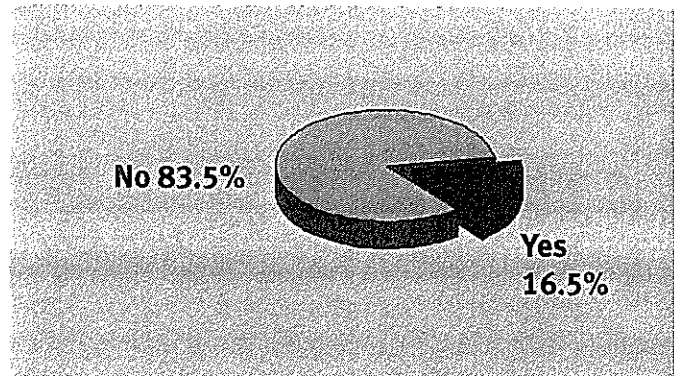
In the Autumn of last year the Parish Council commissioned the production of a village plan. A steering group was formed and funding obtained from the Countryside Agency. The Steering Group's first task was to draw up a questionnaire which was sent, personally addressed, to each voter. A group of teenagers also contributed to drawing up the questionnaire and an evening event was held for them to fill it in as individuals. The results from the questionnaire were analysed and a 20 page summary produced, a hundred copies of which were distributed on free issue through the village shop. The questionnaire was anonymous and indicated a strong interest on several issues where, if progress was to be made, people needed to come forward to take part in organising/participating in those interests. An open evening was held to identify the support for, and interest in, these issues. Throughout the eight months of preparing the Plan, monthly reports have been published in the village magazine, known as the "Talaton Calendar".



# Housing

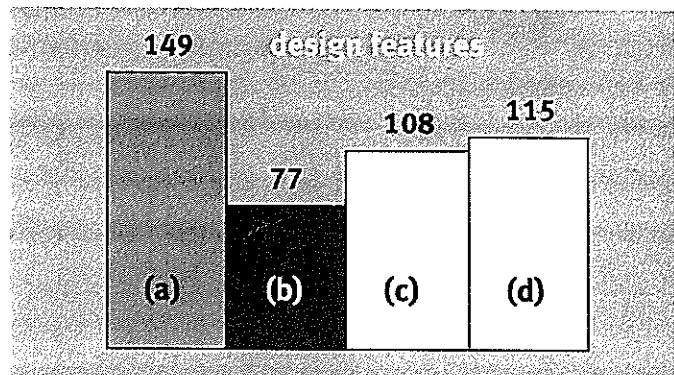
## No major development

From the questionnaire, it is apparent that the majority (83.5%) of the village does not want a major housing development (major was considered to be a development larger than 30 houses). Over half the respondents (53.5%) were against any development outside the existing built-up village centre. Accordingly the Action Plan details steps to be taken to seek to protect the village from any material development.



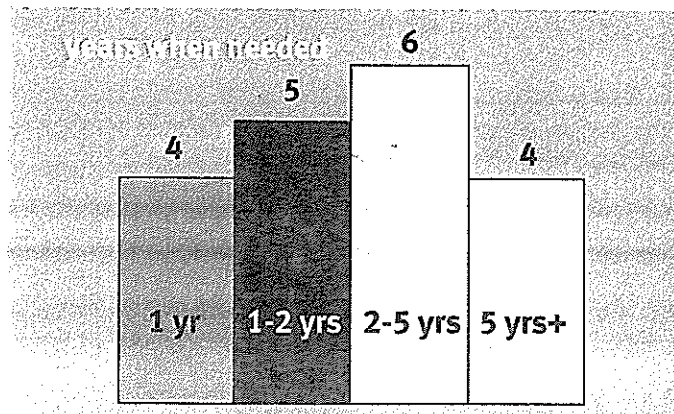
## Housing design

In responding to the questionnaire, many people commented on the design features they would like to see where building of new houses takes place (there are currently six building plots in the village). The design features most favoured were:- (a) the need to be in-keeping with surrounding properties, (b) a desire for cottage style housing, (c) a wish for sites not to be crowded or (d) not to overshadow neighbours. Some 400 comments were made and the Action Plan takes account of this high level of interest in planning the production of a "village design statement", which, when adopted by East Devon District Council, will have the force of planning rules.



## Affordable housing

Half the people who responded to the questionnaire said they would like to see more affordable housing in the village, either owned or rented. Of these, 19 said that the need was for themselves and indicated the time at which they would require the accommodation. There is clearly a forthcoming need for affordable homes but it is not clear if the demand from the Parish can be met by the existing supply of affordable housing. The Action Plan therefore takes this issue forward to prevail upon East Devon District Council to determine if the need is likely to be met and if not, in conjunction with the Parish Council, arrange for additional affordable homes in Talaton.



# Education

## Playgroup, parent & toddler group and pre-school education

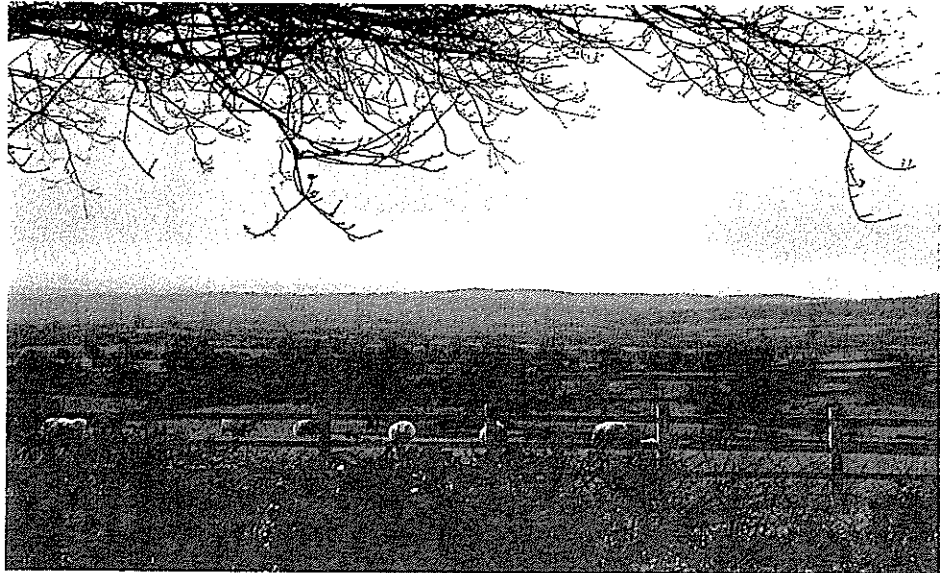
The response to the questionnaire showed that the majority of people are very satisfied with the local schools. Over a quarter of people said they would like to see a play group, or parent toddler group, or pre-school education facility. An open evening was held to develop ideas and enlist support from those with young children. Unfortunately no one volunteered support or expressed interest. It is therefore difficult to see how progress can be made and it is only proposed that the Parish Council keeps a watching brief on the subject to see if support emerges over time.



# The Environment

## General

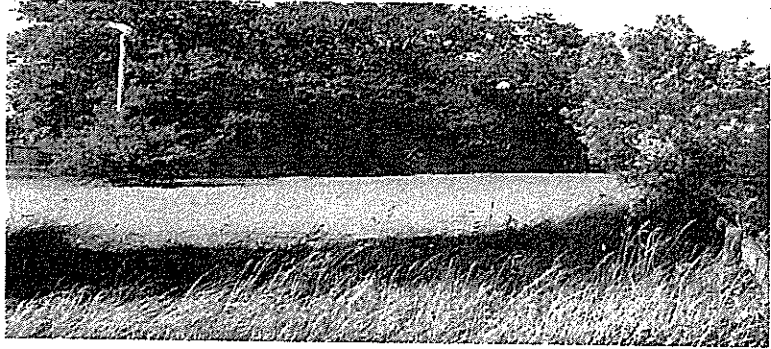
The response to the questionnaire indicated that the majority of people are very happy with the local environment. Over 60% feel that the open spaces around the village are well maintained and 78% felt that the general look of our countryside is as they would like it to be. There was however a wealth of constructive views from a significant minority.



# The Environment

## Open spaces

The Action Plan deals with continuing attention to maintain the Moor and addresses, through a reporting system, maintenance of verges and ditches. It proposes working parties to keep public places tidy.



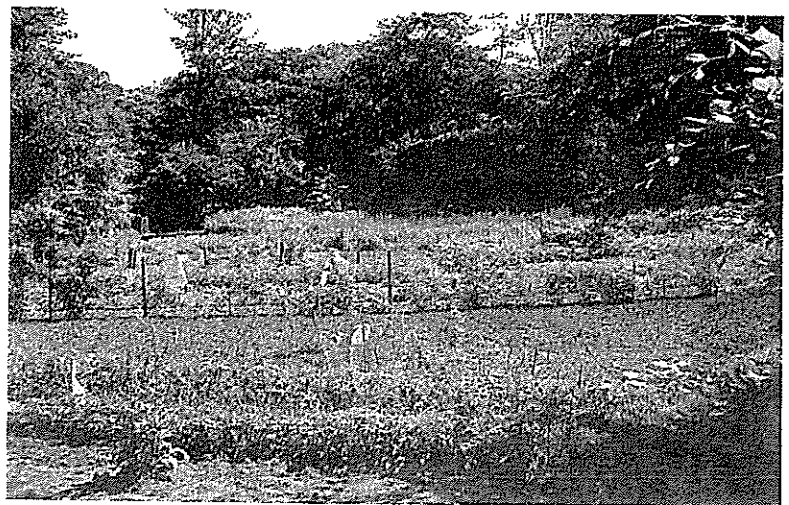
## The Countryside

In response to the question about the look of the countryside around the Parish, 42 people (15%) referred to poor hedge cutting, agricultural litter and dog fouling. The Action Plan proposes a survey to determine objectively the extent of these nuisances.



## Allotments

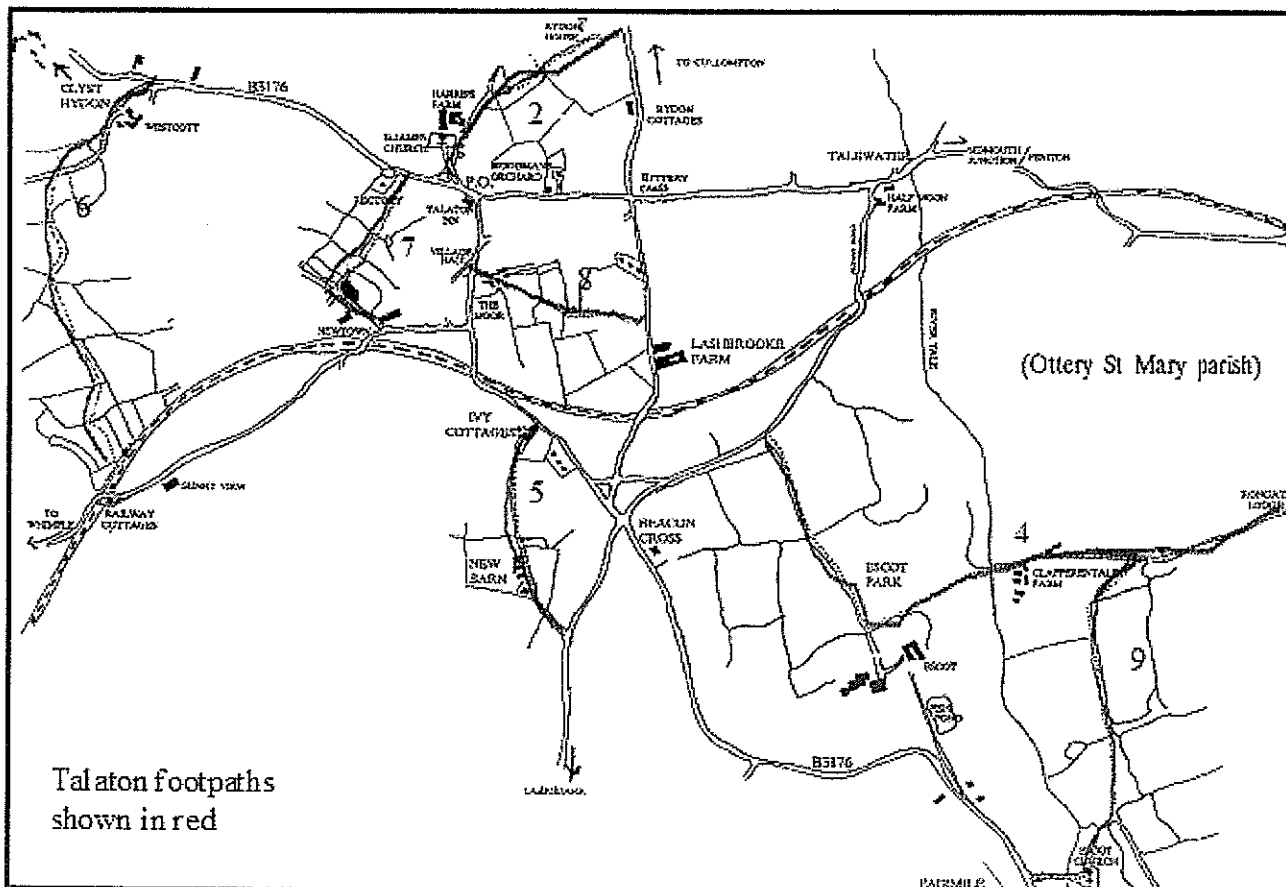
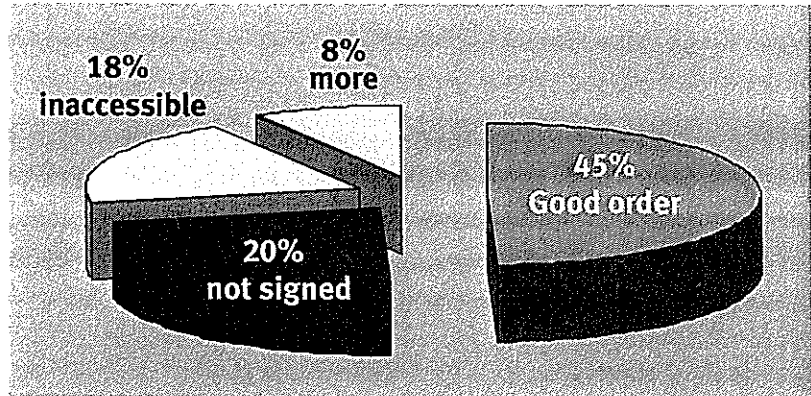
The questionnaire responses indicated that 23 people would like allotments. At an open evening, 6 people put their names forward as prospective plot holders. The Action Plan seeks to find an appropriate piece of land to be obtained by the Parish Council.



# The Environment

## Footpaths & Bridleways

From the response to the questionnaire, it is apparent that people feel the village footpaths are in good order (45%). However, 20% felt they were not adequately signed and 18% that they were inaccessible. A further 8% felt that there should be more rights of way. The Action Plan details a number of steps to achieve the objective of footpaths in the Parish being well marked and easily passable, having regard to inclement weather and agricultural operations.



## Key To Footpaths

- 2 - Church to Rydon
- 4 - Nr Rowden Covert to Escot
- 5 - Ivy Cottages to near Beacon Cross
- 6 - Nr Railway Cottages to Westcott
- 7 - Nr Old Rectory to Newtown
- 8 - Lashbrook to the Moor
- 9 - To Escot Church via footbridge from near Fairmile

(Numbers above are the official path references on the definitive map)

# The Environment

## Recycling

The response to the questionnaire shows that whilst 48% of people indicated they felt recycling facilities were adequate, 36% felt that this was not so. The prime reason given by 26% was that only part of the village enjoys a recycling collection. A further 5% wanted access to a municipal shredder and 2% wanted a periodic collection of large items. The Action Plan proposes delivery of these facilities, achieved by dialogue with East Devon District Council.



## Health & Social Services

### General

76% of people who responded to the questionnaire thought that health and social services provided to the village either good or excellent. A further 21% felt they were adequate. Only 1.5% thought they were poor. There were a number of complimentary comments about the Coleridge medical centre and Ottery St. Mary hospital. There are no proposed actions in this area.

### Services For The Elderly

From the responses to the questionnaire, 52% of people had no view about these services. A number of these commented that this was because they had no direct experience of the services. 21% indicated that they thought the services good and a further 16% that they were adequate, but 6% felt that care was poor or non-existent.

The Action Plan proposes a process of regularly informing the community of the services for the elderly which are available. It was felt that the services are actually good but that some people are unaware of what is available.





# Retail Services

## The Village Shop

In response to the questionnaire, 251 people (91%) said they thought the village shop and post office vital or important. The existing shop premises have to be vacated and in terms of a new site, people favoured a central village location as opposed to being at the Parish Hall, in a ratio of 3:1. The Action Plan proposes support for this option.

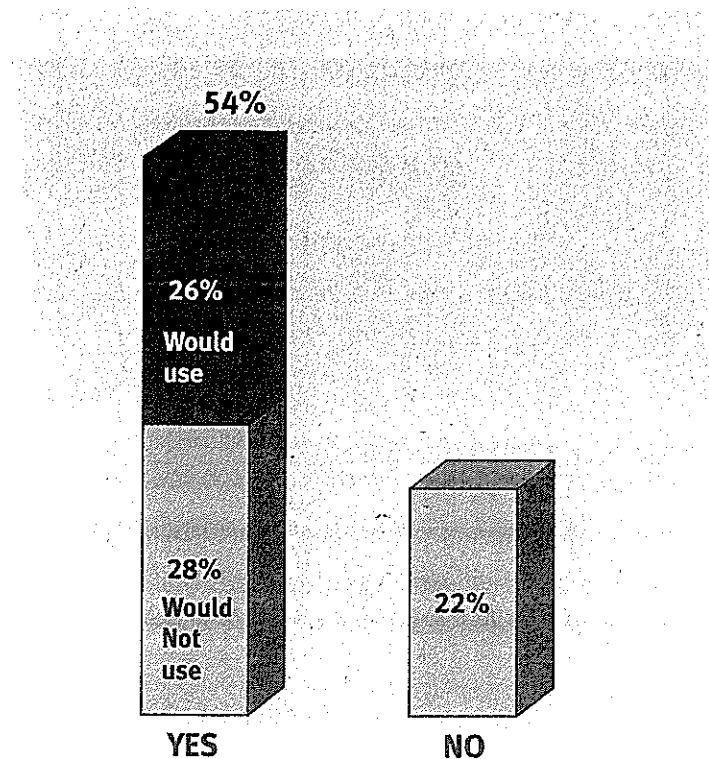


# Sport & Recreational Facilities

## A Village Playground

From the questionnaire, over half the respondents, 54%, indicated that the village needed a playground and of these, 26% said they or their family would use it. However, 22% of people said they did not want a playground.

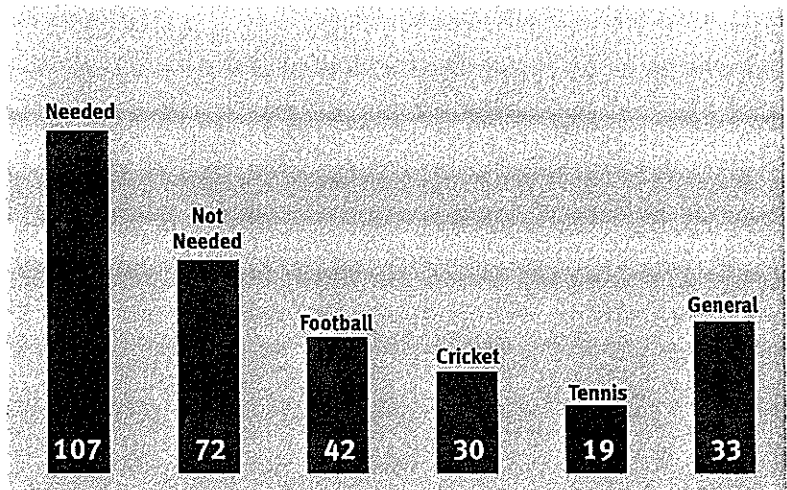
At an open evening, people were invited to volunteer to support and participate in the provision of a playground. There were no volunteers. Given the initial interest demonstrated by the questionnaire and in spite of the subsequent lack of support, it is proposed in the Action Plan that the Parish Council keeps a watching brief to identify a potential site and see if interest re-emerges.



# Sport & Recreational Facilities

## A Sports Field

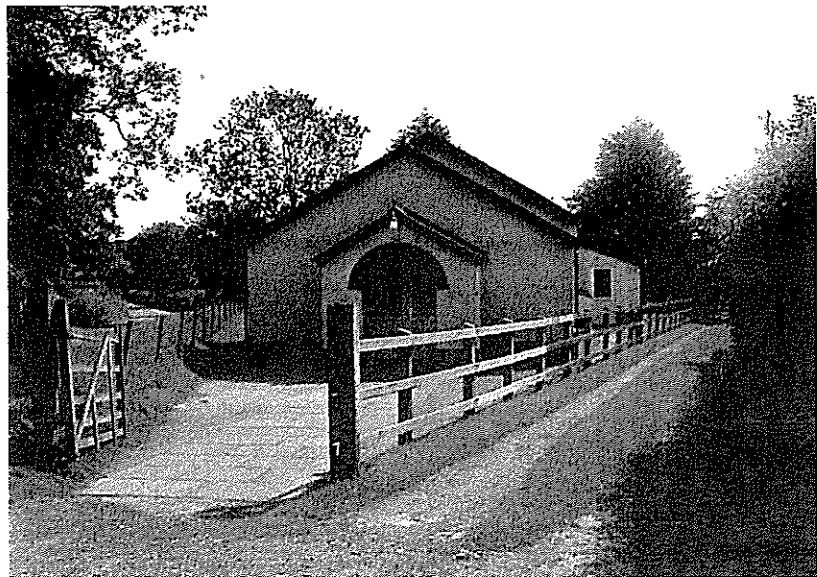
The adjacent chart shows, from the response to the questionnaire, the strong interest in a sports field. However, at an open evening no-one volunteered to participate in creating a field or take part in particular sporting activities. Once again the Action Plan proposes that the Parish Council maintains a watching brief to see if interest re-emerges.



## The Parish Hall

Over 90% of people felt that a village hall is either vital or important and in a ratio of 2 to 1, thought the Parish Hall should be renovated rather than replaced.

At an open evening, people were given an opportunity to express their preferences for various refurbishment projects which the Hall Committee is considering. It is reassuring that the priorities expressed closely mirror those identified by the Committee. The Action Plan reflects these views. The projects proposed are:



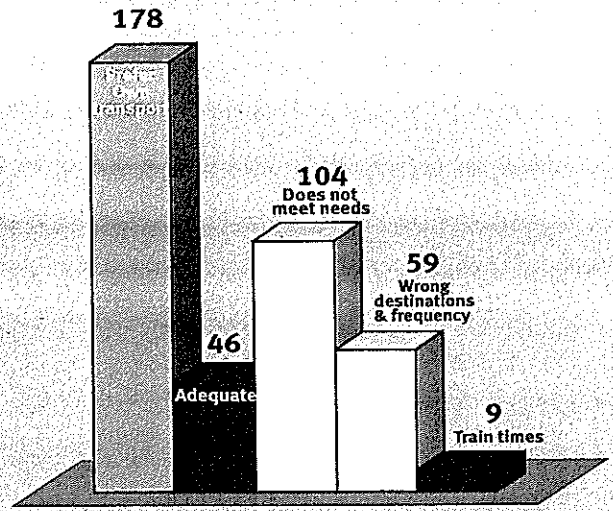
- Installation of central heating
- New club room at rear (including cyber café)
- Renovate ceiling
- Modernise kitchen
- Renovate stage and install wings / lighting for normal use
- Install stage sound and lighting system
- Remove bank to create more parking (keeping entrance to the Moor clear)
- External security lighting
- External decoration

# Transport & Roads

## Bus Services

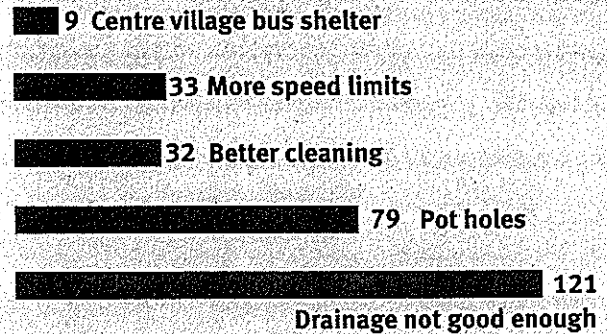
The adjacent chart shows the extent to which people feel that bus services meet or do not meet their needs. It also shows that a considerable proportion of the population simply prefers to travel using their own transport.

These results indicate that more detail needs to be gathered before firm proposals can be made to provide enhanced public transport. The Action Plan proposes professional help funded by a readily obtainable grant, any residue of which may be used to fund services.



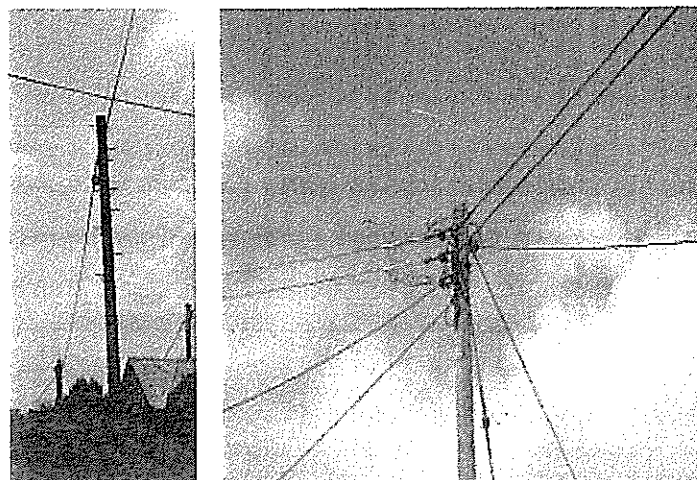
## Roads

The adjacent chart shows people's views on the adequacy of road maintenance and suggestions for improvements. The Action Plan proposes how each suggestion should be addressed.



## Overhead Cables

The questionnaire asked for people's views on more pavements, the introduction of street lighting, reduction of overhead cables and reduced speed limits. The issue of overheads cables was the only clear indication that people want change. The Action Plan proposes how improvements might be made.



# Utility & Miscellaneous Services

The table below shows how people rated the utility and other services supplied to the village. The Action Plan proposes these results be communicated to the providers of the services.

	Good	Adequate	Poor
(a) Telephone Systems	130 (48%)	105 (39%)	17 (6%)
(b) Water	109 (40%)	118 (43%)	29 (11%)
(c) Sewage disposal	99 (36%)	97 (36%)	12 (5%)
(d) Electricity	146 (54%)	98 (36%)	14 (5%)
(e) Refuse collection	163 (60%)	95 (35%)	4 (2%)
(f) Recycling collection	79 (29%)	76 (28%)	87 (32%)
(g) Postal services	158 (58%)	75 (28%)	18 (7%)
(h) Mobile library	55 (20%)	47 (17%)	6 (2%)
(i) The work of the Parish Council	60 (22%)	96 (35%)	32 (12%)
(j) Emergency services	90 (34%)	85 (31%)	2 (1%)



# Action Plan

Issue	End Objective	Action	By Whom	Time
<b>Housing</b>				
<b>1</b> Extension of village development boundary, now known as built-up boundary, not supported by 83.5% of the village	No urbanisation. No extension of the boundary. Small scale infill only (There are six building plots available at the moment)	Meet with EDDC Officers and determine best way of achieving objective	PC EDDC	Now
<b>2</b> Provision of affordable Housing, 50% of people would like to see more affordable housing	The provision of sufficient affordable housing (both shared equity and rented) as to meet demand from parishioners	Discuss with EDDC Officers to determine if need can be met from existing stock. If not, pursue provision	PC EDDC	One to five years
<b>3</b> Design features of new housing	New housing to: a) be in-keeping with surrounding property b) be of cottage style design where appropriate c) not crowd a site d) not overshadow neighbouring properties in height or position	Determine a Village Design Statement and seek adoption as Supplementary Planning Guidance	PC EDDC	Six months

## Education

<b>4</b> Provision of: A parent and toddler group (25% want) A playgroup (28%) Pre-school (30%)	The provision of all these facilities within the village, preferably in the Parish Hall	A public meeting was held to determine if there were volunteers to develop the ideas. No-one attending showed an interest in these groups. A watching brief will be maintained to see if interest emerges	Parish Hall Committee PC DCC	Ongoing
--	---	---	------------------------------------	---------

## The Environment

<b>5</b> Maintenance of the Moor	To continue to maintain the "Moor" as an attractive open space	The Moor has recently had remedial work to level it and improve drainage. Consideration should now be given to regular contracted grass cutting	PC DCC	Now
<b>6</b> Maintenance of Verges and Ditches	Verges and Ditches be well maintained avoiding untidiness, safety problems and flooding	A reporting system to be instituted to inform the PC of the precise location and nature of problems as and when they occur	Parishioners PC Landowners DCC	Six months
<b>7</b> Open Spaces generally	Open spaces in the Parish be well maintained, clear of rubbish and be of a generally attractive and welcoming appearance	Organise working parties to tidy public areas backed up by Council-provided transport. Encourage the reporting of fly tipping	Parishioners PC EDDC DCC	One year

KEY TO ABBREVIATIONS: EDDC East Devon District Council PC Talaton Parish Council DCC Devon Country Council LSG Local Service Group

# Action Plan

Issue	End Objective	Action	By Whom	Time
<b>The Environment (cont)</b>				
<b>8</b> The easy availability and usability of footpaths	Footpaths in the Parish to be well marked and passable with ease, having regard to normal agricultural operations and the effects of inclement weather	The Parish Footpath Partnership be investigated with a view to more dedicated maintenance. Notice board laminated copy of definitive map. Reissue via shop of updated leaflet showing paths. Consider diversion of path from the Moor to Lashbrook	PC DCC Talatón Shop	One year
<b>9</b> Unpopular aspects of our countryside, notably dog fouling, poor hedge cutting and agricultural litter	To minimise the extent of these nuisances	Carry out survey of surrounding areas to ascertain the true extent of these problems	PC	One year
<b>10</b> The provision of good recycling facilities	Kerb-side recycling for the whole Parish. Periodic provision of a local skip for disposal of large items	Investigative meetings as to the economics and logistics of achieving the objectives, followed by implementation	PC EDDC	One year
<b>11</b> Allotments	The provision of allotments for all Parishioners who would like one	Find appropriate plot of land to purchase or lease	PC Landowner	One year

## Health & Social Services

<b>12</b> Services for the elderly	All elderly people in the Parish should be able to easily contact appropriate provider and receive any health and social services required	Periodic notice in the Calendar giving details and phone numbers of who to contact, including CARE direct. Brochures and leaflets to be held by the shop	Editor of the Calendar. Talatón shop PC	Six months
------------------------------------	--	--	---	------------

## Retail Services

<b>13</b> Continuation of the Community run Shop and Post Office	A secure future for a central village shop and post office.	Achieve widespread support for the proposed new shop in the proposed central village location by the old petrol pumps	Parishioners The Shop Customers PC EDCC The Landowner	Ongoing to 2 years
--	---	---	--	--------------------

KEY TO ABBREVIATIONS: EDDC East Devon District Council PC Talatón Parish Council DCC Devon Country Council LSG Local Service Group

# Action Plan

Issue	End Objective	Action	By Whom	Time
<b>Sport &amp; Recreational Facilities</b>				
<b>14</b> Village Playground	The establishment and maintenance of a children's playground with swings etc	Identify site. Maintain watching brief	PC	Ongoing
<b>15</b> Sports field	The establishment of a playing field for cricket / football etc	Identify a potential site. Maintain watching brief	PC Parishioners	Ongoing
<b>16</b> Village Hall	A refurbished, attractive and up to date Hall which is regularly used for a wide range of village activities and lettings	Determine a complete list of refurbishment projects and costs. Commence work, and publicise	Parish Hall Committee	Ongoing
<b>Transport &amp; Roads</b>				
<b>17</b> Bus Service	A public transport service, to and from the village, which meets the needs of the community	Obtain grant for an independent Travel Consultant and further grant to fund improved transport services	PC	One year
<b>18</b> Roads	A road network in and around the Parish which is well maintained and copes with adverse weather conditions	a) Flooding. Identify sites, investigate cause and report b) Gritting. Identify problem locations and request action c) Pot hole reporting to 01392 682100 d) Speed Restrictions. Identify locations and report e) On road Parking. Identify locations, ask owners to find safer location	PC, DCC, LSG & Landowners PC, DCC, LSG LSG, DCC PC, DCC, Police PC, DCC, Police	Ongoing
<b>19</b> Overhead cables	Significant reduction in overhead cables	Hold meetings with Power and Telecommunications companies. Explore planning permission issues	PC EDDC	3 years
<b>Utility &amp; Miscellaneous Services</b>				
<b>20</b> Performance of Utilities	Improved services	Communicate performance results ex questionnaire	PC	3 months

KEY TO ABBREVIATIONS: EDDC East Devon District Council PC Talaton Parish Council DCC Devon Country Council LSG Local Service Group

Digitally Printed by FDS Graphics • Exeter 01392 203320  
Finishing by Larkbeare Services Ltd • Talaton 01404 850833

Copyright © 2003 Talaton Parish Council