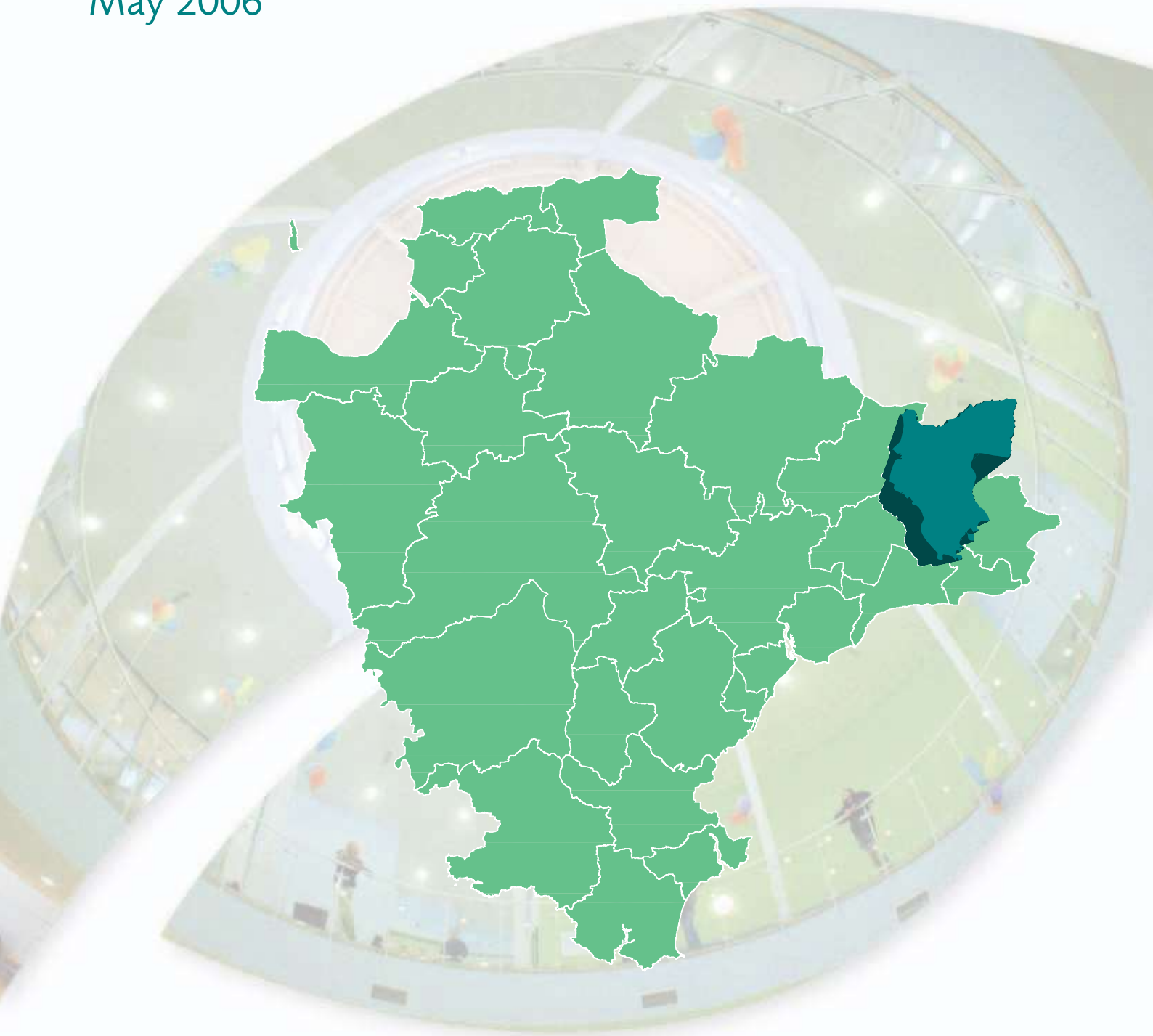


Honiton

Devon Town Baseline Profile

May 2006

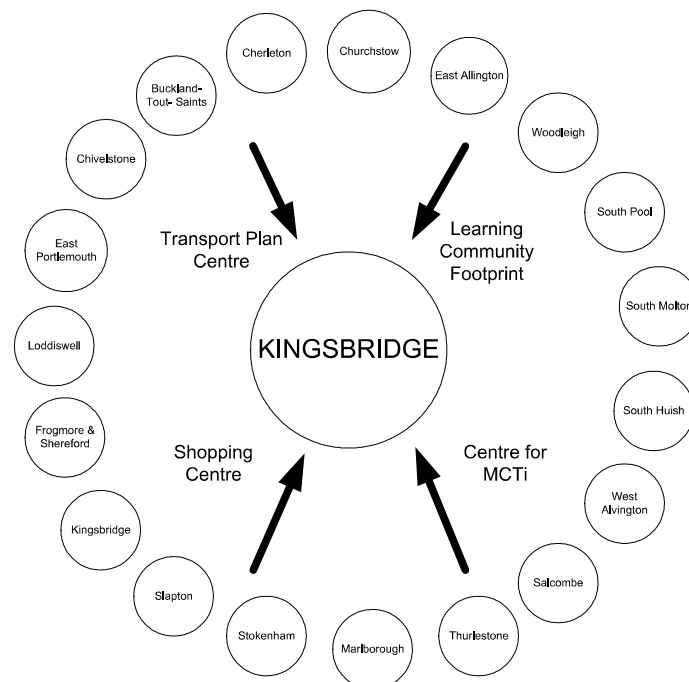


Identifying Devon Towns

The main factor that decides a town's hinterland is provision of services; the place that the hinterland looks to in order to provide the things it needs to survive. In order to identify the 28 Devon Towns, analysis of the following services and other relevant factors have been taken into account:

- Local Travel Plans – which are based on public consultation and map local travel patterns, the majority of which are short ones in and around local communities as part of people's daily lives.
- Shopping catchment areas – which are the service most frequently accessed by people.
- Learning Community catchment areas – which have a major influence on where people look to for services. Learning Community catchments do not always follow district or even county boundaries, but are based on a collection of feeder primary schools.
- Market and Coastal Towns Initiative areas - The Market and Coastal Towns Initiative was started after recognition that the health of a market town is vital to the well being of its hinterland, and that many of Devon's market towns were in need of regeneration. It is a Central Government initiative, administered by the RDAs. Over half of Devon is included in the Market and Coastal Towns Initiative.
- Parishes - The boundary definitions are shown in terms of parishes, as they are traditionally the smallest area used for 'clustering'.

The diagram below is an illustration of how this works for one Devon Town: Kingsbridge.



Exeter also provides a similar or related "market town" function as well as being a sub regional centre with a larger sphere of influence.

Foreword

In Devon, we want a county for everyone.

We want all to share in our economic prosperity, to have access to the best possible public services and to enjoy a good quality of life.

Our county is made up of many small and scattered communities built around larger market and coastal towns and the vibrant city of Exeter.

To make sure that the County Council and other agencies provide a good service to all these diverse communities and can meet their future needs, we need to fully understand and take into account the local situation and any local issues.

We call this initiative “Connecting with Communities” and it is a key part of our Strategic Plan for the future of Devon.

To help, we have produced a local profile of each of the key market and coastal towns in Devon and their surrounding area.

Based on key facts and figures, these profiles are just a starting point for local discussion about the real needs and priorities of each of our communities.

I hope you find this information useful and that it proves an invaluable resource in all future local planning.

Councillor Des Hannon
Executive Support Member for Improvement and Customer Service
Devon County Council



Introduction

This profile, one of 29 covering the area of Devon County Council, has been generated by the County Council's Corporate Information Service and is an important resource contribution to local community planning work.

Each profile provides a statistical overview, based on a series of facts and figures, of what life is like in each "Devon town" area. The profile contains a baseline of information and is intended to provide the basis for further discussion and development within the County Council and with partners.

In light of these discussions the profile can grow into a more rounded picture describing "how things are" for each area, as well as to set out the likely future actions that will be needed to redress any gaps in service or unmet needs.

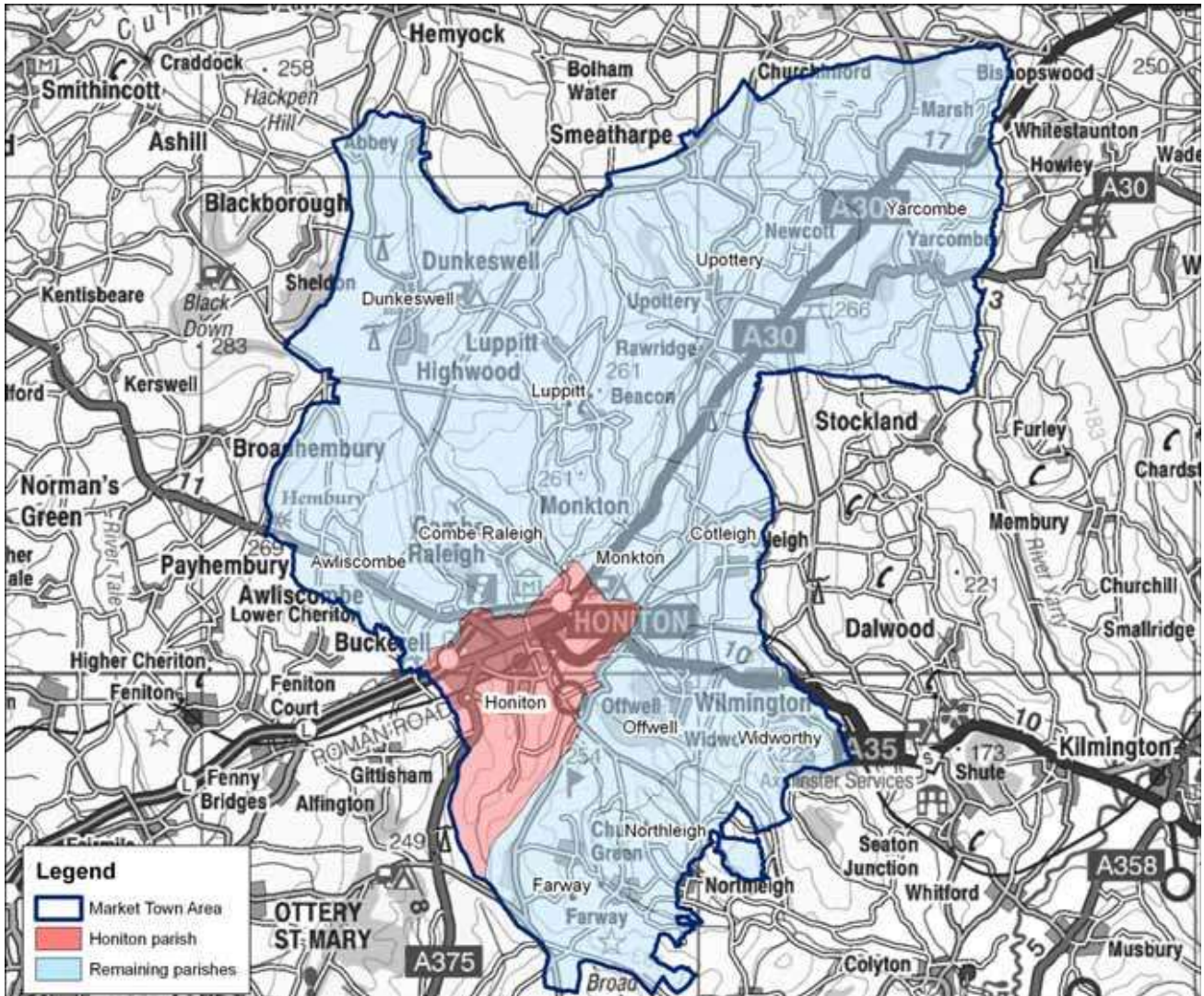
The profile is structured around a series of themes to cover social, economic and environmental well being. This is a starting point in producing profiles about our "Devon town" areas in which considerable effort has been made to provide a comprehensive series of data. Further data will be added to subsequent editions as they become available to provide a more complete picture and monitor trends.

The profiles are available on the County Council website – www.devon.gov.uk/devontownprofiles

Area definition

Market town areas have been defined as aggregations of parishes. The following 13 parishes make up the Honiton market town area:

| | | | | |
|------------|---------------|----------|------------|---------|
| Awliscombe | Combe Raleigh | Cotleigh | Dunkeswell | Farway |
| Honiton | Luppitt | Monkton | Northleigh | Offwell |
| Upottery | Widworthy | Yarcombe | | |



Crown Copyright. All rights reserved. Devon County Council. 100019783 2006

As much of the data included in this profile is produced at a ward level, a ‘best-fit’ of wards is also used. Wards are included in one market town area if more than 60% of the population of that ward live within the market town boundary. If between 40% and 60% of a ward’s population falls within a market town area it will be included, but may also be included in another area.

The wards that comprise the market town area in this profile are as follows:

| | | | |
|------------|---------------------|------------------|-----------|
| Dunkeswell | Honiton St Michaels | Honiton St Pauls | Otterhead |
|------------|---------------------|------------------|-----------|

Two wards fall completely inside the market town boundary. With over 90% of the population of Dunkeswell ward and 70% of Otterhead ward living inside the boundary these wards are also included in the ‘best-fit’ for the purposes of this profile. The wards of Coly Valley (25% of the ward population in the area), Tale Vale (21%) and Yarty (21%) are not included.

Each market town area is comprised of a centre (coloured red) and its surrounding hinterland (referred to as the “Remaining parishes” throughout this document). The centre for this profile is considered to be the parish of Honiton, or the two wards of Honiton St Michaels and Honiton St Lawrence if appropriate.

Some national datasets are released using a new geographic hierarchy – Super Output Areas. The lowest level – Lower Super Output Areas (or LSOAs) – is about one third the size of a ward. These are aggregated to form Middle Super Output Areas (MSOAs). Where data are only available at Super Output Area a best-fit approach

has been adopted. There are 13 LSOAs that fall either fully or partially inside the market town area, eight of which form Honiton parish. There are four MSOAs in the market town area, two of which form Honiton parish. A further two provide a best fit for the remaining parishes.

Additional information has been included to provide some comparisons. All tables have data for the East Devon district and the area administered by Devon County Council – where reference is made to the county of Devon this refers to the area covered by Devon County Council, which does not include Plymouth or Torbay. Where possible data are also included at a national level, either for England or England & Wales.

Contents

| | |
|---|----|
| Population | 8 |
| Percentage of population by age band (2004) | 8 |
| Population change (1991 to 2004) | 8 |
| Ethnicity (2001) | 9 |
| Household composition (2001) | 9 |
| Deprivation | 10 |
| Comparison of IMD 2000 and ID 2004 | 10 |
| Map of Index of Deprivation 2004 | 11 |
| The Local Economy | 12 |
| Unemployment as a proportion of working age resident population (April 2005) | 12 |
| Economic activity (2001) | 13 |
| Income Support and Job Seekers Allowance claim rates (2004) | 13 |
| Employment of people living in the area by industry (2001) | 15 |
| Percentage of businesses in profile area by Standard Industrial Classification (2004) | 16 |
| Skills and Learning | 17 |
| Number and percentage of pupils achieving at least Key Stage 2 Level 4 (2004) | 17 |
| GCSE attainment (2002/03) | 17 |
| Highest level of qualification (2001) | 18 |
| Health, Care and Wellbeing | 19 |
| Incapacity Benefit & Severe Disablement Allowance and Disability Living Allowance claimant rates (2004) | 19 |
| Percentage of people living with a limiting long-term illness (2001) | 20 |
| General health (2001) | 20 |
| Older People | 21 |
| Percentage of lone pensioner households (2001) | 21 |
| Number of Social Services clients per 1,000 population (2004) | 21 |
| Children and Young People | 22 |
| Children in need aged 0 to 17 years per 1,000 population aged 0 to 17 years (2003/04) | 22 |
| Young offenders aged 10 to 17 years per 1,000 population aged 10 to 17 years (2000 to 2002) | 22 |
| Community Safety | 23 |
| Total crime per 1,000 population (2004/05) | 23 |
| Vehicle crime per 1,000 population (2004/05) | 23 |
| Violent crime per 1,000 population (2004/05) | 24 |
| Drug offences per 1,000 population (2004/05) | 25 |
| Dwelling burglaries per 1,000 population (2004/05) | 25 |
| Housing | 26 |
| House price change (2001 to 2005) | 26 |
| Average house price (2004) | 26 |
| Percentage of dwellings by tenure (2001) | 27 |
| Transport | 28 |
| Car ownership (2001) | 28 |
| Mode of travel to work (2001) | 28 |
| Accessibility by public transport (2005) | 29 |
| The Environment – Landscape | 30 |
| Landscape character | 30 |
| Landscape Character Zones within the market town area | 31 |
| The Environment – Wildlife and Geology | 32 |
| Key sites | 32 |
| Key sites within the market town area | 33 |

This profile makes use of data from the 1991 and 2001 Censuses. All such data is acknowledged as Crown Copyright.

Population

Summary

The structure of the population in the market town area is broadly similar to that across the district and the county. There is a slightly higher proportion of the younger working age (25-44) in Honiton parish and in the rural area there is a slightly higher proportion of the older working age group (45-64).

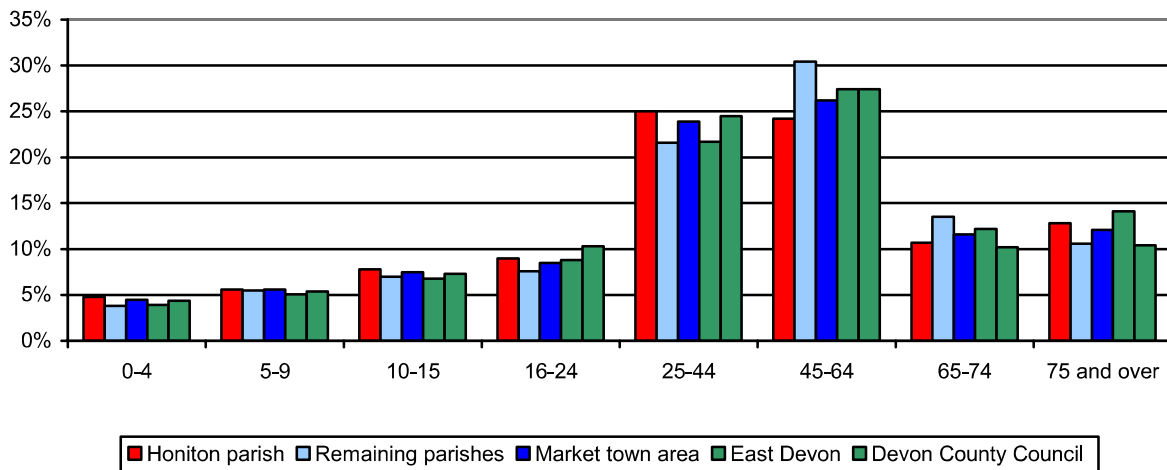
There has been significant population growth since 1991 in the area with Honiton parish growing by more than a quarter.

The proportion of people from minority ethnic groups in the market town area is slightly lower than the district and county averages.

The level of households occupied by individuals in the market town area as a whole is similar to the district and county averages. The surrounding hinterland has a noticeably lower percentage than Honiton parish.

Percentage of population by age band (2004)

| Area | Total population | Age band | | | | | | | |
|----------------------|------------------|----------|------|-------|-------|-------|-------|-------|-------------|
| | | 0-4 | 5-9 | 10-15 | 16-24 | 25-44 | 45-64 | 65-74 | 75 and over |
| Honiton parish | 11,471 | 4.8% | 5.6% | 7.8% | 9.0% | 25.0% | 24.2% | 10.7% | 12.8% |
| Remaining parishes | 5,465 | 3.8% | 5.5% | 7.0% | 7.6% | 21.6% | 30.4% | 13.5% | 10.6% |
| Market town area | 16,936 | 4.5% | 5.6% | 7.5% | 8.5% | 23.9% | 26.2% | 11.6% | 12.1% |
| East Devon | 132,548 | 3.9% | 5.1% | 6.8% | 8.8% | 21.7% | 27.4% | 12.2% | 14.1% |
| Devon County Council | 742,911 | 4.4% | 5.4% | 7.3% | 10.3% | 24.5% | 27.4% | 10.2% | 10.4% |



Source: South Devon Health Informatics Service (FHSA data)

Population change (1991 to 2004)

| Area | 1991 | 2001 | 2004 | % change 1991 to 2004 |
|----------------------|---------|---------|---------|-----------------------|
| Honiton parish | 8,988 | 10,858 | 11,471 | 27.6% |
| Remaining parishes | 4,531 | 5,441 | 5,465 | 20.6% |
| Market town area | 13,519 | 16,299 | 16,936 | 25.3% |
| East Devon | 115,873 | 125,520 | 132,548 | 14.4% |
| Devon County Council | 646,903 | 704,493 | 742,911 | 14.8% |

Source: 1991 and 2001 Census, 2004 South Devon Health Informatics Service (FHSA data)

Ethnicity (2001)

| Area | Ethnic Group | | | | |
|----------------------|--------------|------------|---------|---------------------------|-----------------------------|
| | All People | White | % White | Black and minority ethnic | % Black and minority ethnic |
| Honiton parish | 10,858 | 10,749 | 99.0% | 109 | 1.0% |
| Remaining parishes | 5,441 | 5,417 | 99.6% | 24 | 0.4% |
| Market town area | 16,299 | 16,166 | 99.2% | 133 | 0.8% |
| East Devon | 125,520 | 124,594 | 99.3% | 926 | 0.7% |
| Devon County Council | 704,493 | 696,590 | 98.9% | 7,903 | 1.1% |
| England | 49,138,831 | 44,679,361 | 90.9% | 4,459,470 | 9.1% |

Source: 2001 Census

Household composition (2001)

| Area | All households | Single person households | | Households comprising more than one person | |
|----------------------|----------------|--------------------------|-------|--|-------|
| | | Number | % | Number | % |
| Honiton parish | 4,812 | 1,435 | 29.8% | 3,377 | 70.2% |
| Remaining parishes | 2,243 | 489 | 21.8% | 1,754 | 78.2% |
| Market town area | 7,055 | 1,924 | 27.3% | 5,131 | 72.7% |
| East Devon | 55,011 | 16,334 | 29.7% | 38,677 | 70.3% |
| Devon County Council | 298,574 | 86,890 | 29.1% | 211,684 | 70.9% |
| England | 20,451,427 | 6,150,264 | 30.1% | 14,301,163 | 69.9% |

Source: 2001 Census

Deprivation

Summary

No Lower Super Output Areas (LSOA) are ranked in the most deprived 25% nationally, with five LSOAs ranked in the next 25% most deprived, seven are in the 50-75% and one in the 75-100% category.

The principal source of deprivation data is currently The Indices of Deprivation 2004. This is a Lower Super Output Area (LSOA) level measure of multiple deprivation and is made up of seven domains. A LSOA is an area of about 1,500 people and has been devised to standardise statistical geography across the country. The seven domains are:

- Income Deprivation
- Employment Deprivation
- Health Deprivation and Disability
- Education, Skills and Training Deprivation
- Barriers to Housing and Services
- Living Environment Deprivation
- Crime

There are two supplementary Indices (Income Deprivation Affecting Children and Income Deprivation Affecting Older People).

The model which underpins the Index of Deprivation 2004 is based on the idea of distinct dimensions of deprivation which can be recognised and measured separately. These are experienced by individuals living in an area. Where possible, the indicators relate to 2001.

The information will help target policies and funding, reinforcing the Government's drive to improve the quality of life in disadvantaged communities.

There are over 32,000 LSOAs in the 2004 index, replacing the 8,500 wards used to construct the Index of Multiple Deprivation 2000. The LSOA boundaries were determined nationally with no local input.

The 2004 index was developed from academic research undertaken by Oxford University.

The table below compares the areas in Devon ranked in the most deprived 25% nationally, in terms of the number of wards in 2000 and the number of LSOAs in 2004, together with the population of these areas.

Comparison of IMD 2000 and ID 2004

| Area | IMD 2000 | | ID 2004 | |
|----------------------|-----------------|------------|-----------------|------------|
| | Number of wards | Population | Number of LSOAs | Population |
| East Devon | 1 | 3,901 | 0 | 0 |
| Exeter | 3 | 17,070 | 14 | 22,057 |
| Mid Devon | 0 | 0 | 1 | 1,652 |
| North Devon | 6 | 21,409 | 10 | 14,158 |
| South Hams | 1 | 5,458 | 0 | 0 |
| Teignbridge | 6 | 24,408 | 6 | 8,918 |
| Torridge | 10 | 22,217 | 3 | 5,731 |
| West Devon | 1 | 1,483 | 0 | 0 |
| Devon County Council | 28 | 95,946 | 34 | 52,516 |

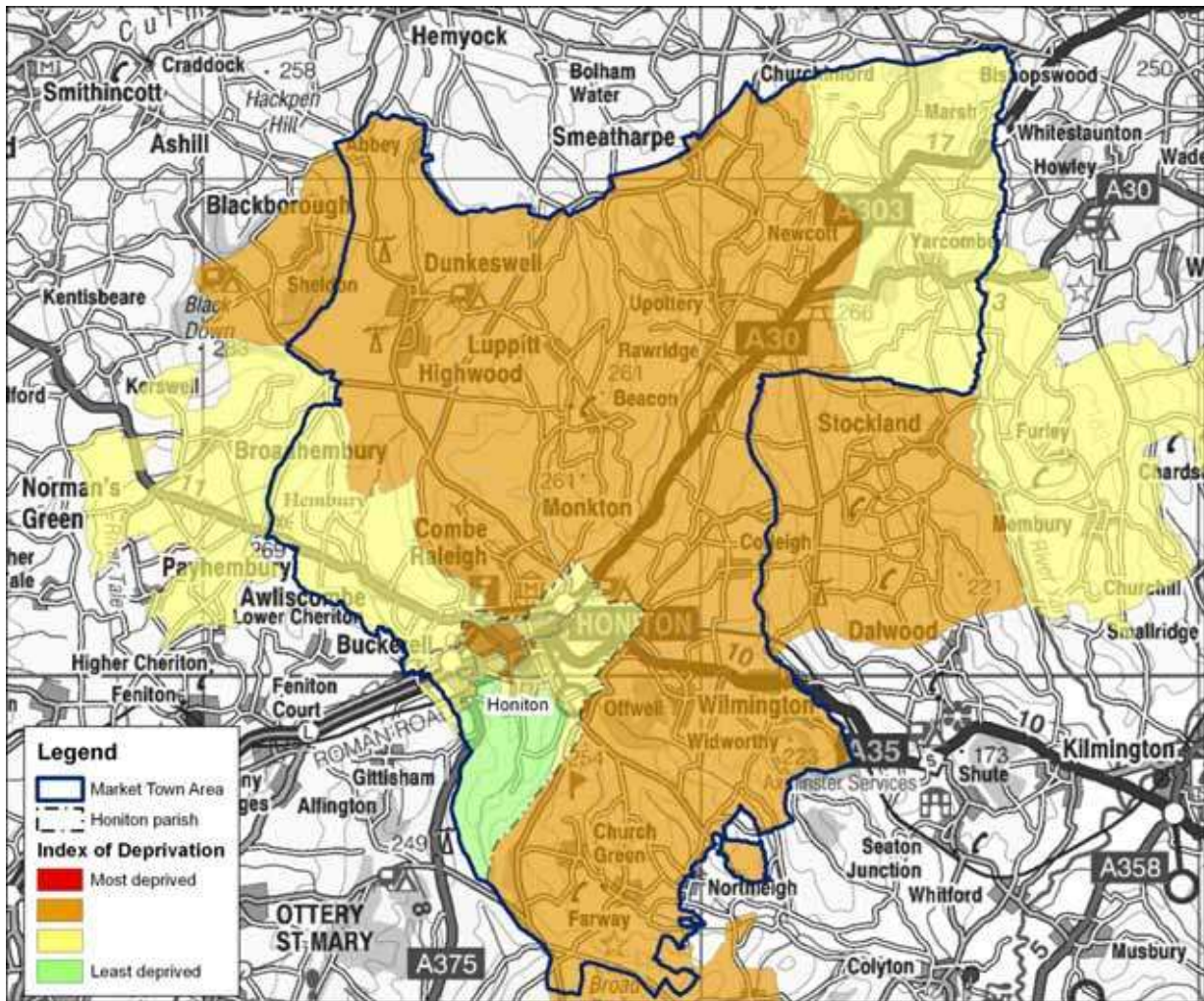
Source: Office of the Deputy Prime Minister and South Devon Health Informatics Service (FHSA data)

Application of the new index reduces the population in Devon perceived to be living in the most deprived areas by around 45%. This is probably due to the addition of crime and the living environment to the index, which in both cases the area covered by Devon County Council would have scored well compared to the national average. The reduced weighting given to the access to services domain may also be a contributing factor.

There are 13 LSOAs that fall either completely or partially within the area covered by this profile. None of these is classified as being in the most deprived 25% of LSOAs nationally. Five LSOAs fall into the next 25% - two of these are located in Honiton parish. A further seven LSOAs fall into the 50-75% (five in Honiton) most deprived

areas and the remaining LSOA (in Honiton parish) is classified as being in the least deprived 25% of LSOAs nationally.

Map of Index of Deprivation 2004



Crown Copyright. All rights reserved. Devon County Council. 100019783 2006

Source: Office of the Deputy Prime Minister

The Local Economy

Summary

Unemployment levels in the Honiton parish are above the district and county averages.

Economic activity rates as a whole within the market town area are consistent with the county and national averages. However, self-employment levels in the surrounding hinterland are significantly higher than the county and national averages and may well reflect those involved in farming.

Claim rates for Income Support in Honiton parish are higher than the district figure but about the same as the county figure.

Claim rates for Job Seekers Allowance show a similar pattern but the Honiton figure is slightly above the county figure.

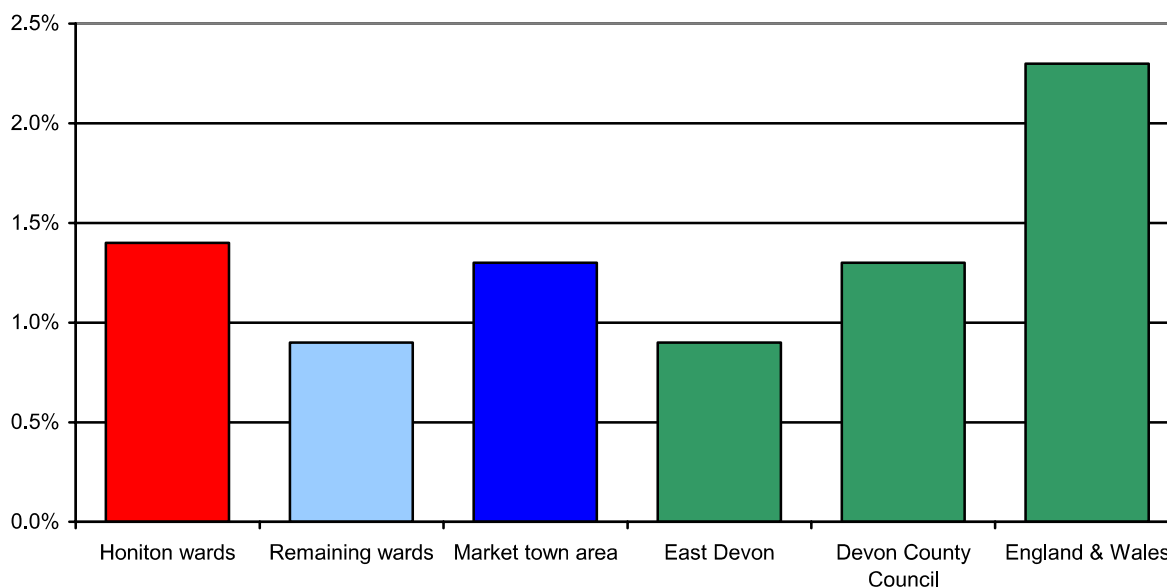
The number of households with an annual income of less than £20,000 is broadly similar to the district and county averages.

The percentage of employment by industry sector of those living in the market town area highlights the main sectors of employment is wholesale & retail trade, manufacturing and health & social work. This represents more than 40% of employment in the market town area.

The largest number of businesses in the market town area is in the wholesale & retail trade with over 25% of businesses involved.

Unemployment as a proportion of working age resident population (April 2005)

| Area | Number unemployed | % working age population |
|----------------------|-------------------|--------------------------|
| Honiton parish | 86 | 1.4% |
| Remaining parishes | 20 | 0.9% |
| Market town area | 106 | 1.3% |
| East Devon | 655 | 0.9% |
| Devon County Council | 5,445 | 1.3% |
| England & Wales | 752,758 | 2.3% |



Source: Office for National Statistics

Economic activity (2001)

| Area | People aged 16 to 74 | Total economically active | Economically active | Employed part-time | Employed full-time | Self-employed | Unemployed | Students |
|----------------------|----------------------|---------------------------|---------------------|--------------------|--------------------|---------------|------------|----------|
| Honiton parish | 7,429 | 4,858 | 65.4% | 23.0% | 56.5% | 13.9% | 3.9% | 2.7% |
| Remaining parishes | 3,947 | 2,451 | 62.1% | 16.2% | 41.3% | 36.4% | 3.3% | 2.7% |
| Market town area | 11,376 | 7,309 | 64.2% | 20.7% | 51.4% | 21.4% | 3.7% | 2.7% |
| East Devon | 87,125 | 54,476 | 62.5% | 21.0% | 51.8% | 20.5% | 3.2% | 3.6% |
| Devon County Council | 503,212 | 328,379 | 65.3% | 20.5% | 52.6% | 19.3% | 3.9% | 3.6% |
| England | 35,532,091 | 23,756,707 | 66.9% | 17.7% | 61.0% | 12.4% | 5.0% | 3.9% |

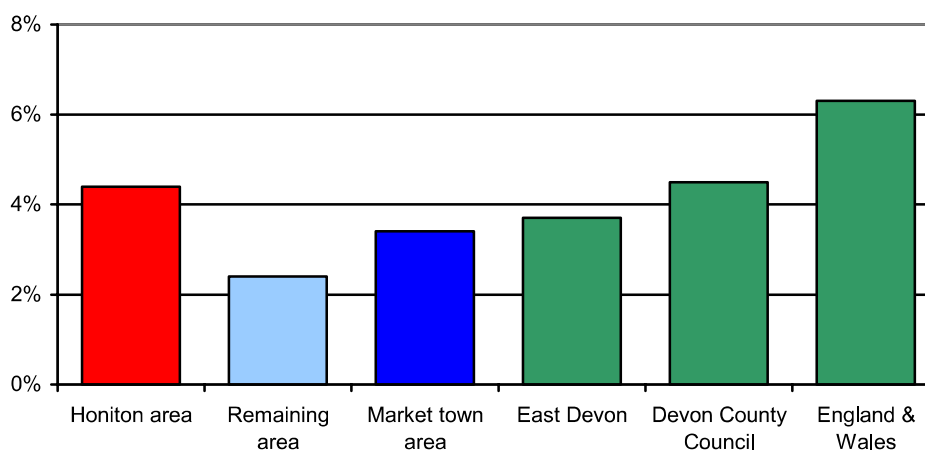
Source: 2001 Census

The data below relating to Income Support and Job Seekers Allowance are based on a best fit of Middle Super Output Areas (MSOAs). There are two MSOAs which form Honiton parish. A further two provide a best fit for the remaining parishes.

Income Support and Job Seekers Allowance claim rates (2004)

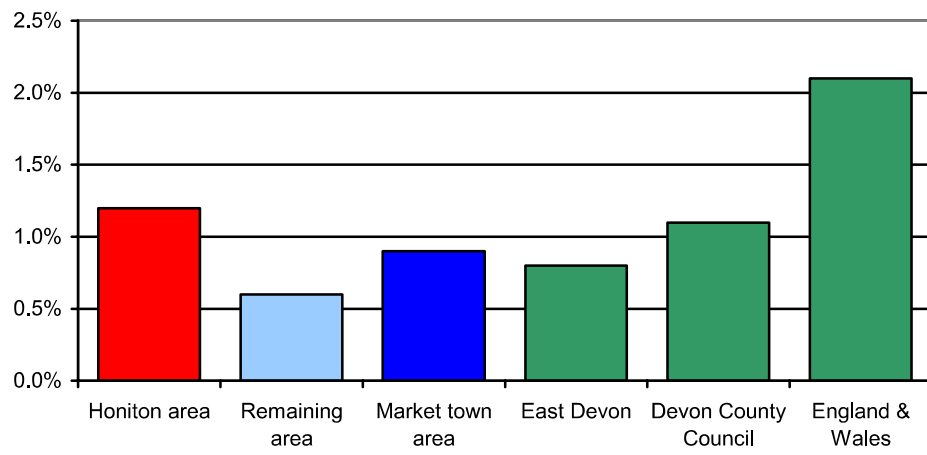
| Area | Income Support | | | Jobseekers Allowance | | |
|----------------------|--------------------------|---------------|------------|--------------------------|---------------|------------|
| | Population aged 16 to 59 | All claimants | Claim rate | Population aged 16 to 64 | All claimants | Claim rate |
| Honiton parish | 5,680 | 250 | 4.4% | 6,362 | 75 | 1.2% |
| Remaining parishes | 5,411 | 130 | 2.4% | 6,222 | 40 | 0.6% |
| Market town area | 11,091 | 380 | 3.4% | 12,584 | 115 | 0.9% |
| East Devon | 63,108 | 2,305 | 3.7% | 71,191 | 590 | 0.8% |
| Devon County Council | 388,926 | 17,530 | 4.5% | 429,574 | 4,765 | 1.1% |
| England | 30,694,973 | 1,946,020 | 6.3% | 33,239,665 | 689,810 | 2.1% |

Income Support claim rates (2004)



Source: Department for Work and Pensions

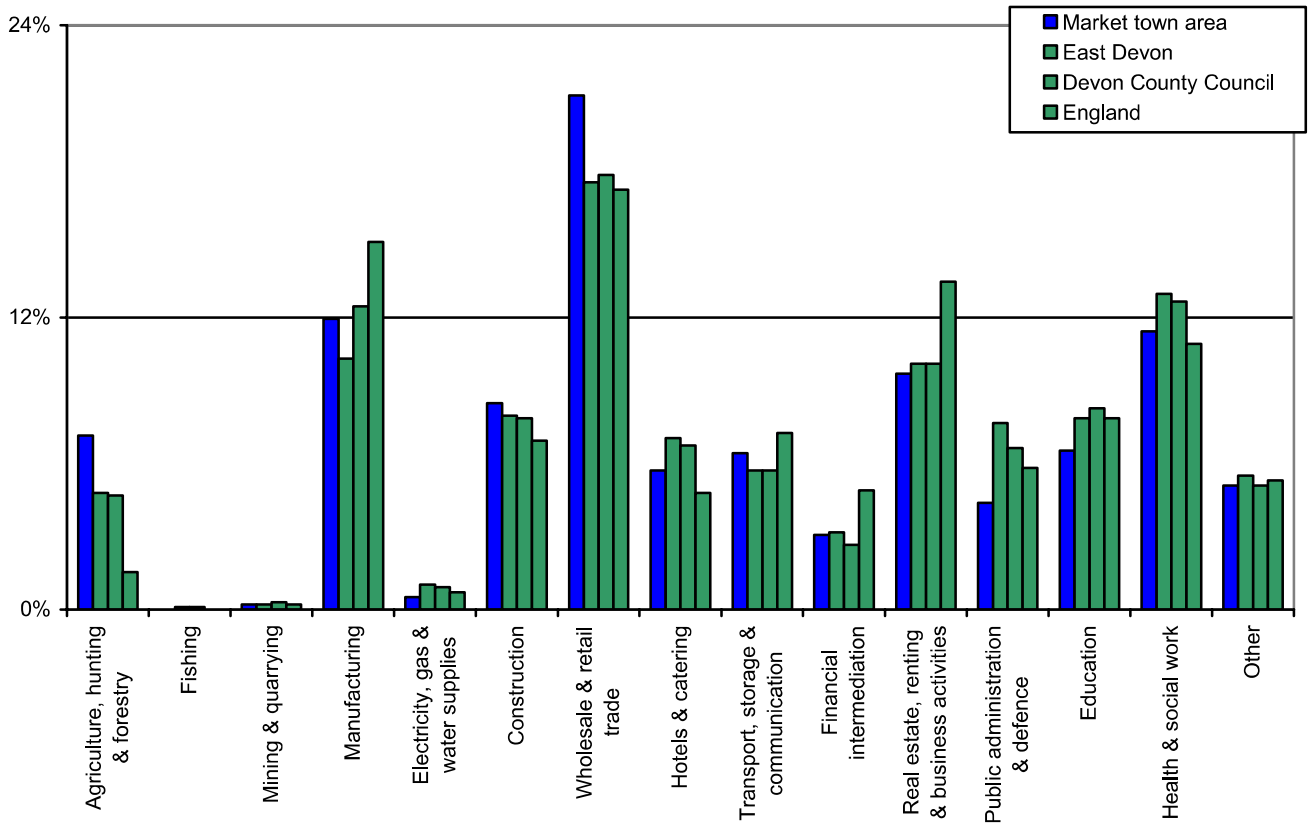
Job Seeker Allowance claim rates (2004)



Source: Department for Work and Pensions

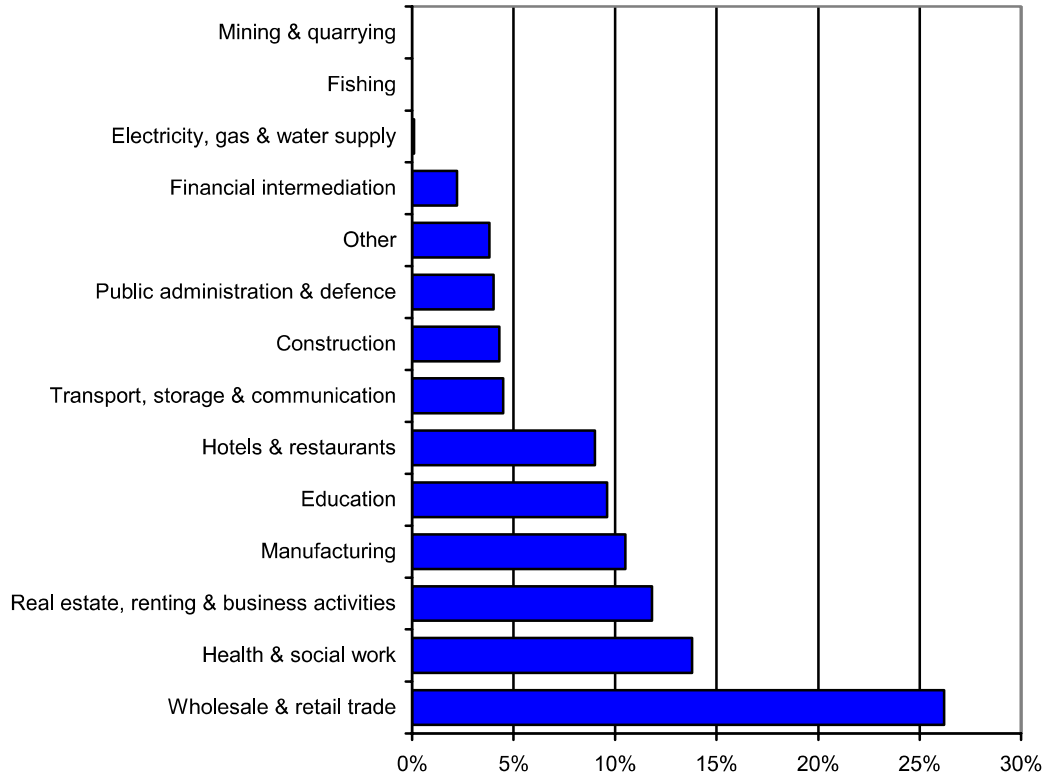
Employment of people living in the area by industry (2001)

| Sector | Honiton parish | Remaining parishes | Market town area | East Devon | Devon County Council | England |
|--|----------------|--------------------|------------------|------------|----------------------|---------|
| Agriculture, hunting & forestry | 2.6% | 15.8% | 7.0% | 4.7% | 4.6% | 1.5% |
| Fishing | 0.0% | 0.1% | 0.0% | 0.1% | 0.1% | 0.0% |
| Mining & quarrying | 0.2% | 0.3% | 0.2% | 0.2% | 0.3% | 0.2% |
| Manufacturing | 11.5% | 12.2% | 11.7% | 10.1% | 12.2% | 14.8% |
| Electricity, gas & water supplies | 0.6% | 0.4% | 0.5% | 1.0% | 0.9% | 0.7% |
| Construction | 8.2% | 8.6% | 8.3% | 7.8% | 7.7% | 6.8% |
| Wholesale & retail trade | 22.6% | 17.0% | 20.7% | 17.2% | 17.5% | 16.9% |
| Hotels and catering | 5.8% | 5.3% | 5.6% | 6.9% | 6.6% | 4.7% |
| Transport, storage & communication | 6.8% | 5.2% | 6.3% | 5.6% | 5.6% | 7.1% |
| Financial intermediation | 3.1% | 2.7% | 3.0% | 3.1% | 2.6% | 4.8% |
| Real estate, renting & business activities | 9.5% | 9.6% | 9.5% | 9.9% | 9.9% | 13.2% |
| Public administration & defence | 4.7% | 3.5% | 4.3% | 7.5% | 6.5% | 5.7% |
| Education | 7.0% | 5.3% | 6.4% | 7.7% | 8.1% | 7.7% |
| Health & social work | 11.9% | 9.7% | 11.2% | 12.7% | 12.4% | 10.7% |
| Other | 5.4% | 4.4% | 5.0% | 5.4% | 5.0% | 5.2% |



Source: 2001 Census

Percentage of businesses in profile area by Standard Industrial Classification (2004)



Source: Annual Business Inquiry

Skills and Learning

Summary

Children living in areas other than Honiton parish achieve significantly higher results at Key Stage 2 than those that live in the parish.

Achievement rates for GCSEs at grades A* to C were also better for children living outside of Honiton parish but overall results are slightly below the county average.

The overall level of qualification within the market town area is similar to the district and county averages. However, the proportion of people with no or level 1 qualifications are noticeably higher in Honiton parish. The area also has a smaller proportion of people with the highest level of qualification.

Number and percentage of pupils achieving at least Key Stage 2 Level 4 (2004)

| Area | Total pupils | English | | Maths | | Science | |
|----------------------|--------------|---------|----------|--------|----------|---------|----------|
| | | Number | % pupils | Number | % pupils | Number | % pupils |
| Honiton parish | 133 | 103 | 77.4% | 101 | 75.9% | 116 | 87.2% |
| Remaining parishes | 58 | 50 | 86.2% | 47 | 81.0% | 55 | 94.8% |
| Market town area | 191 | 153 | 80.1% | 148 | 77.5% | 171 | 89.5% |
| East Devon | 1,310 | 1,066 | 81.4% | 1,041 | 79.5% | 1,166 | 89.0% |
| Devon County Council | 7,781 | 6,030 | 77.5% | 5,766 | 74.1% | 6,803 | 87.4% |
| England | | | 75.0% | | 73.0% | | 86.0% |

Source: Children and Young People's Services, Devon County Council

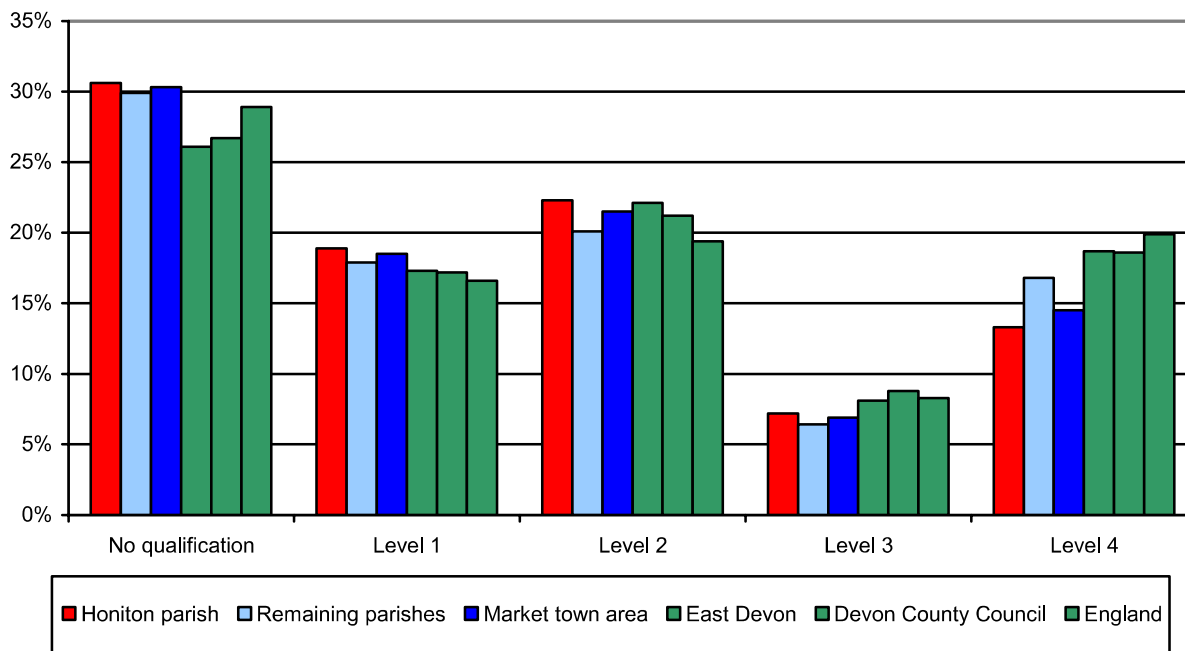
GCSE attainment (2002/03)

| Area | Number of students | Students achieving five or more A*-C | % students achieving five or more A*-C | Students achieving five or more A*-G | % students achieving five or more A*-G |
|----------------------|--------------------|--------------------------------------|--|--------------------------------------|--|
| Honiton parish | 108 | 52 | 48.1% | 100 | 92.6% |
| Remaining parishes | 53 | 28 | 52.8% | 49 | 92.5% |
| Market town area | 161 | 80 | 49.7% | 149 | 92.5% |
| East Devon | 1,168 | 655 | 56.1% | 1,082 | 92.6% |
| Devon County Council | 6,955 | 3,741 | 53.8% | 6,484 | 93.2% |
| England | | | 52.9% | | 88.8% |

Source: Children and Young People's Services, Devon County Council

Highest level of qualification (2001)

| Area | No qualifications | Level 1 | Level 2 | Level 3 | Level 4 | Other |
|----------------------|-------------------|---------|---------|---------|---------|-------|
| Honiton parish | 30.6% | 18.9% | 22.3% | 7.2% | 13.3% | 7.8% |
| Remaining parishes | 29.9% | 17.9% | 20.1% | 6.4% | 16.8% | 8.9% |
| Market town area | 30.3% | 18.5% | 21.5% | 6.9% | 14.5% | 8.2% |
| East Devon | 26.1% | 17.3% | 22.1% | 8.1% | 18.7% | 7.7% |
| Devon County Council | 26.7% | 17.2% | 21.2% | 8.8% | 18.6% | 7.6% |
| England | 28.9% | 16.6% | 19.4% | 8.3% | 19.9% | 6.9% |



Source: 2001 Census

Note:

Level 1: 1+'O' level passes, 1 CSE/GCSE any grades, NVQ level 1, Foundation GNVQ.

Level 2: 5+'O' level passes, 5+CSE's (grade A-C), School Certificate, 1+'A' levels/'AS' levels, NVQ level 2, Intermediate GNVQ.

Level 3: 2+ 'A' levels, 4+'AS' levels, Higher School Certificate, NVQ level 3, Advanced GNVQ.

Level 4: First degree, Higher degree, NVQ levels 4 and 5, HNC, HND, Qualified Teacher Status, Qualified, Medical Doctor, Qualified Dentist, Qualified Nurse, Midwife, Health Visitor.

Health, Care and Wellbeing

Summary

Incapacity Benefit and Severe Disablement Allowance claim rates are slightly below average but the figures are higher than the county average in Honiton parish.

Claim rates for Disability Living Allowance within the market town area are similar to the district and county averages. However, the claim rate in the surrounding hinterland is noticeably lower.

The rate of people living with a limiting long-term illness within the market town area is similar to the district and county averages but noticeably lower for the remaining parishes. The same is true for the general health indicator.

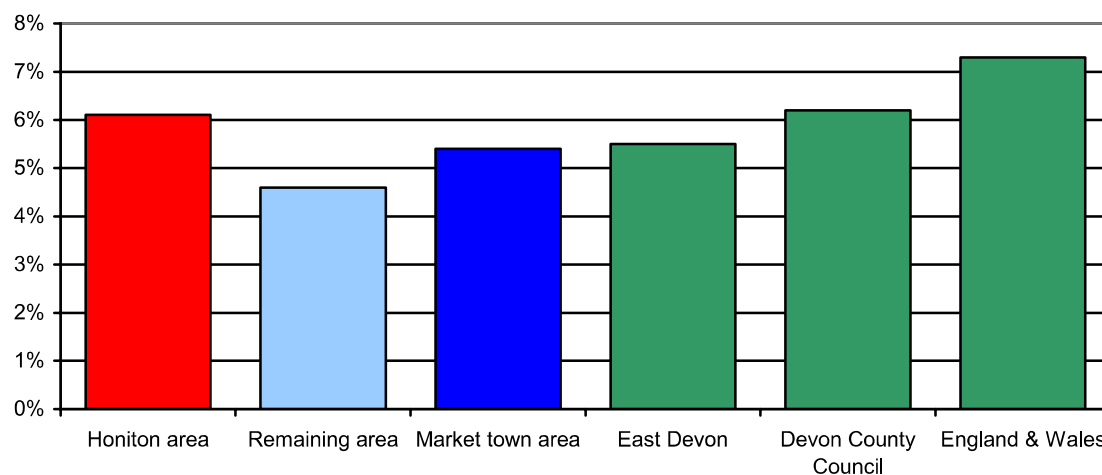
The data below relating to Income Support and Job Seekers Allowance are based on a best fit of Middle Super Output Areas (MSOAs). There is one MSOA which forms Honiton parish. A further two provide a best fit for the remaining parishes.

Incapacity Benefit & Severe Disablement Allowance and Disability Living Allowance claimant rates (2004)

| Area | Incapacity Benefit & Severe Disablement Allowance | | | Disability Living Allowance | | |
|----------------------|---|---------------|------------|-----------------------------|---------------|------------|
| | Population aged 16 to 64 | All claimants | Claim rate | Total population | All claimants | Claim rate |
| Honiton parish | 6,362 | 390 | 6.1% | 11,206 | 425 | 3.8% |
| Remaining parishes | 6,222 | 285 | 4.6% | 10,669 | 250 | 2.3% |
| Market town area | 12,584 | 675 | 5.4% | 21,875 | 675 | 3.1% |
| East Devon | 71,191 | 3,890 | 5.5% | 125,531 | 3,880 | 3.1% |
| Devon County Council | 429,574 | 26,670 | 6.2% | 704,510 | 25,645 | 3.6% |
| England & Wales | 33,239,665 | 2,421,940 | 7.3% | 52,042,019 | 2,341,615 | 4.5% |

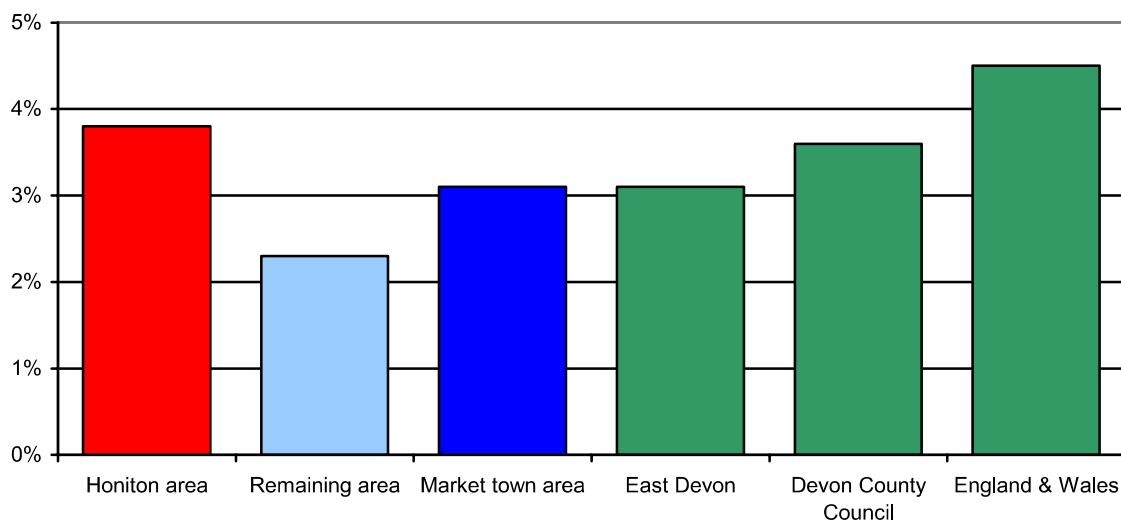
Source: Department for Work and Pensions

Incapacity Benefit and Severe Disablement Allowance claimant rates (2004)



Source: Department for Work and Pensions

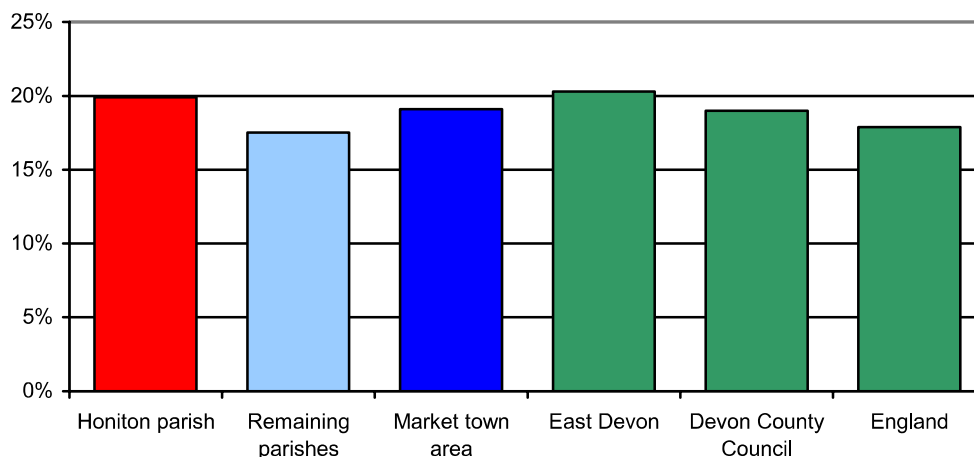
Disability Living Allowance claimant rates (2004)



Source: Department for Work and Pensions

Percentage of people living with a limiting long-term illness (2001)

| Area | All people | People living with a limiting long-term illness | % people living with a limiting long-term illness |
|----------------------|------------|---|---|
| Honiton parish | 10,857 | 2,160 | 19.9% |
| Remaining parishes | 5,447 | 952 | 17.5% |
| Market town area | 16,304 | 3,112 | 19.1% |
| East Devon | 125,520 | 25,497 | 20.3% |
| Devon County Council | 704,493 | 133,756 | 19.0% |
| England | 49,138,831 | 8,809,194 | 17.9% |



Source: 2001 Census

General health (2001)

| Area | All people | People describing their health as good or fairly good | | People describing their health as not good | |
|----------------------|------------|---|-------|--|------|
| | | Number | % | Number | % |
| Honiton parish | 10,857 | 9,833 | 90.6% | 1,024 | 9.4% |
| Remaining parishes | 5,447 | 5,034 | 92.4% | 413 | 7.6% |
| Market town area | 16,304 | 14,867 | 91.2% | 1,437 | 8.8% |
| East Devon | 125,520 | 114,558 | 91.3% | 10,962 | 8.7% |
| Devon County Council | 704,493 | 643,988 | 91.4% | 60,505 | 8.6% |
| England | 49,138,831 | 44,702,955 | 91.0% | 4,435,876 | 9.0% |

Source: 2001 Census

Older People

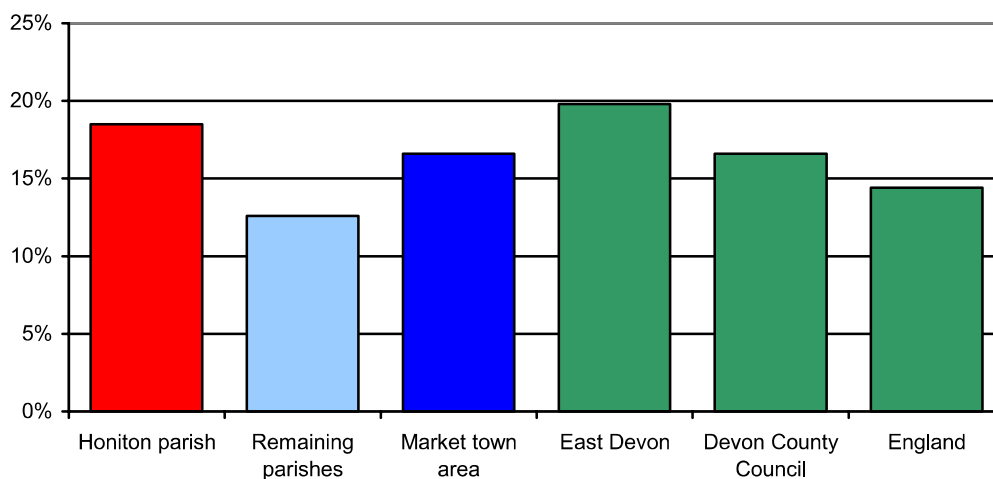
Summary

The level of households occupied by lone pensioners in the market town area is lower than the district average. However there is a noticeable difference between Honiton parish and the surrounding hinterland.

The rate of Social Services clients is lower in the area compared to the district and county averages.

Percentage of lone pensioner households (2001)

| Area | Total households | Households occupied by lone pensioners | % households occupied by lone pensioners |
|----------------------|------------------|--|--|
| Honiton parish | 4,812 | 890 | 18.5% |
| Remaining parishes | 2,243 | 283 | 12.6% |
| Market town area | 7,055 | 1,173 | 16.6% |
| East Devon | 55,011 | 10,883 | 19.8% |
| Devon County Council | 298,576 | 49,466 | 16.6% |
| England | 20,451,427 | 2,939,465 | 14.4% |



Source: 2001 Census.

Number of Social Services clients per 1,000 population (2004)

| Area | Clients by age group per 1,000 population of the same age group | | | |
|----------------------|---|-------|-------|-------------|
| | 50-64 | 65-74 | 75-84 | 85 and over |
| Honiton parish | 14.0 | 28.5 | 88.9 | 220.4 |
| Remaining parishes | 5.3 | 14.9 | 55.1 | 235.8 |
| Market town area | 10.6 | 23.4 | 78.8 | 223.8 |
| East Devon | 13.8 | 33.0 | 114.2 | 363.1 |
| Devon County Council | 14.9 | 40.6 | 142.0 | 460.3 |

Source: Adult and Community Services, Devon County Council

Children and Young People

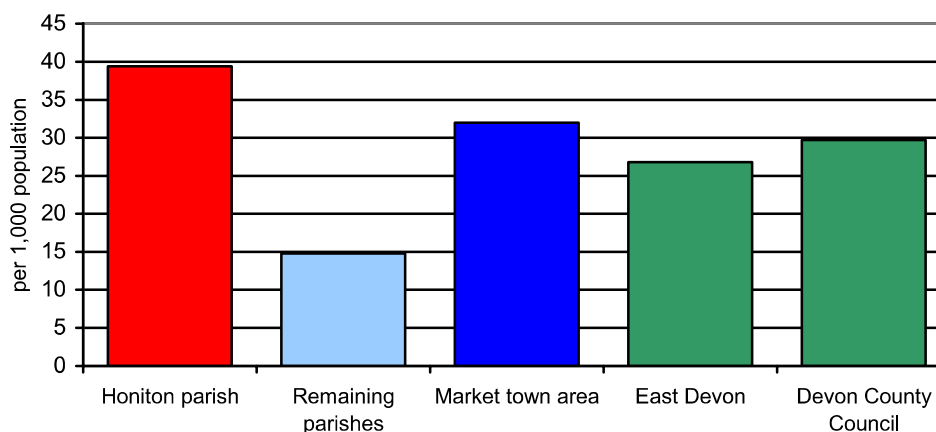
Summary

The proportion of children in need is well above the averages for the district and county in Honiton parish. The average for the surrounding hinterland is lower than the district and county averages.

The proportion of young offenders are generally slightly lower than the district and county average.

Children in need aged 0 to 17 years per 1,000 population aged 0 to 17 years (2003/04)

| Area | Number of children aged 0 to 17 | Number of children in need aged 0 to 17 | Children in need aged 0 to 17 per 1,000 population aged 0 to 17 |
|----------------------|---------------------------------|---|---|
| Honiton parish | 2,361 | 93 | 39.4 |
| Remaining parishes | 1,011 | 15 | 14.8 |
| Market town area | 3,372 | 108 | 32.0 |
| East Devon | 23,984 | 642 | 26.8 |
| Devon County Council | 145,459 | 4,317 | 29.7 |



Source: Children and Young People's Services, Devon County Council

Young offenders aged 10 to 17 years per 1,000 population aged 10 to 17 years (2000 to 2002)

| Area | 2000 | 2001 | 2002 |
|----------------------|------|------|------|
| Honiton parish | 19.4 | 9.9 | 14.6 |
| Remaining parishes | 4.4 | 6.6 | 20.7 |
| Market town area | 16.6 | 10.9 | 15.8 |
| East Devon | 12.3 | 12.5 | 15.2 |
| Devon County Council | 14.2 | 20.0 | 19.3 |

Source: Youth Offending Team

Community Safety

Summary

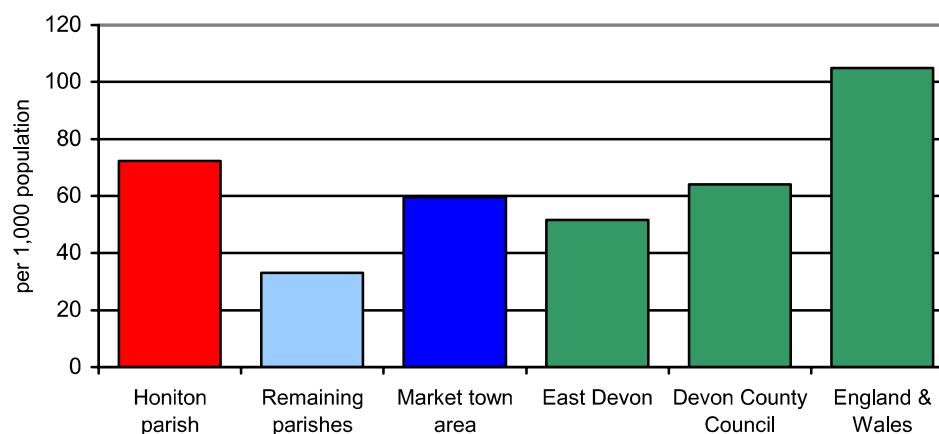
The rates of crime in all categories are highest in Honiton parish and higher than the county figure in total crime and violent crime.

Crime rates in the rural area are significantly lower than all comparators.

Data comprises addressable data only, and as such rates are based on approx 92% of all crime.

Total crime per 1,000 population (2004/05)

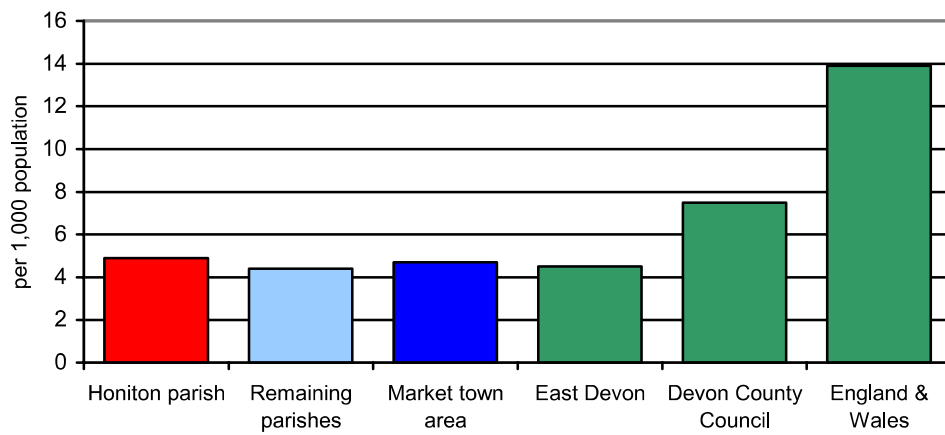
| Area | Population | Total number of crimes | Crimes per 1,000 population |
|----------------------|------------|------------------------|-----------------------------|
| Honiton parish | 11,471 | 829 | 72.3 |
| Remaining parishes | 5,465 | 181 | 33.1 |
| Market town area | 16,936 | 1,010 | 59.6 |
| East Devon | 132,548 | 6,839 | 51.6 |
| Devon County Council | 742,911 | 47,612 | 64.1 |
| England & Wales | 53,045,600 | 5,562,700 | 104.9 |



Source: Devon & Cornwall Constabulary (Amethyst)

Vehicle crime per 1,000 population (2004/05)

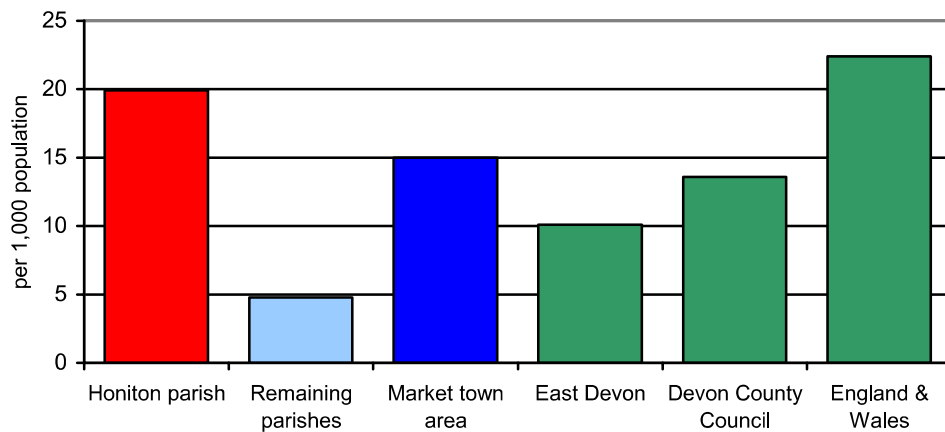
| Area | Population | Number of vehicle crimes | Vehicle crimes per 1,000 population |
|----------------------|------------|--------------------------|-------------------------------------|
| Honiton parish | 11,471 | 56 | 4.9 |
| Remaining parishes | 5,465 | 24 | 4.4 |
| Market town area | 16,936 | 80 | 4.7 |
| East Devon | 132,548 | 597 | 4.5 |
| Devon County Council | 742,911 | 5,594 | 7.5 |
| England & Wales | 53,045,600 | 738,500 | 13.9 |



Source: Devon & Cornwall Constabulary (Amethyst)

Violent crime per 1,000 population (2004/05)

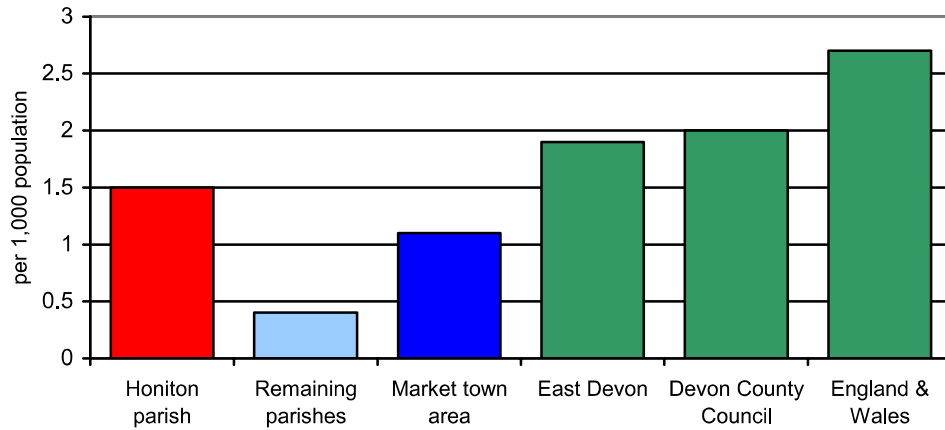
| Area | Population | Number of violent crimes | Violent crimes per 1,000 population |
|----------------------|------------|--------------------------|-------------------------------------|
| Honiton parish | 11,471 | 228 | 19.9 |
| Remaining parishes | 5,465 | 26 | 4.8 |
| Market town area | 16,936 | 254 | 15.0 |
| East Devon | 132,548 | 1,334 | 10.1 |
| Devon County Council | 742,911 | 10,138 | 13.6 |
| England & Wales | 53,045,600 | 1,185,700 | 22.4 |



Source: Devon & Cornwall Constabulary (Amethyst)

Drug offences per 1,000 population (2004/05)

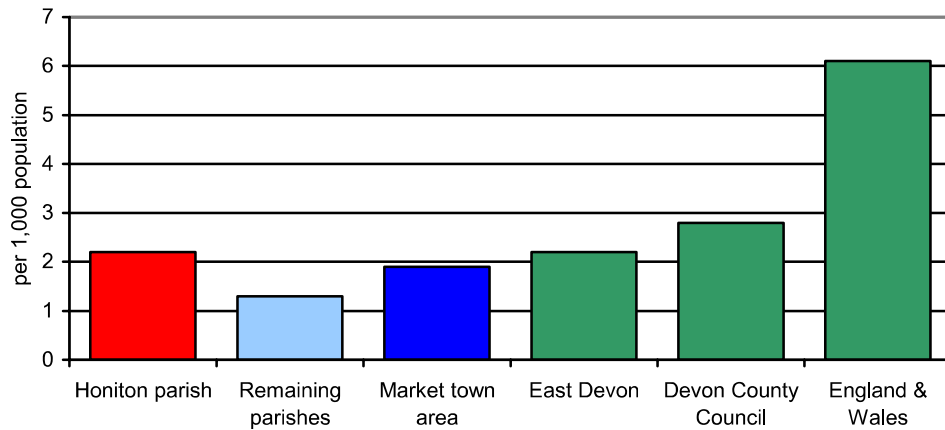
| Area | Population | Number of drug offences | Drug offences per 1,000 population |
|----------------------|------------|-------------------------|------------------------------------|
| Honiton parish | 11,471 | 17 | 1.5 |
| Remaining parishes | 5,465 | 2 | 0.4 |
| Market town area | 16,936 | 19 | 1.1 |
| East Devon | 132,548 | 258 | 1.9 |
| Devon County Council | 742,911 | 1,492 | 2.0 |
| England & Wales | 53,045,600 | 142,300 | 2.7 |



Source: Devon & Cornwall Constabulary (Amethyst)

Dwelling burglaries per 1,000 population (2004/05)

| Area | Population | Number of dwelling burglaries | Dwelling burglaries per 1,000 population |
|----------------------|------------|-------------------------------|--|
| Honiton parish | 11,471 | 25 | 2.2 |
| Remaining parishes | 5,465 | 7 | 1.3 |
| Market town area | 16,936 | 32 | 1.9 |
| East Devon | 132,548 | 291 | 2.2 |
| Devon County Council | 742,911 | 2,046 | 2.8 |
| England & Wales | 53,045,600 | 321,500 | 6.1 |



Source: Devon & Cornwall Constabulary (Amethyst)

Housing

Summary

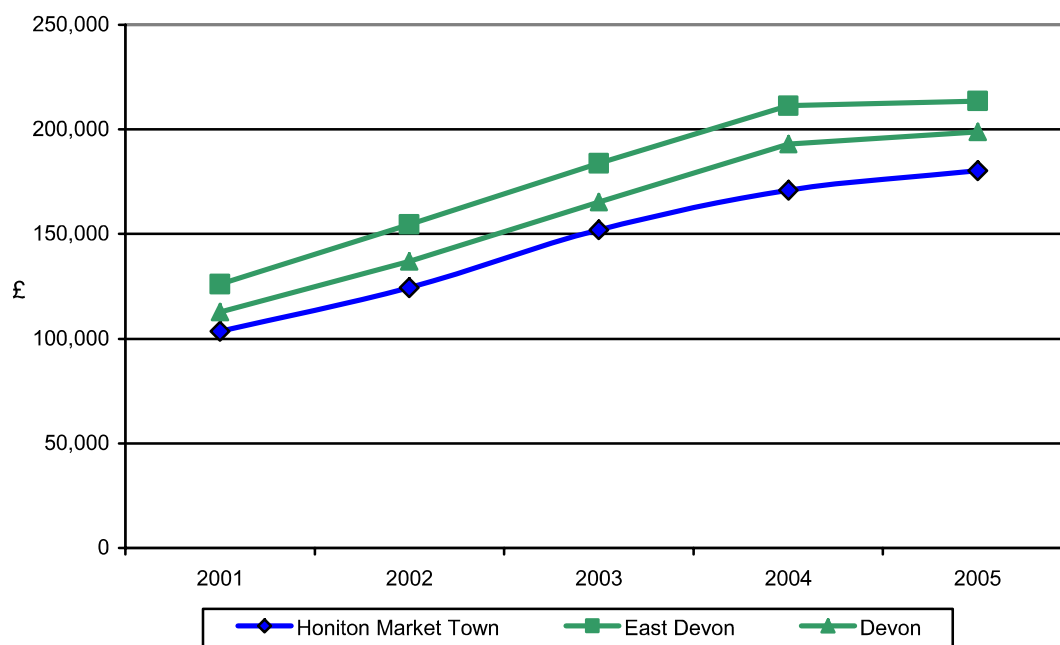
House prices outside in the rural area have increased at a much higher rate than in Honiton parish. The average house price in the market town area has increased by over 70% in the four years from 2001 to 2005. House prices are consistently below the district and county prices.

In 2004 average house prices within the market town area were 20% lower than the district average and 12% lower than the county average.

The dwellings by tenure figures are close to the county and national figures with a high percentage of local authority in Honiton parish and high numbers of owner occupied in the remaining parishes area.

House price change (2001 to 2005)

| Area | 2001 | 2002 | 2003 | 2004 | 2005 | % change 2001 - 2005 |
|----------------------|----------|----------|----------|----------|----------|-------------------------|
| Honiton parish | £105,962 | £125,305 | £153,940 | £170,436 | £169,903 | 60.3% |
| Remaining parishes | £89,322 | £119,528 | £140,162 | £174,564 | £235,858 | 164.1% |
| Market town area | £103,615 | £124,383 | £152,113 | £170,960 | £180,317 | 74.0% |
| East Devon | £126,083 | £154,580 | £183,781 | £211,411 | £213,581 | 69.4% |
| Devon County Council | £112,752 | £136,982 | £165,267 | £193,056 | £198,835 | 76.3% |



Source: Land Registry

Note: Data comprises sales between April and December 2001, all sales in 2002, 2003 and 2004 and from January to March 2005.

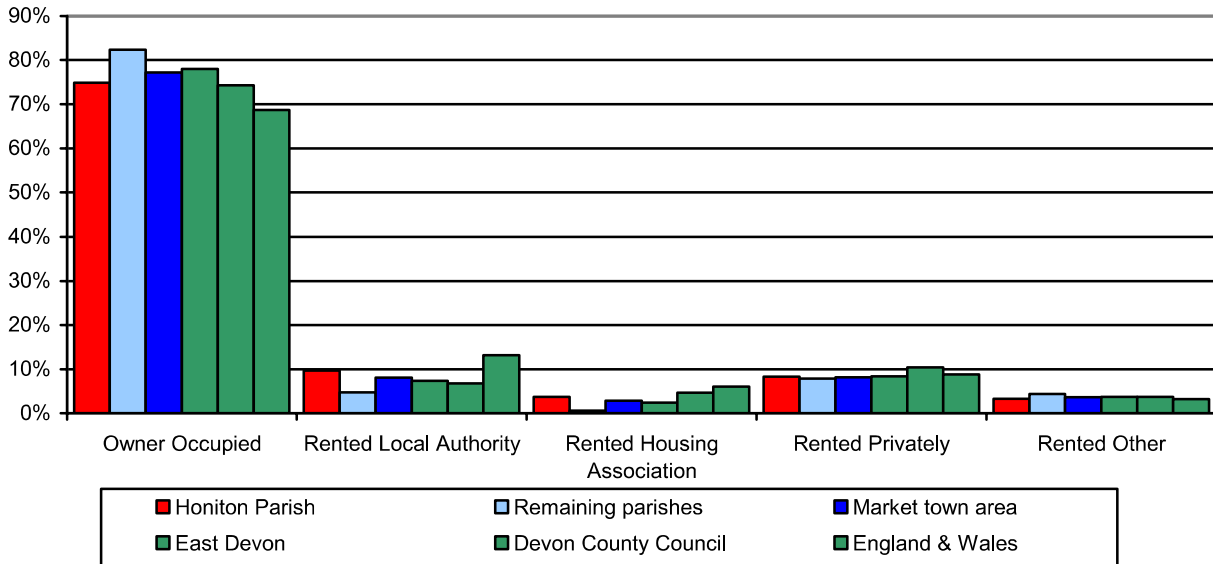
Average house price (2004)

| Area | Detached | Semi-Detached | Terraced | Flat/Maisonette | Overall |
|----------------------|----------|---------------|----------|-----------------|----------|
| Honiton parish | £238,251 | £159,063 | £141,288 | £87,892 | £170,436 |
| Remaining parishes | £227,181 | £171,558 | £130,397 | £126,500 | £174,564 |
| Market town area | £236,640 | £160,567 | £139,883 | £90,650 | £170,960 |
| East Devon | £297,030 | £187,430 | £166,912 | £145,521 | £211,411 |
| Devon County Council | £266,940 | £180,252 | £157,985 | £138,260 | £193,056 |
| England & Wales | £270,745 | £162,379 | £136,862 | £168,298 | £178,504 |

Source: Land Registry

Percentage of dwellings by tenure (2001)

| Area | All households | Owner Occupied | Rented accommodation | | | |
|----------------------|----------------|----------------|----------------------|---------------------|---------|-------|
| | | | Local Authority | Housing Association | Private | Other |
| Honiton parish | 4,812 | 74.9% | 9.7% | 3.8% | 8.3% | 3.3% |
| Remaining parishes | 2,246 | 82.3% | 4.8% | 0.6% | 7.9% | 4.4% |
| Market town area | 7,058 | 77.2% | 8.1% | 2.8% | 8.2% | 3.7% |
| East Devon | 55,011 | 78.0% | 7.4% | 2.4% | 8.4% | 3.8% |
| Devon County Council | 298,576 | 74.3% | 6.8% | 4.7% | 10.4% | 3.8% |
| England & Wales | 20,451,427 | 68.7% | 13.2% | 6.1% | 8.8% | 3.2% |



Source: 2001 Census

Transport

Summary

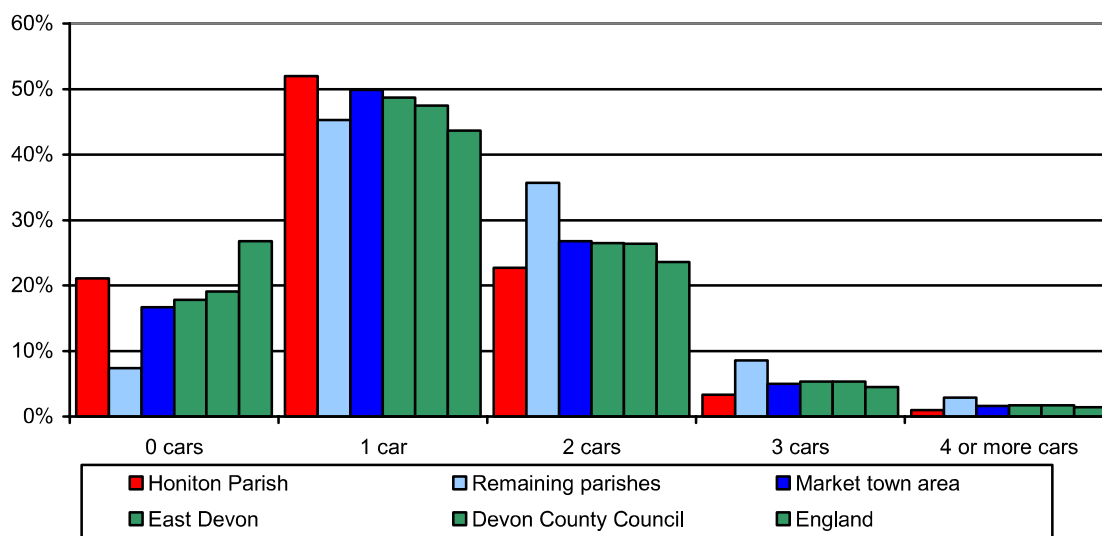
There are higher levels of car ownership outside Honiton parish. More than one in five households in Honiton parish do not have access to a car.

Over 30% of people living outside Honiton parish work from home. Within Honiton parish almost 20% of people travel to work either on foot or by bicycle which is noticeably higher than the district and county averages. Use of public transport is comparatively low.

The percentage of households who can access an acute hospital within 60 minutes by public transport is significantly below the county and national averages in the surrounding hinterland at 19%. Access to shops and GP are also below the county and national averages outside of Honiton.

Car ownership (2001)

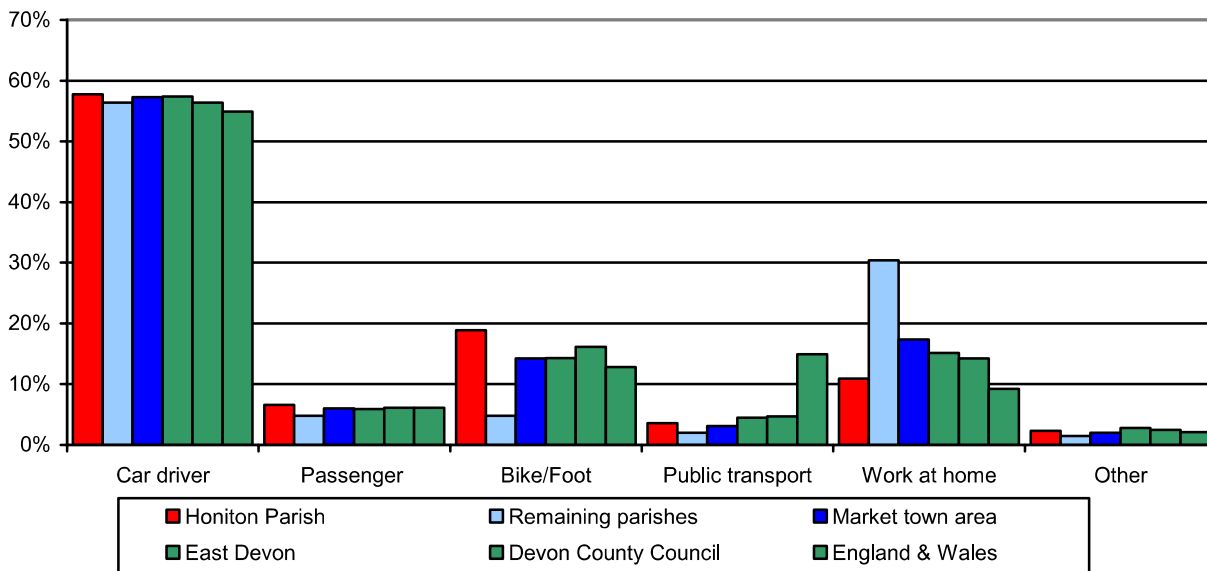
| Area | All households | Households with: | | | | |
|----------------------|----------------|------------------|---------|----------|------------|-------------------|
| | | No car | One car | Two cars | Three cars | Four or more cars |
| Honiton parish | 4,812 | 21.1% | 52.0% | 22.7% | 3.3% | 1.0% |
| Remaining parishes | 2,243 | 7.4% | 45.3% | 35.7% | 8.6% | 2.9% |
| Market town area | 7,055 | 16.7% | 49.9% | 26.8% | 5.0% | 1.6% |
| East Devon | 55,011 | 17.8% | 48.7% | 26.5% | 5.3% | 1.7% |
| Devon County Council | 298,576 | 19.1% | 47.5% | 26.4% | 5.3% | 1.7% |
| England | 20,451,427 | 26.8% | 43.7% | 23.6% | 4.5% | 1.4% |



Source: 2001 Census

Mode of travel to work (2001)

| Area | All 16-74 year olds in Employment | Percentage of population by mode of travel to work | | | | | |
|----------------------|-----------------------------------|--|---------------------------|----------------------|---------------------|----------------|-------|
| | | By car or van | Passenger in a car or van | On a bike or by foot | By public transport | Work from home | Other |
| Honiton parish | 4,656 | 57.8% | 6.6% | 18.9% | 3.6% | 10.9% | 2.3% |
| Remaining parishes | 2,342 | 56.4% | 4.8% | 4.8% | 2.0% | 30.4% | 1.5% |
| Market town area | 6,998 | 57.3% | 6.0% | 14.2% | 3.1% | 17.4% | 2.0% |
| East Devon | 52,509 | 57.4% | 5.9% | 14.3% | 4.5% | 15.1% | 2.8% |
| Devon County Council | 314,267 | 56.4% | 6.1% | 16.1% | 4.7% | 14.2% | 2.5% |
| England | 22,441,498 | 54.9% | 6.1% | 12.8% | 14.9% | 9.2% | 2.1% |



Source: 2001 Census

The data below relating to accessibility by public transport are based on a best fit of Lower Super Output Areas (LSOAs).

Accessibility by public transport (2005)

| Area | Number of households | Percentage of households that can access: | | |
|----------------------|----------------------|---|----------------------|-------------------------|
| | | Acute hospital within 60 minutes | GP within 30 minutes | Shops within 30 minutes |
| Honiton parish | 4,382 | 96.9% | 100.0% | 100.0% |
| Remaining parishes | 3,358 | 18.7% | 45.9% | 45.9% |
| Market town area | 7,740 | 63.0% | 76.6% | 76.6% |
| East Devon | 54,998 | 66.1% | 90.0% | 88.3% |
| Devon County Council | 298,578 | 66.7% | 86.6% | 85.2% |
| England | 17,436,116 | 82.8% | 95.2% | 94.4% |

Source: Department for Transport

Note: Acute hospitals are establishments which provide at least minimal medical, surgical or obstetrical services for inpatient treatment and/or care, and which provide round-the-clock comprehensive qualified nursing service as well as other necessary professional services. Most patients require a relatively short stay.

The Environment – Landscape

Summary

In 2002 Devon County Council undertook and published a landscape appraisal of the county which included a landscape character assessment. The result of this assessment was the division of the County into 32 Landscape Character Zones. The Honiton market town area contains two Landscape Character Zones.

Landscape character

Landscape character is defined as a distinct and recognisable pattern of elements that occur consistently in a particular type of landscape. Character makes each part of the landscape distinct, and gives each its particular sense of place.

Landscape character has an important role to play in that it informs the Devon County Structure Plan's fundamental landscape policy (CO1), requiring that development should be informed by and sympathetic to the landscape character of the area.

In 2002 Devon County Council undertook and published a landscape appraisal of the County which included a landscape character assessment. The result of this assessment was the division of the County into 32 Landscape Character Zones (LCZs), each with its own description and distinctive key characteristic features. The Honiton market town area contains parts of two of these LCZs, for those which are largely within the market town some of their key characteristics are outlined below.

Greensand Ridges

Location - The zone occupies two separate areas in the far south east corner of the County, the two parts being separated by the Axe Valley. The larger, more westerly area stretches from the Somerset boundary in the north to the English Channel coast in the south, bounded on the west by a line between Budleigh Salterton, Ottery St Mary, Honiton and Culmstock and on the east by the Axe Valley. It is this part of the zone which is located in the market town area. The smaller, eastern area abuts the Dorset boundary and covers an area bounded by Lyme Regis and Axminster but excluding the coast.

Designations - The whole of the western element within the market town area is covered by the national designation Area of Outstanding Natural Beauty (AONB), with the exception of a very small area adjacent to Honiton. Two separate but contiguous AONBs are involved, virtually dividing this part of the zone into two equal halves. The northern half falls within the Blackdown Hills AONB and the southern half the East Devon AONB, the boundary being the A35 road linking Honiton and Axminster.

Key Characteristic Features

- Long greensand ridges including heath and forestry, beech hedges and avenues.
- Plateau landscape on ridge tops which includes common land, parliamentary enclosures, airfields and communications structures.
- Steep valleys between ridges enclosing a varied farming landscape, with woodland, hedgerow trees and springline flushes.
- Historic farm buildings utilising local materials.
- Springline settlements.

Mid Devon Farming Belt

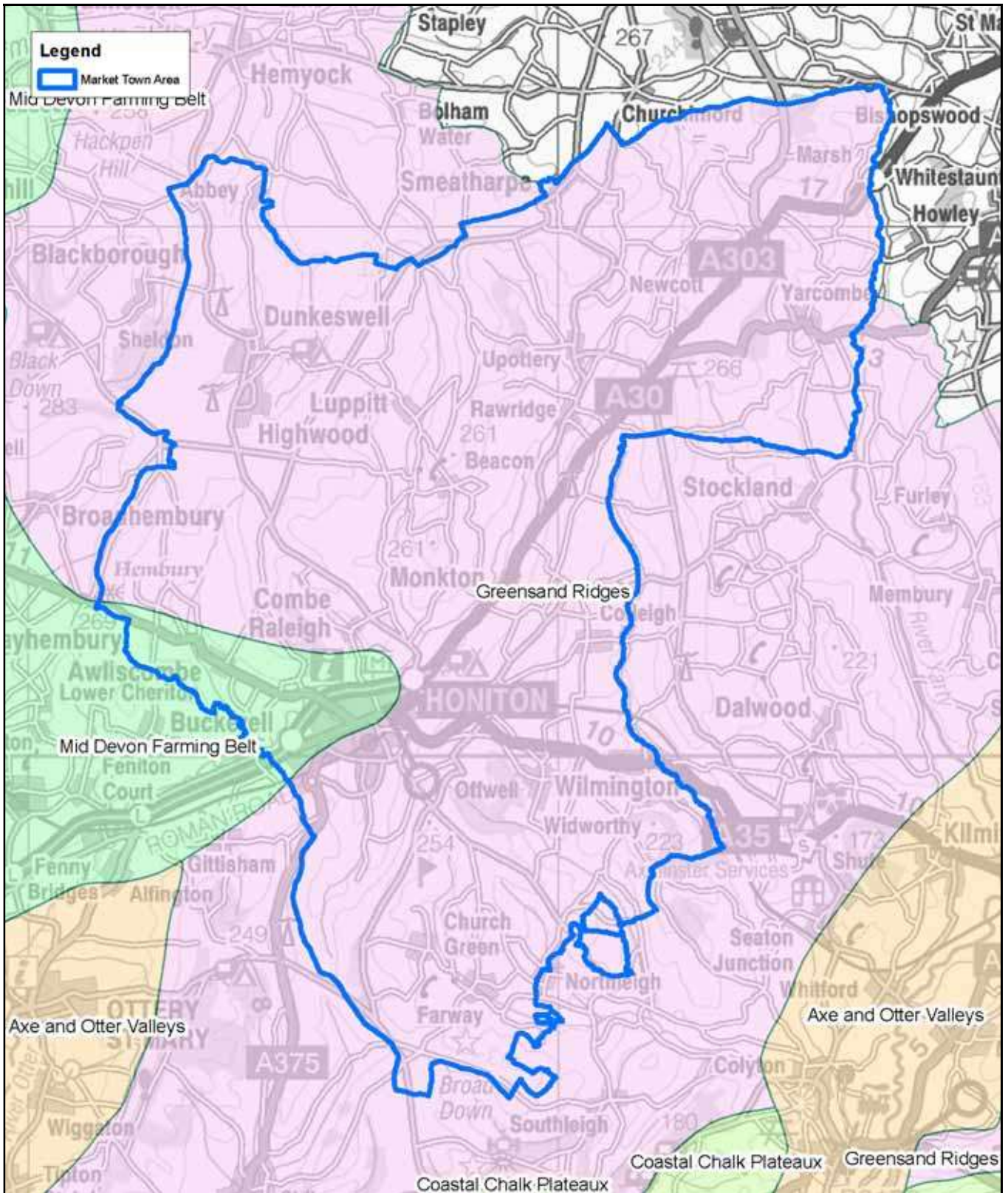
Location – This zone covers a broad swathe of central Devon and reaches its easternmost extent here where a small part of the market town area immediately west of Honiton is included.

Designations - None of the zone within the market town area is subject to any landscape designation.

Key Characteristic Features

- Flat or rolling mixed farmland with distinctive red soils.
- Relatively few woodlands, meaning hedgerow trees are an important landscape element.
- Major road and rail corridors: also the route of transmission lines.
- Heavily settled, by Devon standards, with many villages and scattered farms and a number of large towns.
- Cob and thatch buildings.

Landscape Character Zones within the market town area



Crown Copyright. All rights reserved. Devon County Council. 100019783 2006

The Environment – Wildlife and Geology

Summary

The last 60 years have seen many dramatic changes within the English countryside, with increasing urbanisation and shifting patterns of agriculture. Devon has fared better than most, however, being protected by its remoteness and undulating terrain.

There remains much wildlife and geology to enjoy and conserve, and many opportunities exist throughout the County to enhance the natural environment. Landowners, industry and, of course, local communities all have the chance to contribute to the conservation of Devon's rich natural history.

The area around Honiton is rich in wildlife. Areas of dry heathland ridges such as at Gittisham Hill and Dunkeswell, small wooded valleys with areas of flower-rich grasslands and spring-line mires, and rich networks of hedgerows all combine to create a diverse landscape. The River Otter adds to this richness, as do sites such as Hense Moor, one of the best remaining lowland valley bogs in Devon. The area is also important for its geology, as witnessed by the presence several nationally important geological SSSIs.

These habitats support many plants and animals. For example, otters are present on the River Otter, fortunately, and dormice can still be found in the area. Some of the grasslands still support good populations of orchids, such as common-spotted and green-winged, and the mix of habitats remaining still support many invertebrates and birds. Indeed, if you are lucky, you may hear curlew calling at Hense Moor.

Key sites

The table below contains information on the key features of some of the most important wildlife sites of this part of Devon. A map is also included to illustrate these.

| Site name | Interest | Designation |
|--------------------------|---|------------------------------|
| Hense Moor | Good example of lowland mixed valley bog. | SSSI |
| Hense Moor Meadows | Species-rich neutral to calcareous grassland. | SSSI |
| Reed's Farm Pit | Important exposures of Cretaceous sediments, with fossil fauna. | gSSSI |
| Southey & Gotleigh Moors | Mosaic of valley mire, acid grassland and alder/birch carr. | SSSI |
| Wilmington Quarry | Good exposure of the Cenomanian Wilmington Sands. | gSSSI |
| Hawkswood | Heath and grassland with naturally regenerating birch scrub. | Devon Wildlife Trust reserve |
| The Rough | Damp unimproved grassland with a small area of woodland. | Devon Wildlife Trust reserve |

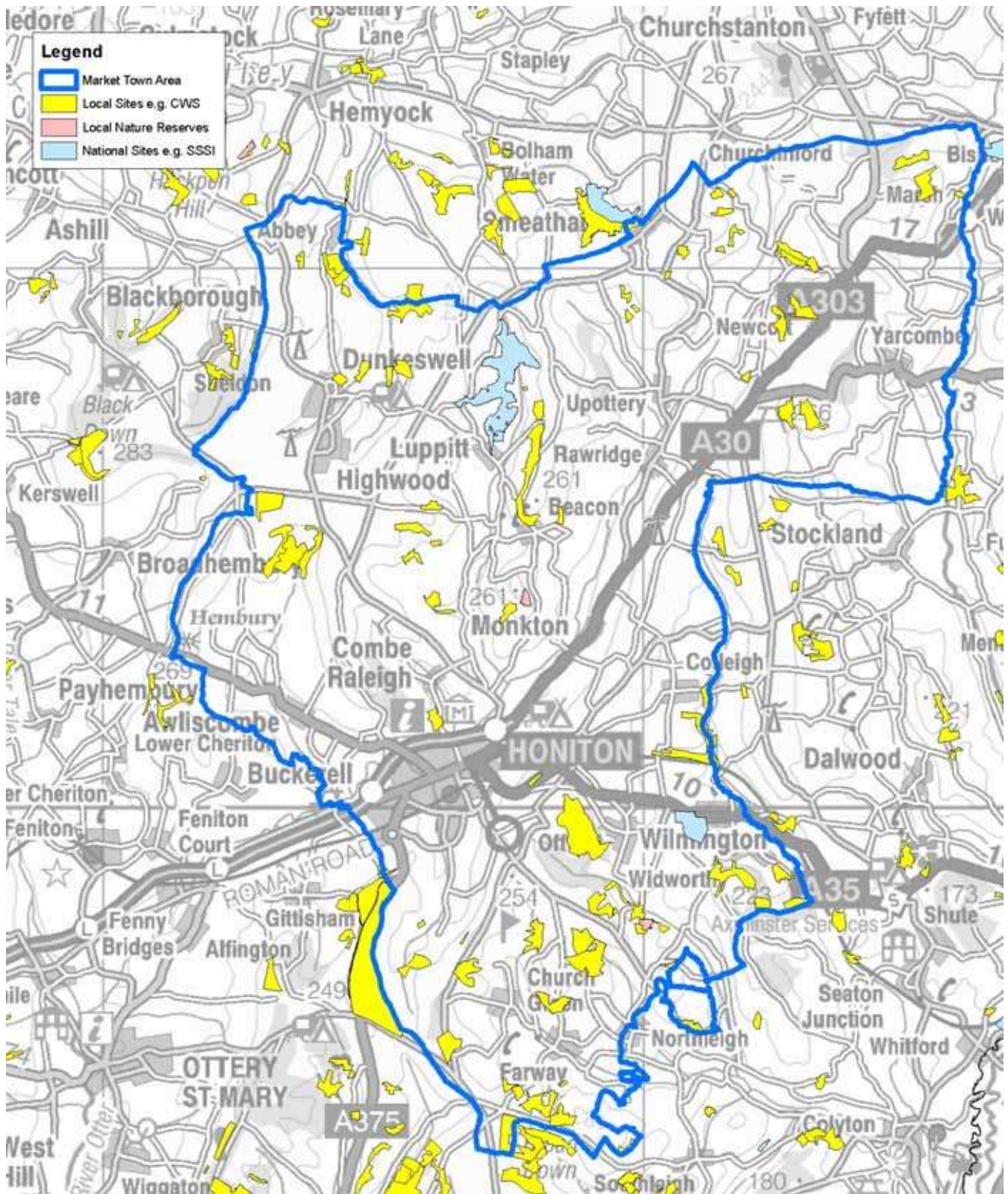
In addition to the table above, the Honiton area has 79 **County Wildlife Sites**. These cover a range of habitats including ancient semi-natural woodland, springline mire, dry heath and unimproved neutral grassland.

Key:

Sites of Special Scientific Interest (SSSI): these sites are notified because of their national importance for wildlife or geological features (gSSSI, above). SSSI is a statutory designation with legal implications. SSSI status does not confer any right of access to the public.

County Wildlife Sites (CWS): these are sites of county importance for wildlife. CWS is not a statutory designation and does not have any legal status, though CWSs are usually included in district planning documents. CWS recognition places no formal obligation on the landowner, but may increase eligibility for land management grants. There are also County Geological Sites of a similar standing.

Key sites within the market town area



Crown Copyright. All rights reserved. Devon County Council. 100019783 2006