

## Area definition

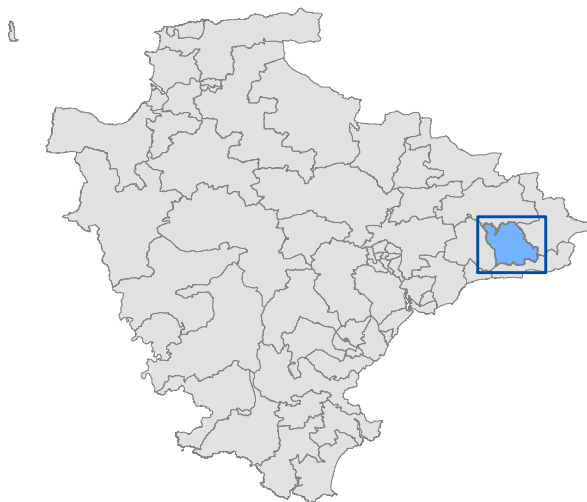
This profile is one of 62 (one for each electoral division) that have been produced by Devon County Council's Strategic Intelligence unit. They aim to give a broad overview of each County Councillor's electoral division.

Each profile covers a range of topics such as population, the economy, education standards and house prices.

Further, more detailed information may be available if required - please contact Strategic Intelligence for further information.

Email: [StrategicIntelligence@devon.gov.uk](mailto:StrategicIntelligence@devon.gov.uk)

Telephone: 01392 382001



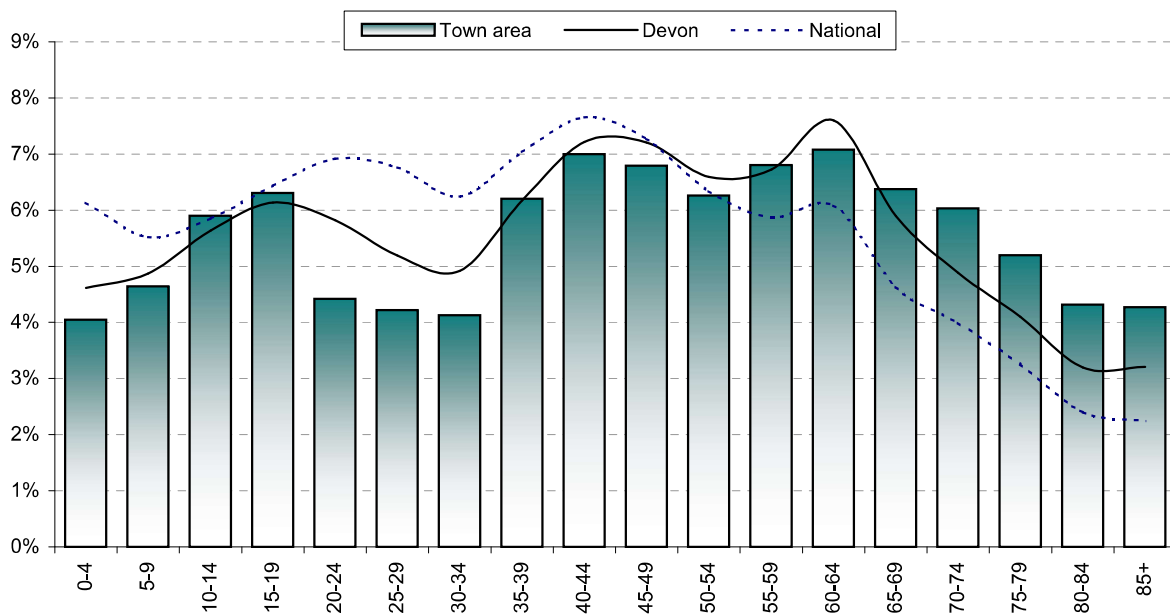
© Crown copyright. All rights reserved. 100019783 2010

The Honiton St Michael's Electoral Division comprises the following 2 wards: Coly Valley and Honiton St. Michael's.

# Population

Total population	Coly Valley	Honiton St Michael's	Electoral Division	East Devon	Devon	National
2001	4,282	6,920	11,202	125,520	704,497	57,103,927
2008	4,426	6,889	11,315	132,700	754,700	59,608,200
Change	144	-31	113	7180	50203	2504273
% change	3%	0%	1%	6%	7%	4%

Proportion aged	Coly Valley	Honiton St Michael's	Electoral Division	East Devon	Devon	National
0-19	19.1%	23.1%	21.5%	20.1%	21.7%	24.0%
20-39	14%	23%	20%	19%	23%	27%
40-59	28%	28%	28%	27%	28%	27%
60-79	32%	21%	25%	27%	23%	18%
80 and over	11%	8%	9%	9%	7%	5%



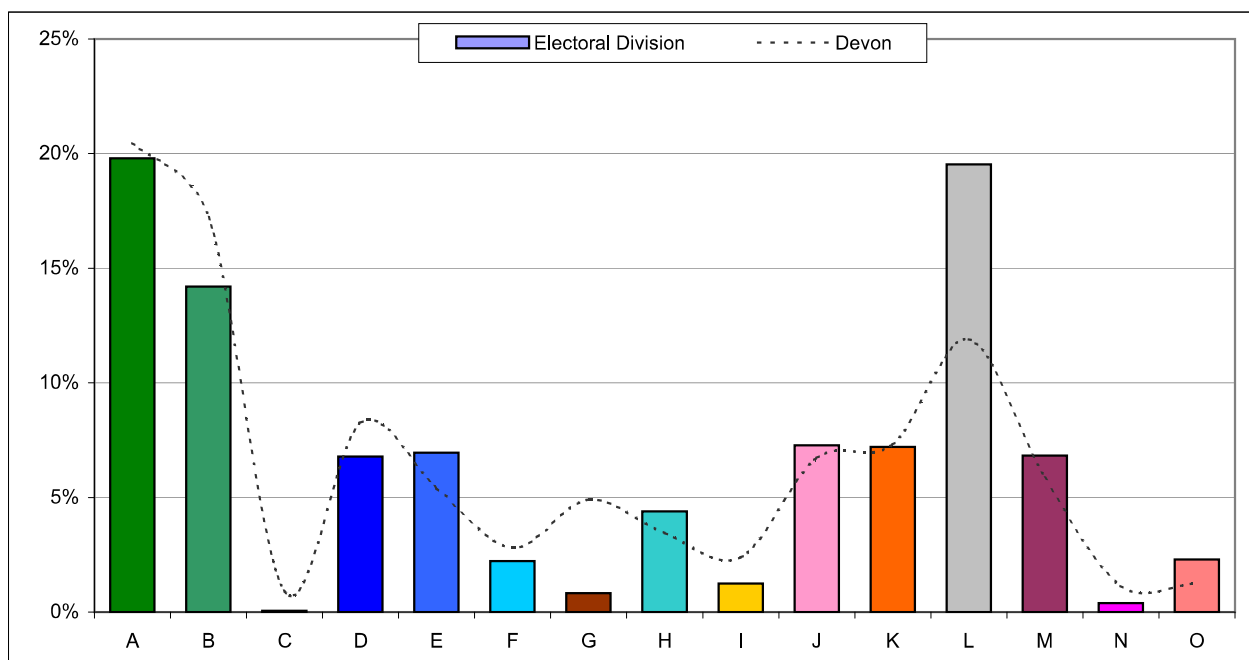
## Population attributes

Information about the people that live in the area is taken from Experian's Mosaic data. Mosaic is based on the assumption that people living in an area are likely to be similar; however, it does not provide definitive description of each person.

The Mosaic data are broken down into a number of groups, each one describing a section of the population.

	Households	%	Devon
A - Residents of isolated rural communities	1053	19.8%	20.5%
B - Residents of small and mid-sized towns with strong local roots	755	14.2%	17.2%
C - Wealthy people living in the most sought after neighbourhoods	3	0.1%	0.9%
D - Successful professionals living in suburban or semi-rural homes	361	6.8%	8.3%
E - Middle income families living in moderate suburban semis	370	7.0%	5.4%
F - Couples with young children in comfortable modern housing	118	2.2%	2.8%
G - Young, well-educated city dwellers	44	0.8%	4.9%
H - Couples and young singles in small modern starter homes	234	4.4%	3.5%
I - Lower income workers in urban terraces in often diverse areas	66	1.2%	2.4%
J - Owner occupiers in older-style housing in ex-industrial areas	387	7.3%	6.7%
K - Residents with sufficient incomes in right-to-buy social houses	383	7.2%	7.3%
L - Active elderly people living in pleasant retirement locations	1039	19.5%	11.9%
M - Elderly people reliant on state support	363	6.8%	5.9%
N - Young people renting flats in high density social housing	21	0.4%	1.1%
O - Families in low-rise social housing with high levels of benefit needed	122	2.3%	1.3%

Distribution of households by Mosaic group



## Deprivation

The principal source of deprivation data is currently The Indices of Deprivation 2007. This is a Lower Super Output Area (LSOA) level measure of deprivation. There are over 32,000 LSOAs in England, each one containing about 1,500 people. They were developed following the 2001 Census. The index comprises seven domains: income, employment, health & disability, education & training, barriers to housing & services, the living environment and crime. These are combined to give an overall indication of deprivation.

### Population living in deprived areas

Population within most deprived 25% of areas in England	0
% population within most deprived 25% of areas in England	0%
Population within least deprived 25% of areas in England	3,005
% population within least deprived 25% of areas in England	26%

Deprivation data are not available for wards but the following tables show which wards contain the most deprived LSOA in the electoral division.

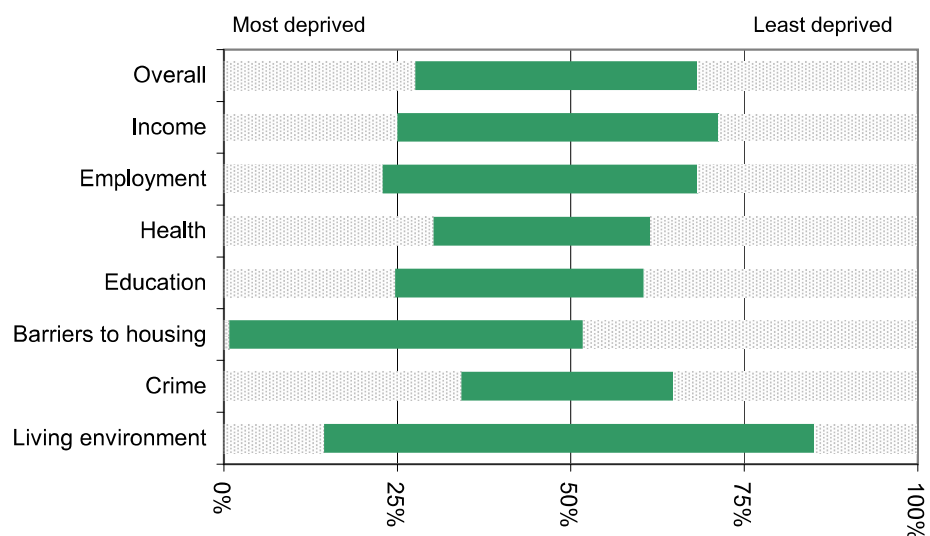
### Most deprived areas

Overall	Honiton St Michael's
Income Deprivation	Honiton St Michael's
Employment Deprivation	Honiton St Michael's
Health Deprivation and Disability	Honiton St Michael's
Education, Skills and Training Deprivation	Honiton St Michael's
Barriers to Housing and Services	Coly Valley
Living Environment Deprivation	Coly Valley
Crime	Honiton St Michael's

### Least deprived areas

Overall	Honiton St Michael's
Income Deprivation	Honiton St Michael's
Employment Deprivation	Honiton St Michael's
Health Deprivation and Disability	Honiton St Michael's
Education, Skills and Training Deprivation	Honiton St Michael's
Barriers to Housing and Services	Coly Valley
Living Environment Deprivation	Honiton St Michael's
Crime	Coly Valley

This graph shows the range of deprivation in the Honiton St Michael's division. The larger the green bar the more variation there is within the area.



## Income

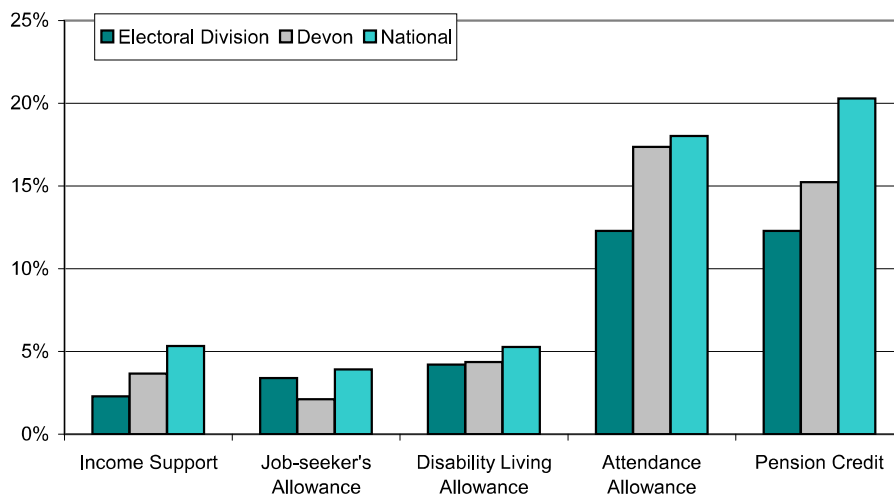
Income data are available at Middle Super Output Area (MSOA) level. MSOAs cover a population of about 7,500 but do not align well with electoral division boundaries. The figures provided below include all MSOAs where a substantial part falls inside the electoral division and as such will give a good indication of income levels in the area.

The figures shown below for wards are estimates based on the number of households in that ward and which MSOA those households are within.

	<i>Coly Valley</i>	<i>Honiton St Michael's</i>	<i>Electoral Division</i>	<i>East Devon</i>	<i>Devon</i>	<i>National</i>
Average income (£)	31,581	32,584	32,185	30,365	31,243	35,101

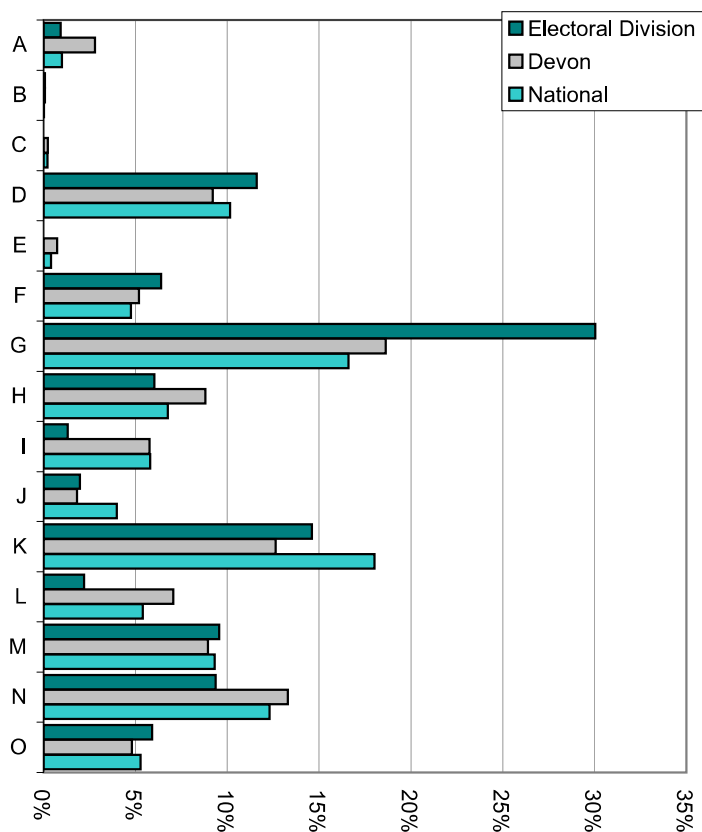
## Benefits

Percent of:	<i>Coly Valley</i>	<i>Honiton St Michael's</i>	<i>Electoral Division</i>	<i>East Devon</i>	<i>Devon</i>	<i>National</i>
16-59 year olds claiming Income Support	1.7%	3.1%	2.3%	2.9%	3.7%	5.3%
16-64 year olds claiming Job Seekers Allowance	2.0%	2.4%	3.4%	1.8%	2.1%	3.9%
Total population claiming Disability Living Allowance	2.7%	3.8%	4.2%	3.8%	4.4%	5.3%
65 and older claiming Attendance Allowance	14.8%	17.3%	12.3%	17.0%	17.4%	18.0%
60 and older claiming Pension Credit	9.3%	15.0%	12.3%	12.4%	15.2%	20.3%



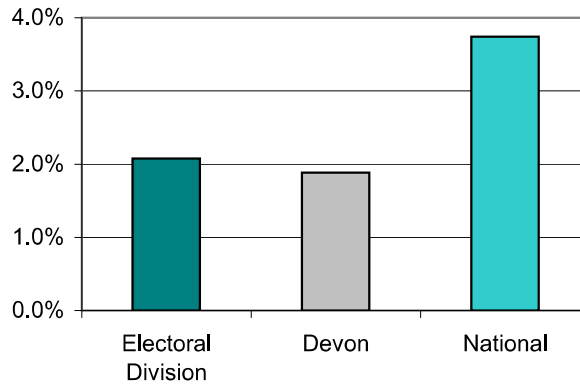
# Employment

Percent of all employees	Coly Valley	Honiton St Michael's	Electoral Division	East Devon	Devon	National
A : Agriculture & forestry	2.8%	0.0%	0.9%	3.7%	2.8%	1.0%
B : Fishing	0.2%	0.0%	0.1%	0.1%	0.1%	0.0%
C : Mining & quarrying	0.0%	0.0%	0.0%	0.3%	0.2%	0.2%
D : Manufacturing	20.9%	7.3%	11.6%	7.1%	9.2%	10.2%
gas & water	0.0%	0.0%	0.0%	0.0%	0.7%	0.4%
F : Construction	7.6%	5.8%	6.4%	5.6%	5.2%	4.8%
G : Wholesale & retail trade	14.7%	37.2%	30.0%	19.7%	18.6%	16.6%
H : Hotels & restaurants	10.6%	3.9%	6.0%	11.0%	8.8%	6.8%
I : Transport, storage & comms	1.8%	1.1%	1.3%	6.9%	5.8%	5.8%
J : Financial services	0.4%	2.7%	2.0%	2.6%	1.8%	4.0%
K : Real estate & business activities	7.1%	18.1%	14.6%	9.9%	12.6%	18.0%
L : Public admin & defence	1.2%	2.7%	2.2%	5.3%	7.1%	5.4%
M : Education	15.2%	6.9%	9.6%	8.2%	8.9%	9.3%
N : Health & social work	13.4%	7.5%	9.4%	14.4%	13.3%	12.3%
O : Other community services	4.1%	6.7%	5.9%	5.2%	4.8%	5.3%



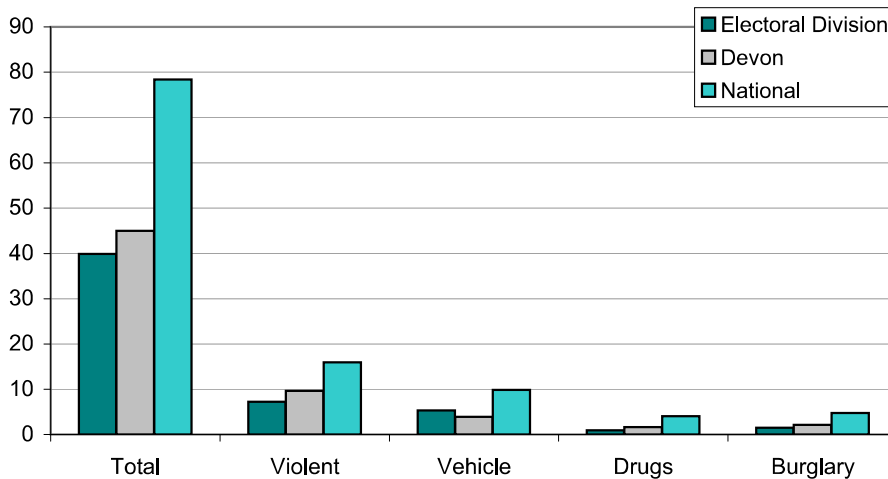
## Unemployment

	<i>Coly Valley</i>	<i>Honiton St Michael's</i>	<i>Electoral Division</i>	<i>East Devon</i>	<i>Devon</i>	<i>National</i>
Number unemployed	25	100	125	1,115	8,268	1,383,990
% of working age population	1.2%	2.6%	2.1%	1.6%	1.9%	3.7%



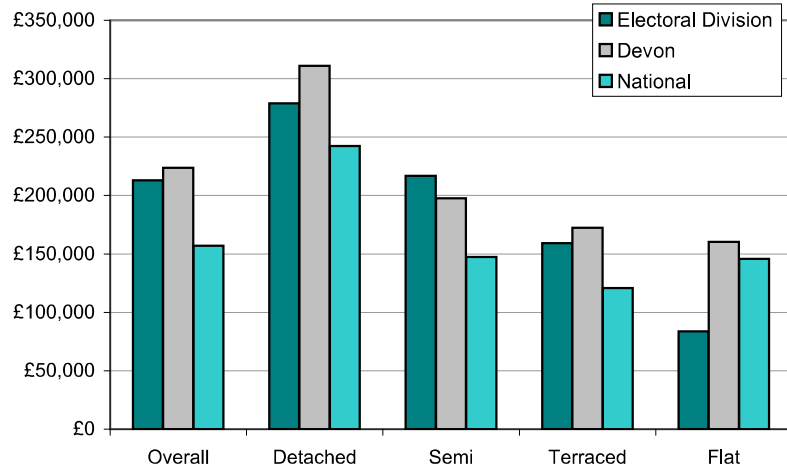
## Crime

Crimes per 1,000 population	<i>Coly Valley</i>	<i>Honiton St Michael's</i>	<i>Electoral Division</i>	<i>East Devon</i>	<i>Devon</i>	<i>National</i>
Total crime	27.5	47.6	39.9	38.9	45.0	78
Violent crime	2.8	9.9	7.2	8.1	9.6	15.9
Vehicle crime	2.6	7.1	5.3	3.5	3.9	10
Drug offences	0.7	1.1	0.9	1.9	1.6	4.0
House burglary	2.2	1.0	1.5	2.0	2.1	4.7

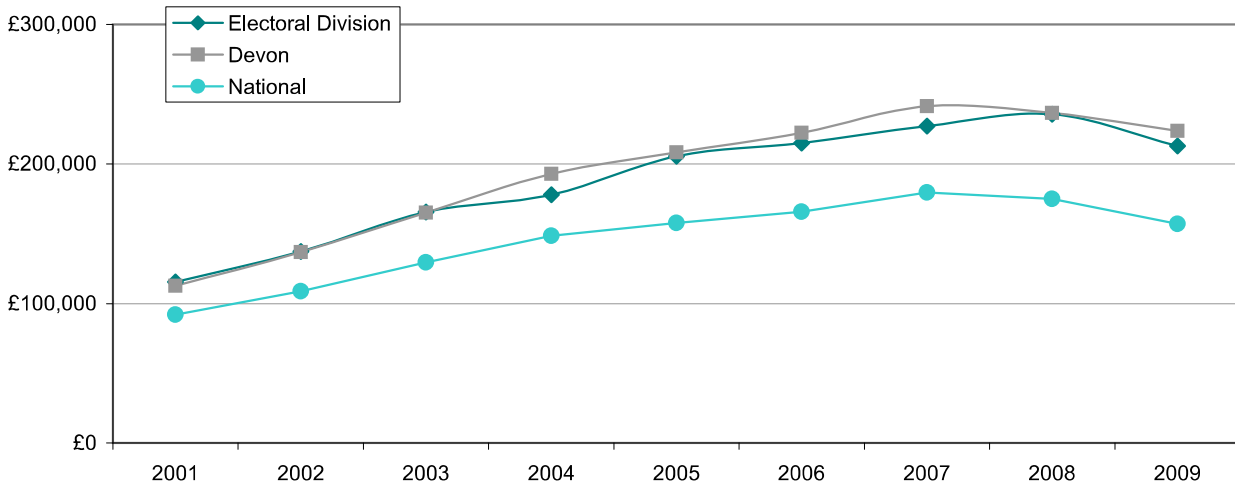


# House prices

2009 average prices (£)	Coly Valley	Honiton St Michael's	Electoral Division	East Devon	Devon	National
Overall	293,931	169,142	212,967	246,494	223,636	157,033
Detached	310,497	213,887	278,849	340,503	310,899	242,492
Semi-detached	368,143	191,171	216,979	214,777	197,547	147,464
Terraced	204,269	144,519	159,175	182,190	172,313	120,663
Flat/Maisonette	0	83,767	83,767	175,442	160,202	145,635



Overall average price (£)	2001	2002	2003	2004	2005	2006	2007	2008	2009
Honiton St Michael's	115,577	137,480	165,630	177,927	205,593	215,060	227,078	235,595	212,967
Devon	112,730	136,964	165,224	193,049	208,325	222,466	241,522	236,700	223,636
England & Wales	92,189	108,981	129,626	148,705	157,774	165,907	179,678	175,124	157,033





## Place Survey

The 2008 Place Survey provides information on people's perceptions of their local area and the local services they receive. The survey collects information on 18 national indicators for local government, used to measure local government performance for 152 county councils, metropolitan district councils, London boroughs and unitary authorities.

Further information can be found on the Department for Communities and Local Government's website:  
[www.communities.gov.uk](http://www.communities.gov.uk)

Figures are the proportion of people responding to the survey who live in the Honiton St Michael's electoral division. Due to the relatively small number of people surveyed in each electoral division the results may be unreliable, but they will give an indication of feelings within the area - 103 people were surveyed in the Honiton St Michael's electoral division.

### What things are most important in making somewhere a good place to live?

54%	Health services
50%	The level of crime
33%	Clean streets
29%	Shopping facilities
26%	Affordable decent housing

### What things most need improving in this area?

43%	Activities for teenagers
41%	Road and pavement repairs
39%	Public transport
31%	Affordable decent housing
24%	Wage levels and cost of living

People saying they are very satisfied or fairly satisfied with	Electoral division	Devon
Their local area as a place to live	92%	89%
Their local council	57%	52%
Their county council	49%	45%

# Education

Coly Valley  
 Honiton St Michael's  
 Electoral Division  
 East Devon  
 Devon  
 National

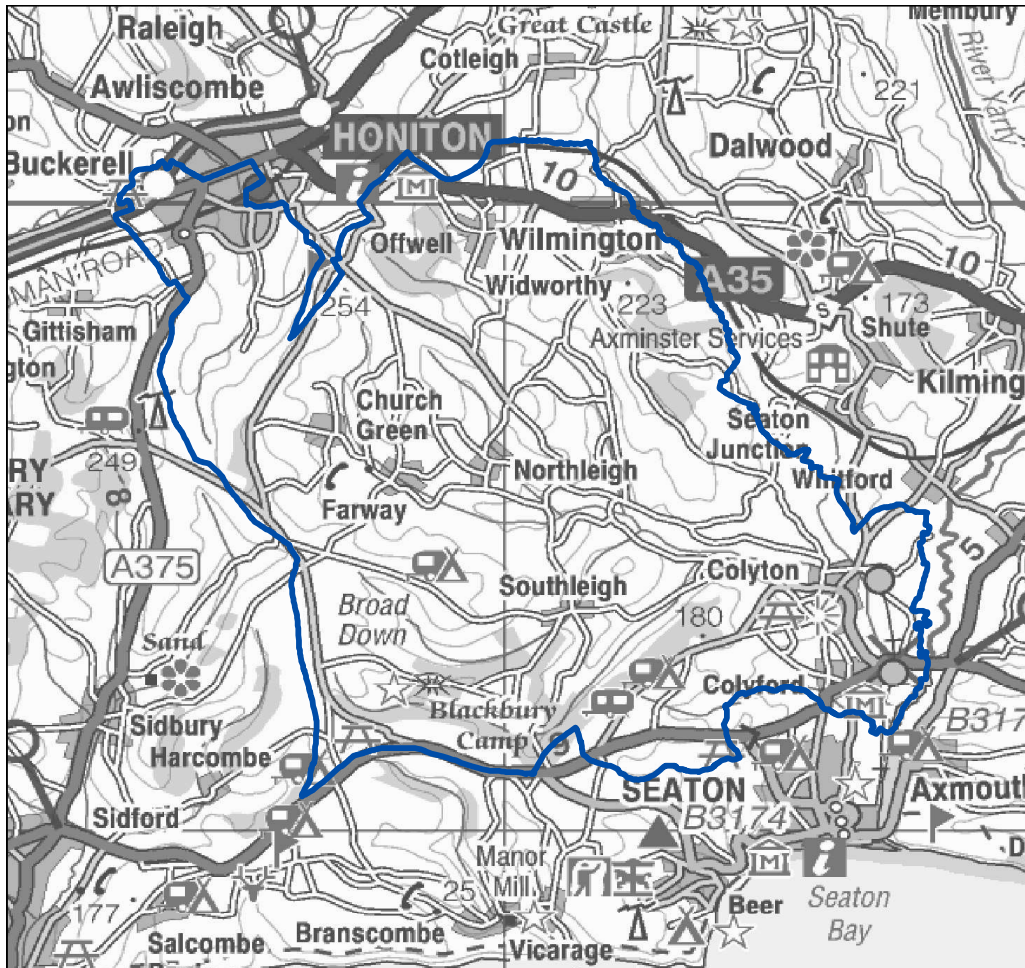
% children achieving Key Stage 2 level 4 or above in

English	82%	70%	75%	84%	81%	80%
Maths	84%	73%	78%	83%	80%	79%
Science	90%	90%	90%	92%	90%	88%

% children achieving 5 or more GCSEs at grades

A*-C	81%	63%	70%	69%	66%	70%
A*-C including English and Maths	68%	43%	53%	58%	51%	51%
A*-G	92%	95%	94%	93%	94%	92%

Honiton St Michael's area



## Further information and sources

Population : 2001 - Census © Crown copyright  
2008 - Registrar General's Mid Year Estimates, Office for National Statistics © Crown copyright  
Age breakdown - Devon figures from NHS Devon, national figures from 2009 Mid Year Estimate,  
Office for National Statistics © Crown copyright

Population attributes : Mosaic Public Sector © Experian

Deprivation : Indices of Deprivation 2007  
Department for Communities and Local Government, © Crown copyright  
<http://www.communities.gov.uk/indices>

Income : Model-Based Estimates at MSOA Level, 2007/08  
Crown Copyright ©

Benefits : May 2009 - Department for Work and Pensions  
© Crown copyright  
<http://research.dwp.gov.uk/asd/tabtool.asp>

Employment : Annual Business Inquiry 2007  
Office for National Statistics © Crown copyright  
<http://www.nomisweb.co.uk>

Unemployment : April 2009 - Office for National Statistics  
© Crown copyright  
<http://www.nomisweb.co.uk>

Crime : April 2008 - March 2009  
Devon and Cornwall Constabulary

Education : Children and Young People's Directorate, Devon County Council  
Department for Education © Crown Copyright  
Local figures relate to children living in an area and attending a Devon County Council maintained school. As such figures may vary from nationally published data.

House prices : Land Registry  
© Crown copyright  
National figures relates to England and Wales. Overall national house price is weighted by number of sales in each month. National house prices by type are simple averages of monthly averages - this figure may be skewed if there were a large number of sales in a particular month.

Place Survey : Department for Communities and Local Government  
© Crown copyright  
<http://www.communities.gov.uk/publications/localgovernment/newplacesurvey>

This profile has been produced by the County Council's Strategic Intelligence Unit. For further information please contact us.

Email: [StrategicIntelligence@devon.gov.uk](mailto:StrategicIntelligence@devon.gov.uk)

Telephone: 01392 382738