

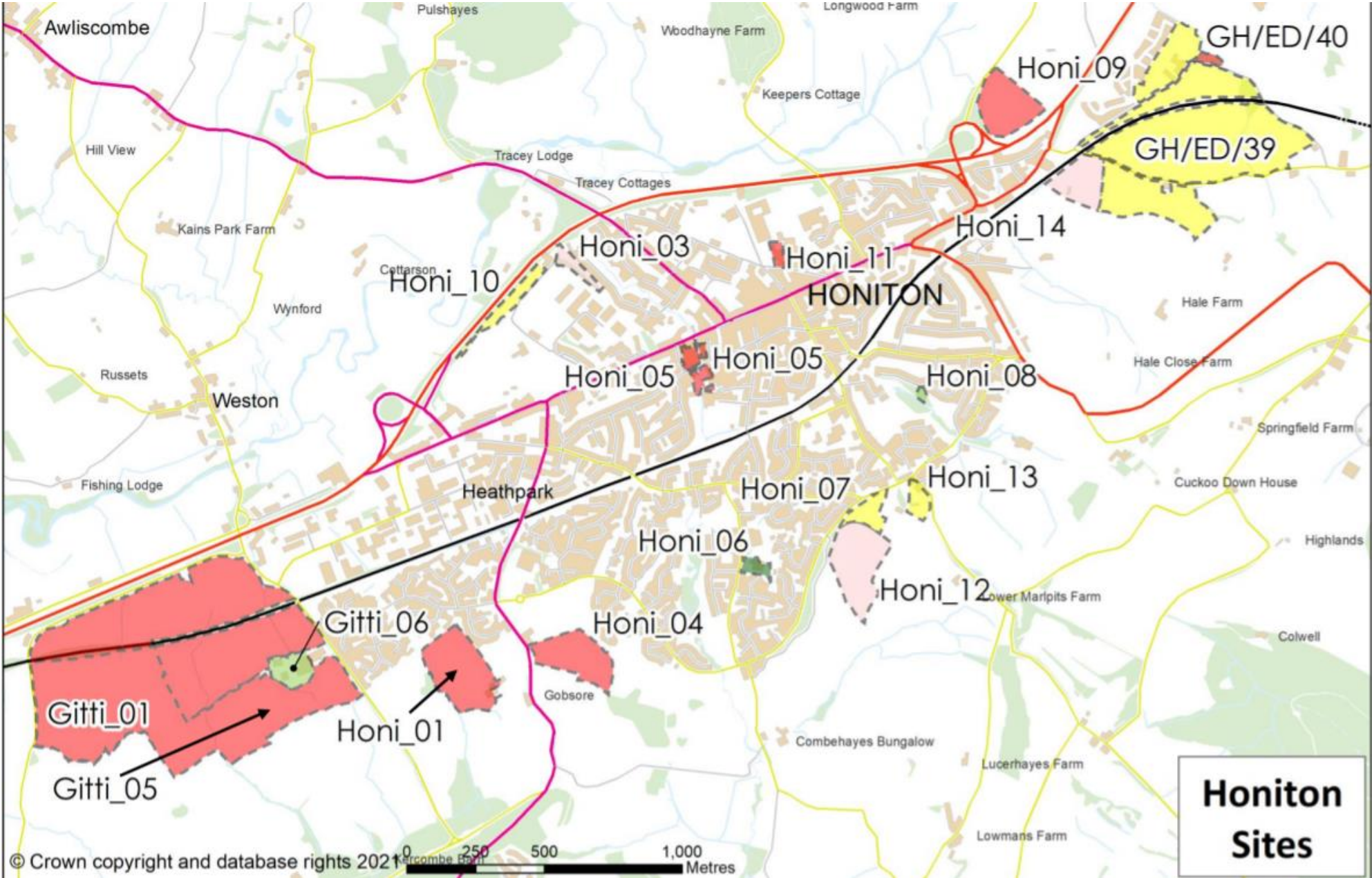
Land West of Hayne Lane

Sites Gitti_01 and 05

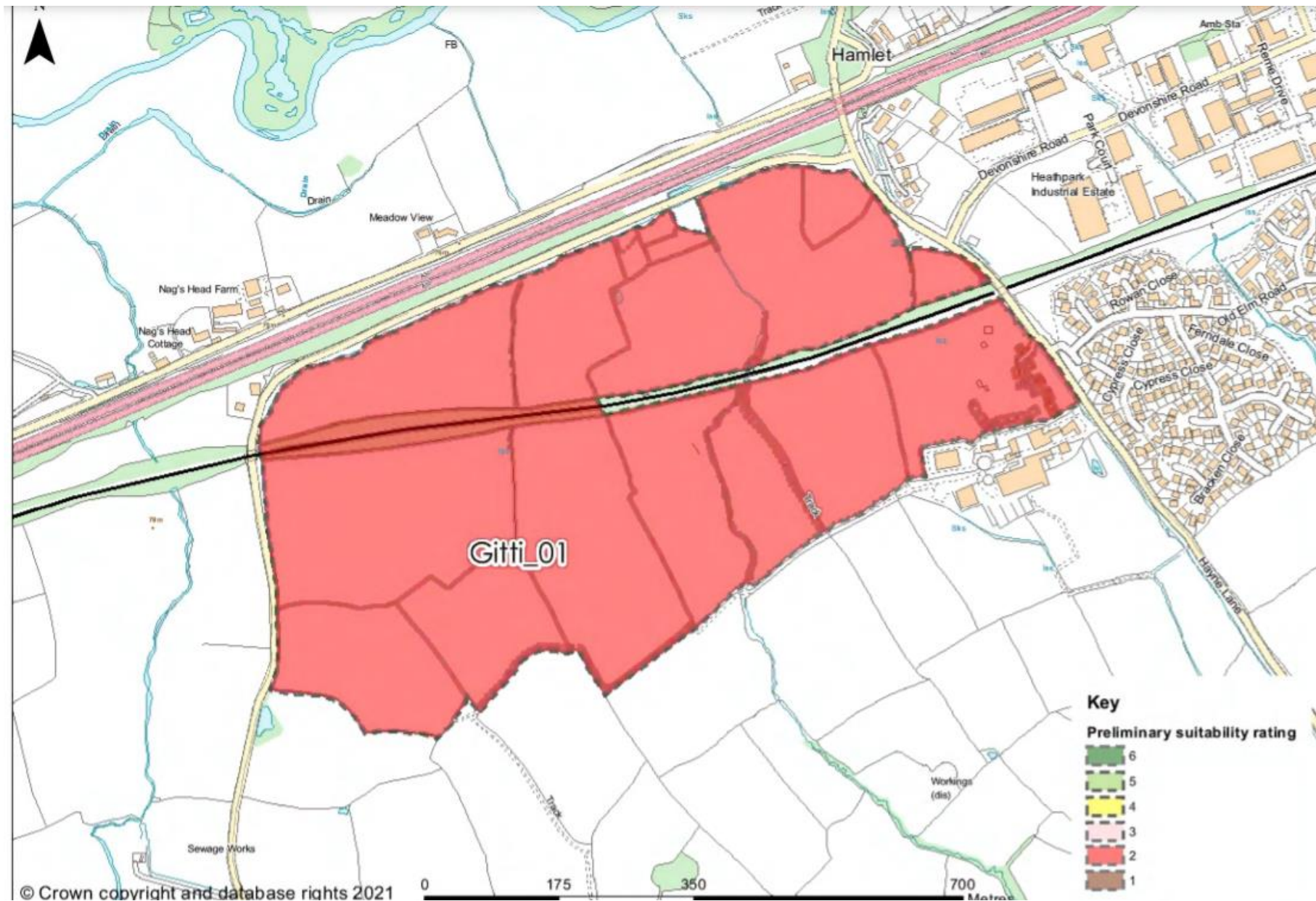
On behalf of: The Combe Estate



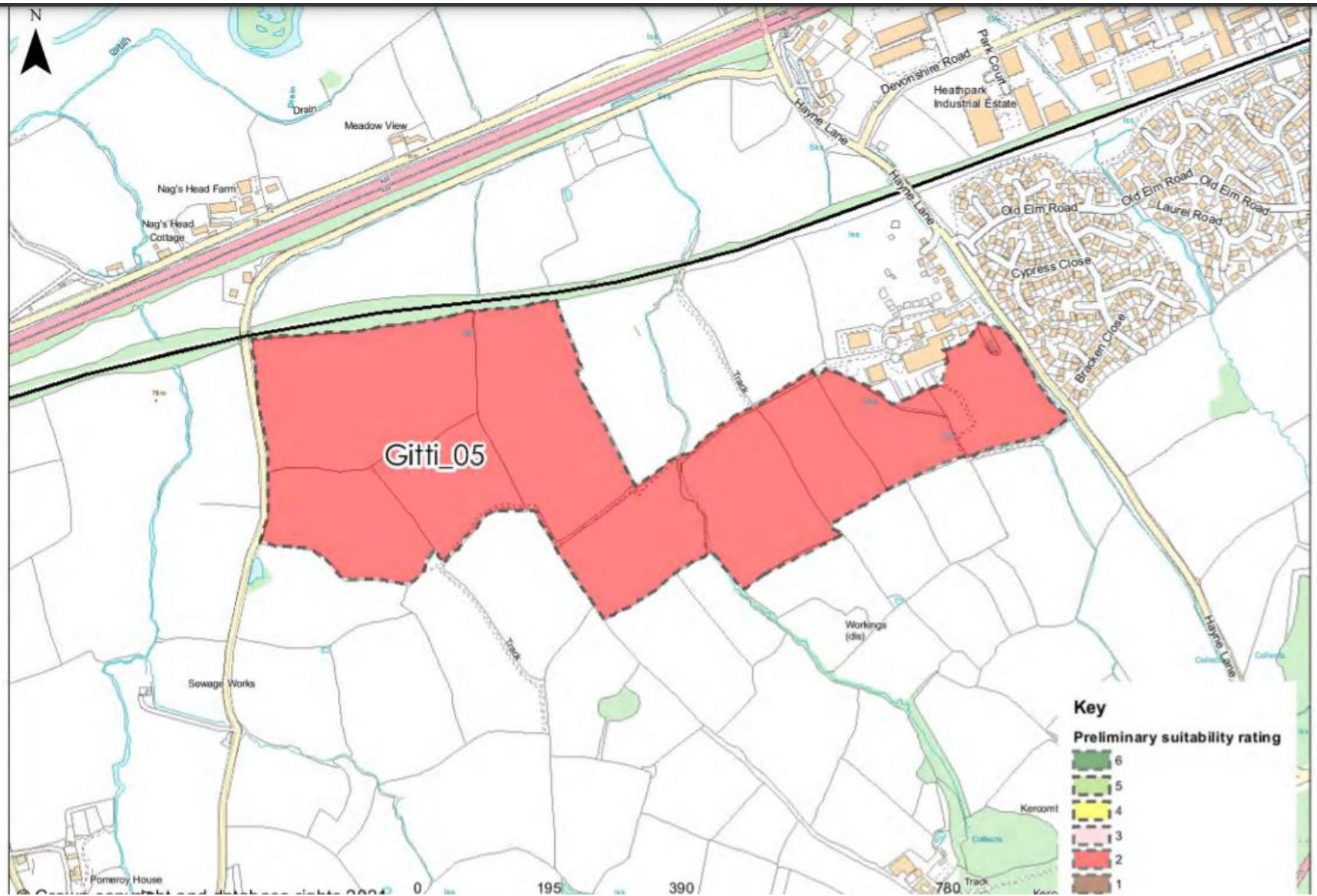
Honiton Wide Context



Gitti_01



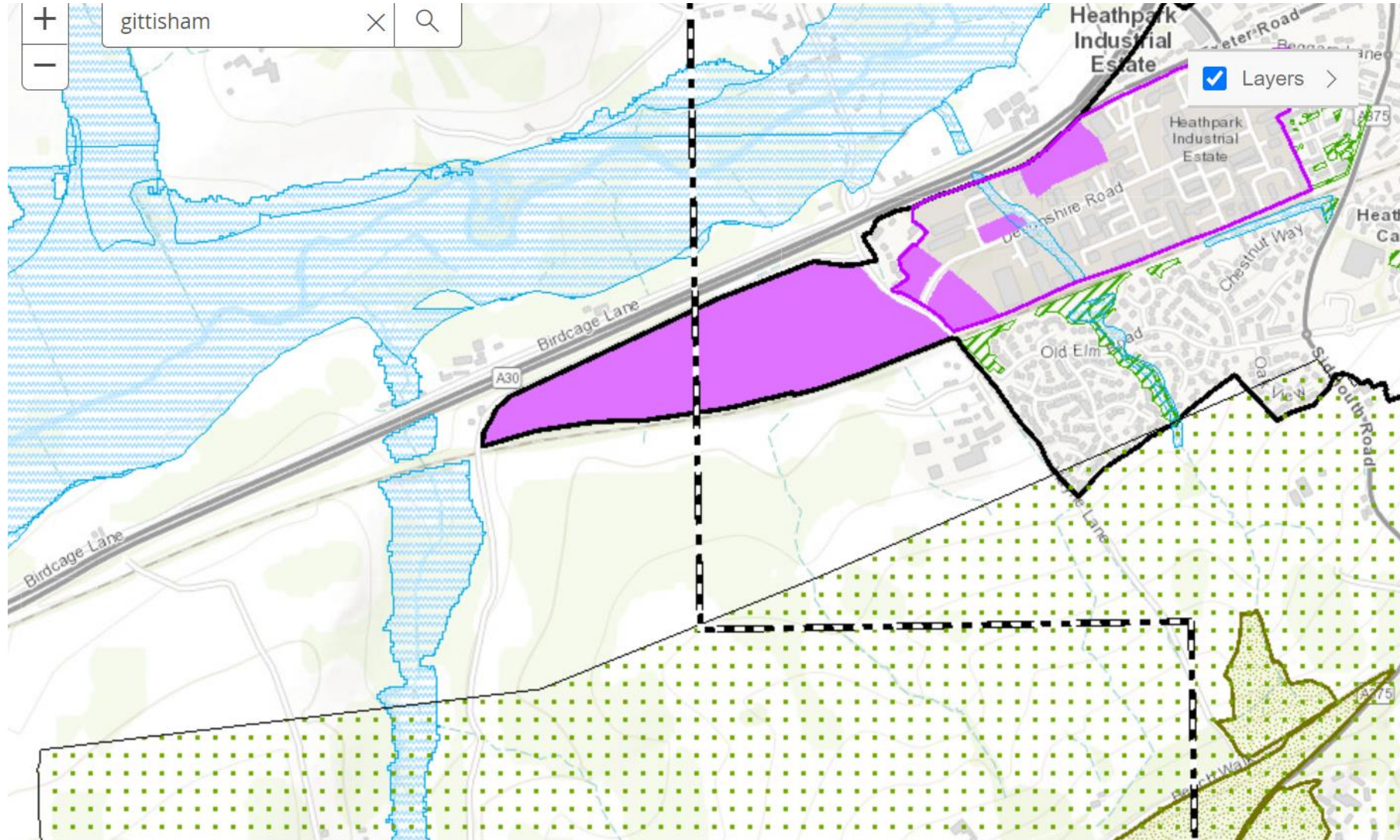
Gitti_05



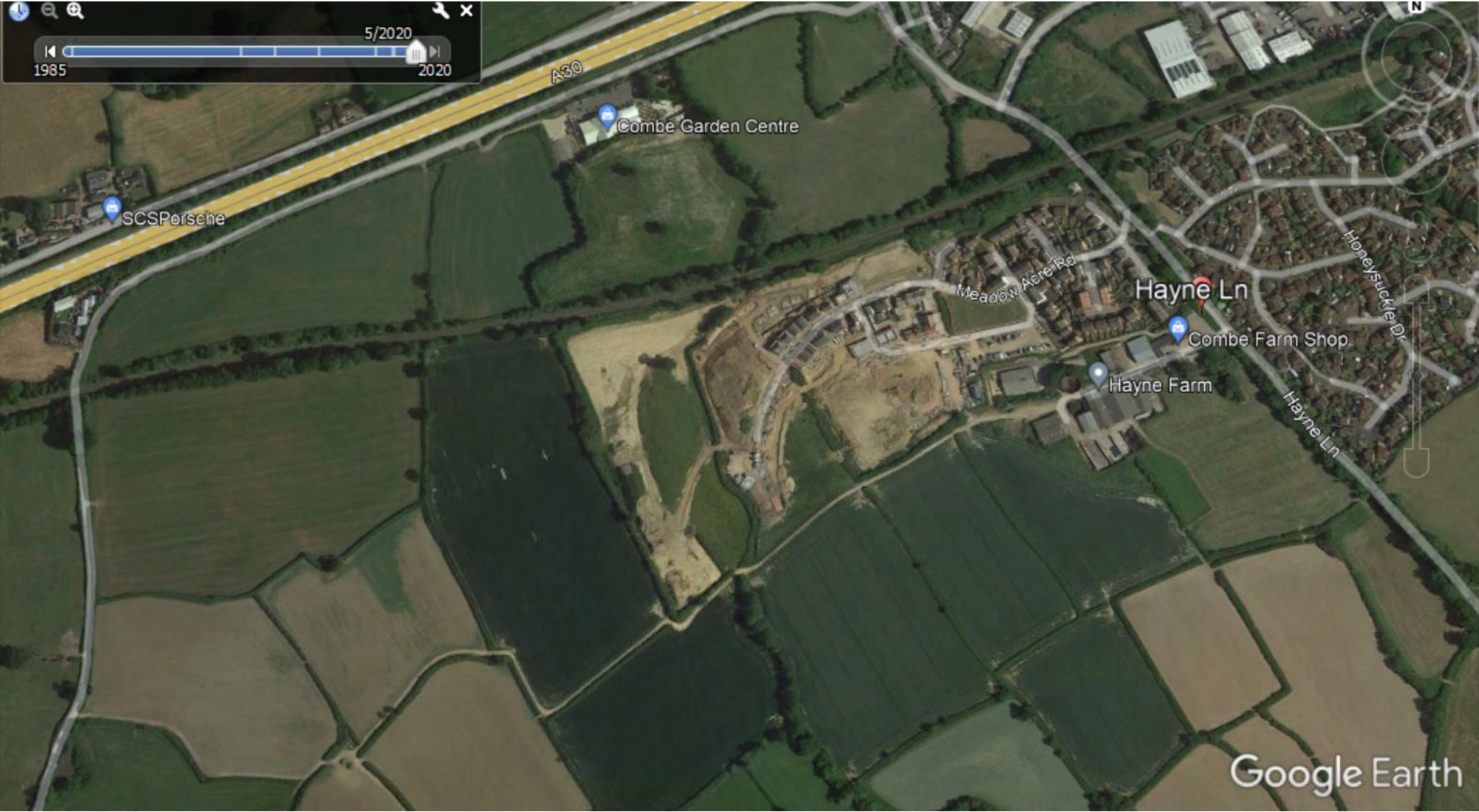
Topography/features



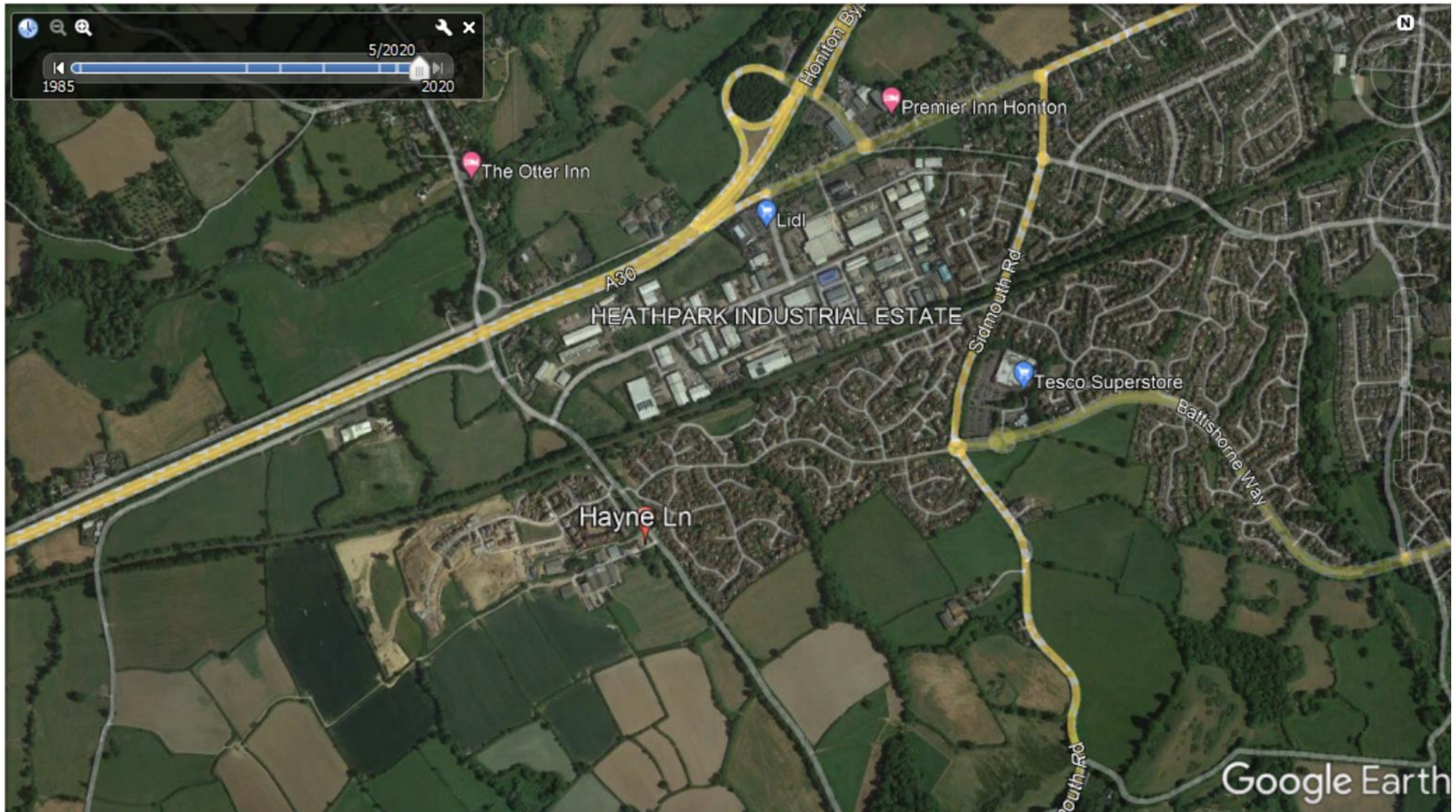
EDDC designations



Aerial Photo



Context Photo



Public Transport

Table 8.1: Existing Bus Services from *Honiton Heathpark Industrial Estate, Heathpark Way*

Service Number	Operator	Destinations	Approx. Typical Frequency		
			Mon - Fri	Sat	Sun
4, 4A, 4B	Stagecoach South West	Axminster - Honiton - Ottery St Mary - Cranbrook - Exeter City Centre	2 per hour	2 per hour	4 Daily Services
387	Dartline Coaches	Taunton - Honiton - Sidmouth	1 Daily Service	1 Daily Service	-
694	Dartline Coaches	Honiton - Feniton - Cullompton - Honiton	2 Daily Services	1 Daily Service	-

Table 8.2: Existing Bus Services from *Heathpark Estate, Old Elm Road*

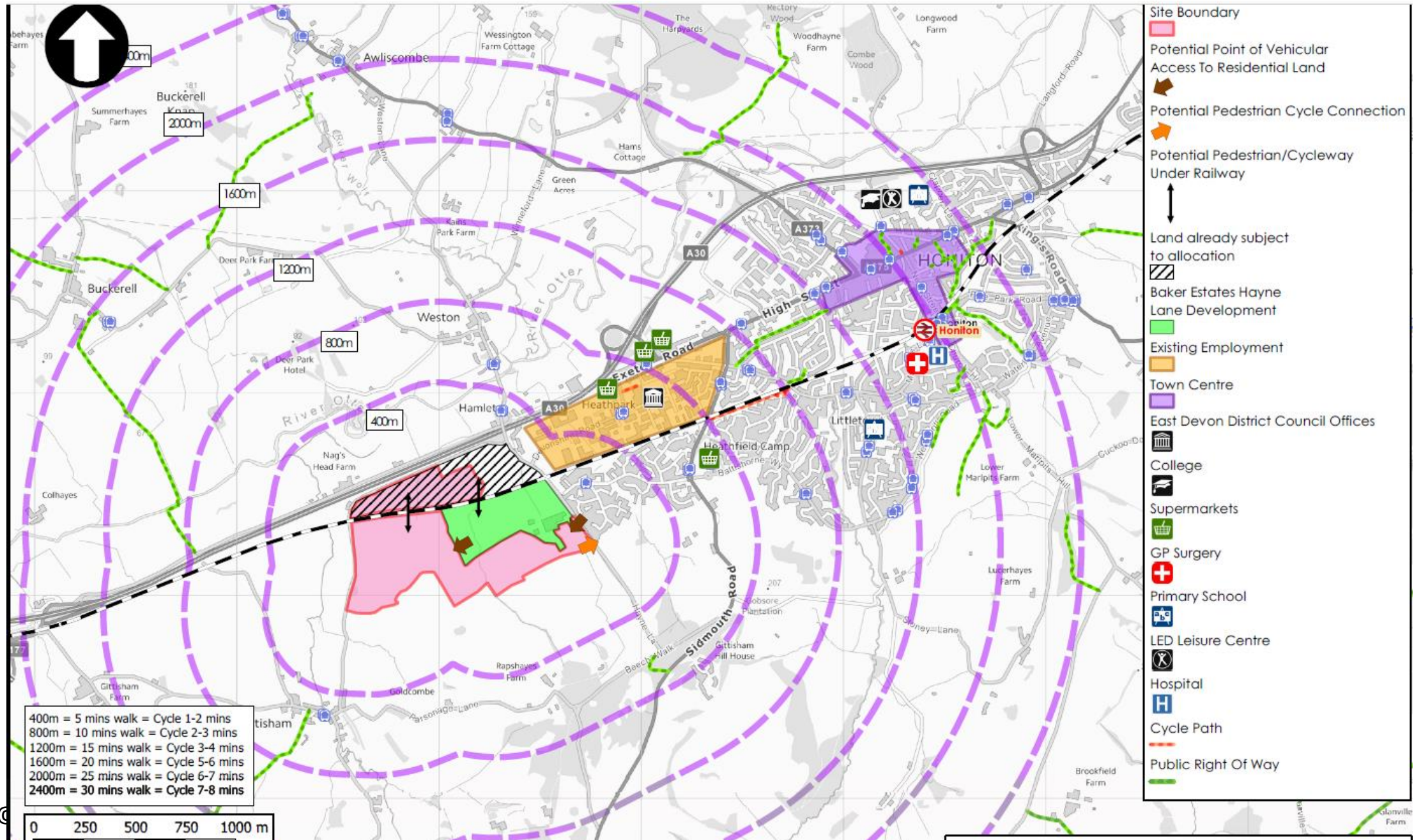
Service Number	Operator	Destinations	Approx. Typical Frequency		
			Mon - Fri	Sat	Sun
9	Stagecoach South West	Honiton - Sidford - Sidmouth - Exeter City Centre	4 Daily service	4 Daily service	-

Service Number	Operator	Destinations	Approx. Typical Frequency		
			Mon - Fri	Sat	Sun
367	Dartline Coaches	Honiton Town Service - Heathfield & Mill Street	Hourly	Hourly	-

Sources: travelinesw.com

03.03.2021

Accessibility Plan



Delivering an Integrated Mixed-Use Allocation

Figure 4.1 – Potential Locations for Active Travel Access

