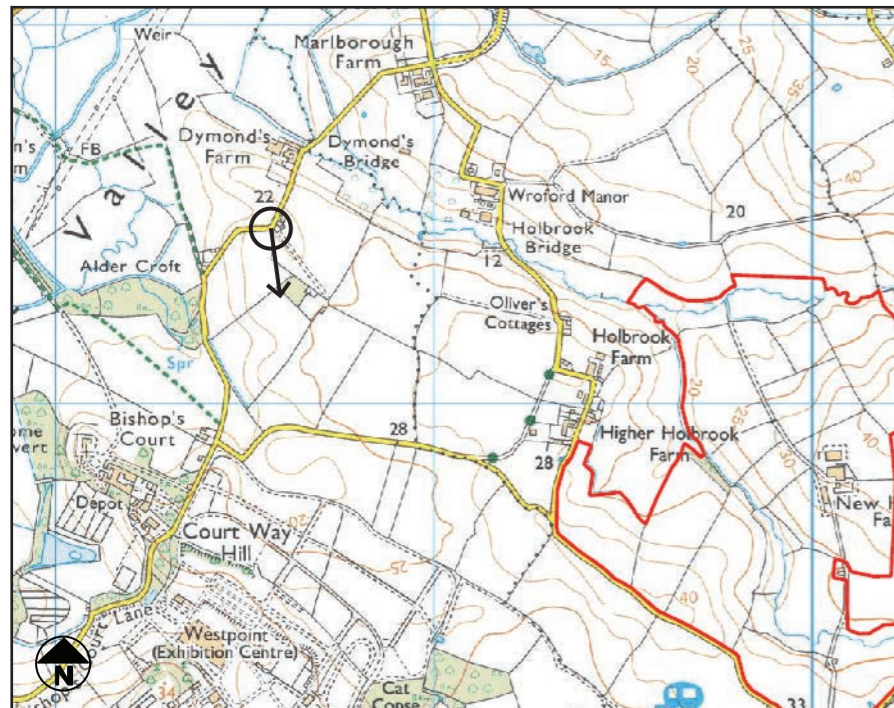




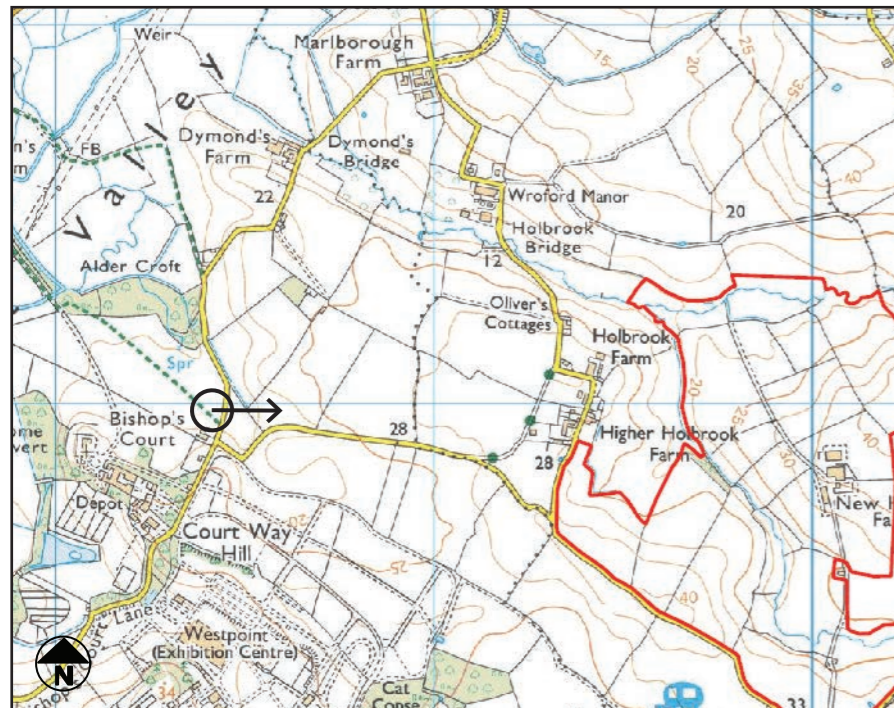
VIEWPOINT PHOTOGRAPH 10 (SOUTH)
Facing South on Bishops Court Lane by Dymond's Farm





VIEWPOINT PHOTOGRAPH 11 (EAST)

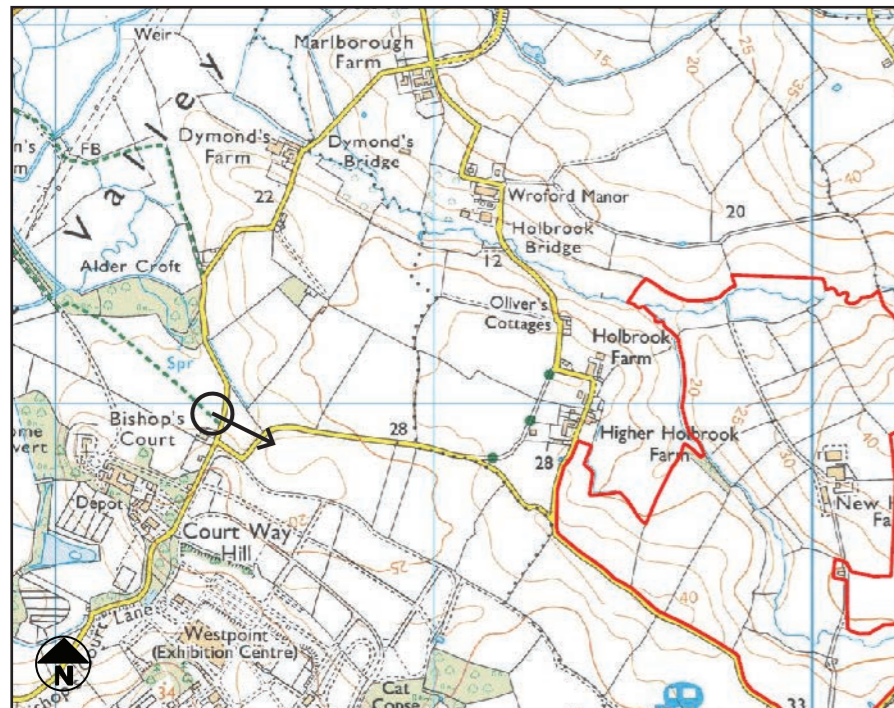
Facing East on Bishop's Court Lane by PRoW





VIEWPOINT PHOTOGRAPH 11 (SOUTH-EAST)

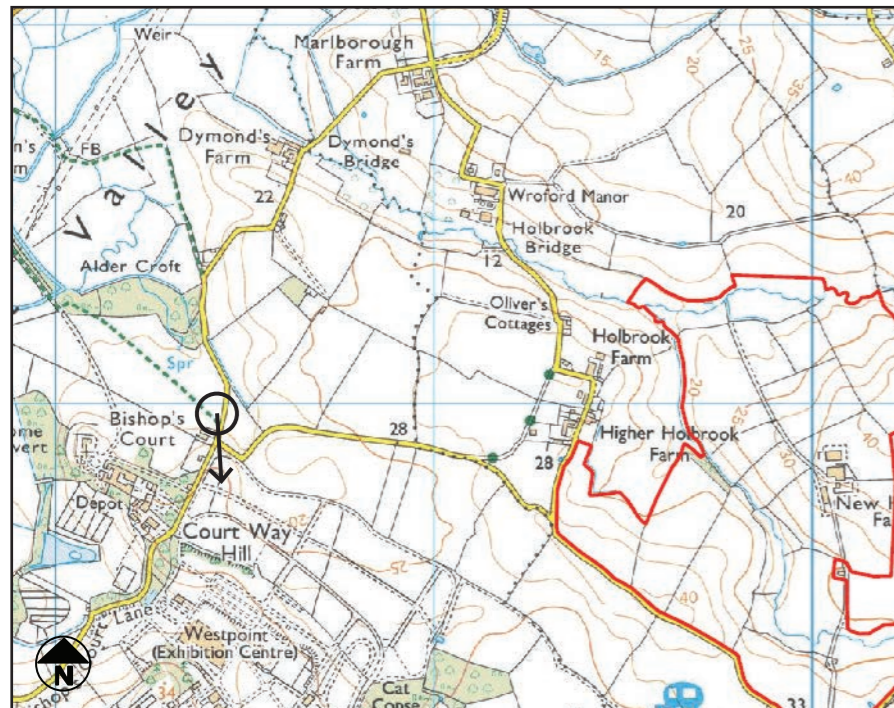
Facing South-East on Bishop's Court Lane by PRoW





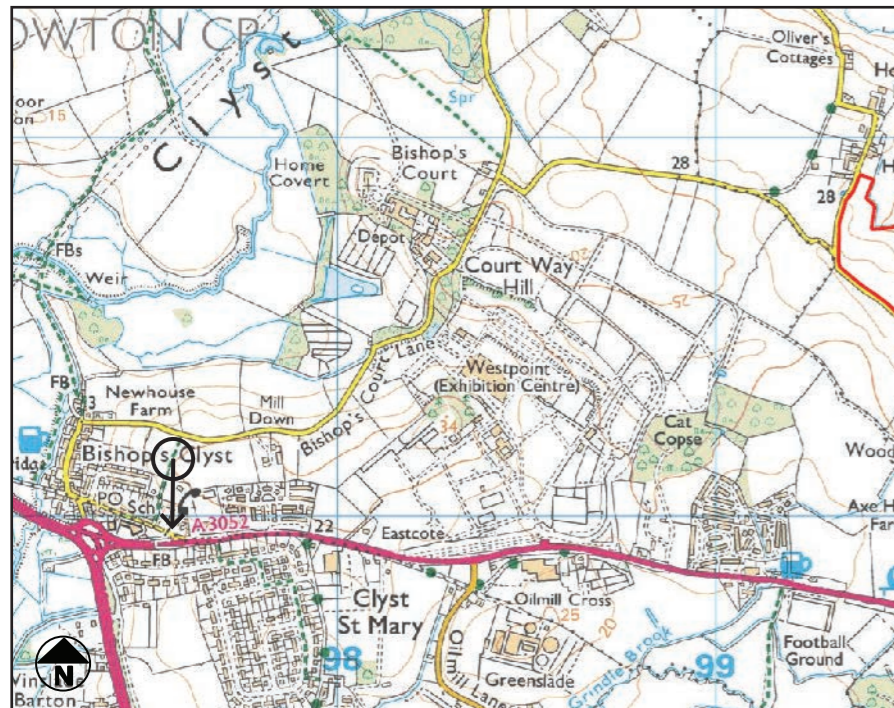
VIEWPOINT PHOTOGRAPH 11 (SOUTH)

Facing South on Bishops Court Lane by PRow



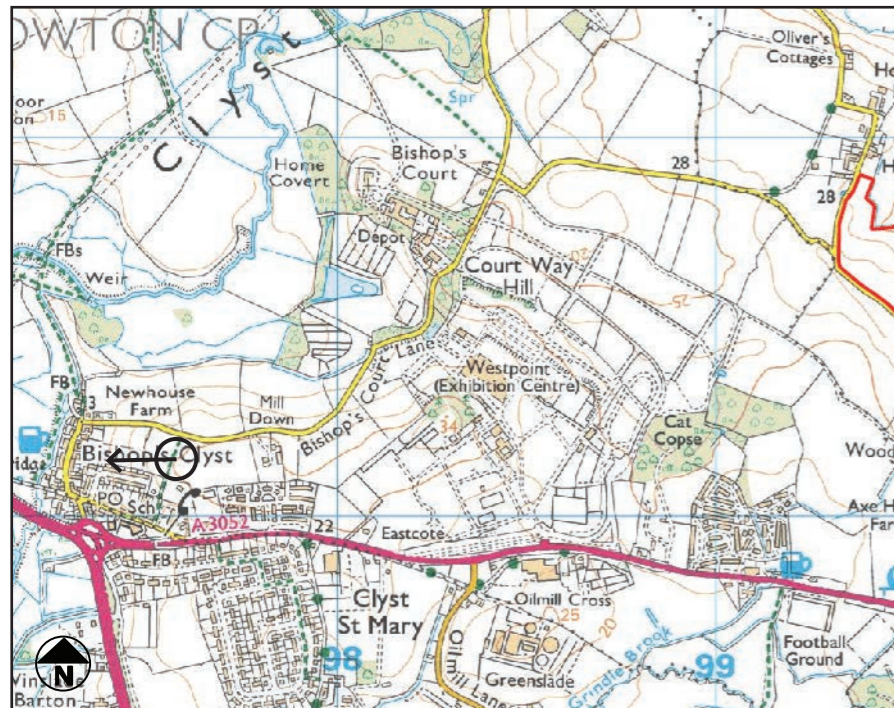


VIEWPOINT PHOTOGRAPH 12 (SOUTH)
Facing South on PRoW (Site not visible but within ZTV)





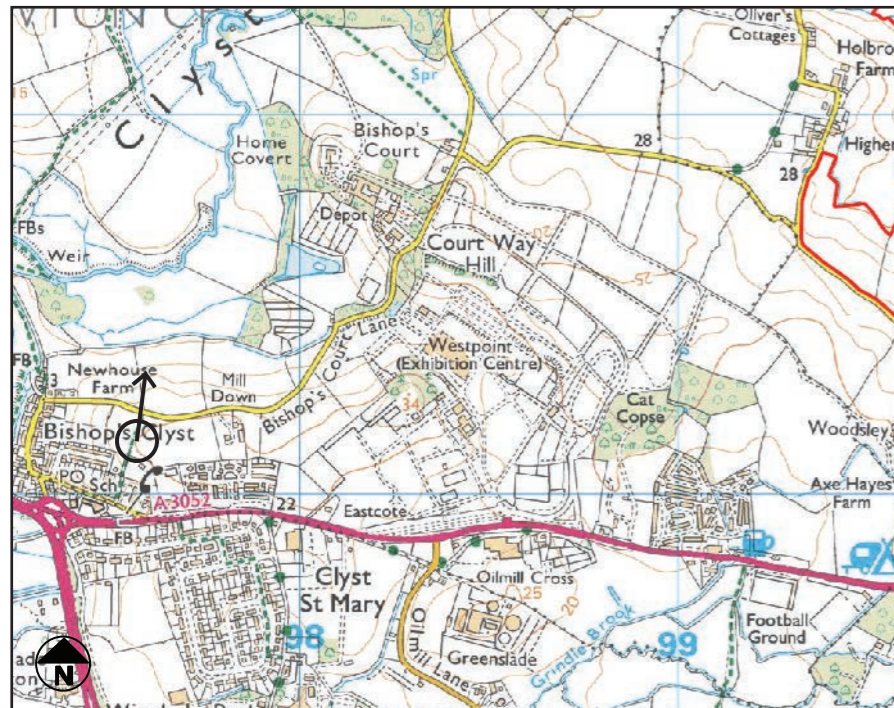
VIEWPOINT PHOTOGRAPH 12 (WEST)
Facing West on PRow (Site not visible but within ZTV)





VIEWPOINT PHOTOGRAPH 12 (NORTH)

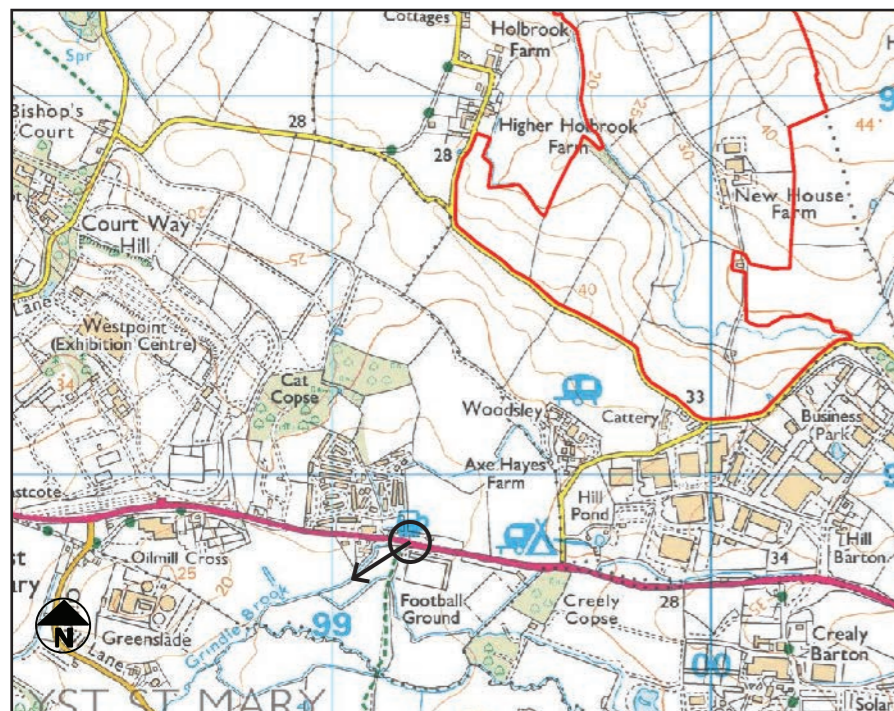
Facing North on PRoW (Site not visible but within ZTV)





VIEWPOINT PHOTOGRAPH 13 (SOUTH-WEST)

Facing South-West from A3052 including PRow in field





VIEWPOINT PHOTOGRAPH 13 (NORTH-WEST)
 Facing North-West from A3052 including PRow in field

