

# Legend

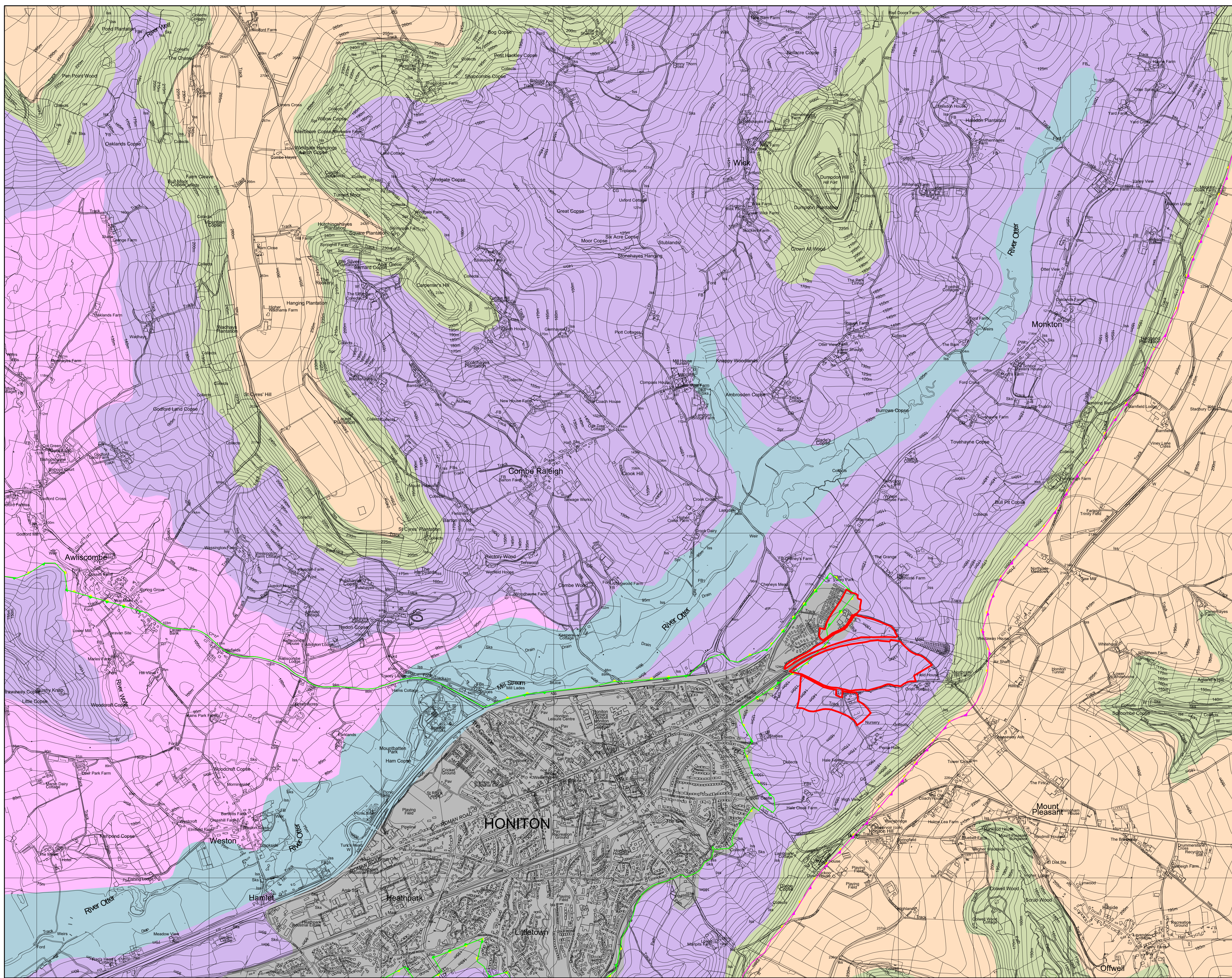
- Site Boundary
  
- National Landscape Character Area (NCA) Profiles #  
 The extent lies entirely within Landscape Character Area 147: Blackdowns
  
- East Devon District Council Landscape Character Types/Areas ~

  - Type 1: Plateaux  
Area A: Open inland planned plateaux
  
  - Type 2: Scarp Slopes  
Area A: Steep wooded scarp slopes
  
  - Type 3: Valley Slopes  
Area A: Upper farmed and wooded valley slopes
  
  - Type 3: Valley Slopes  
Area B: Lower rolling farmed and settled valley slopes
  
  - Type 3: Valley Slopes  
Area C: Sparsely settled farmed valley floors
  
  - Main cities and towns

  
- Devon County Council Landscape Character Areas \*

  - Blackdown Hills
  
  - East Devon Central Ridge
  
  - Clyst Lowland Farmlands

Sources:  
 # OS Mapping  
 # Natural England GIS Data Set  
 # East Devon and Blackdown Hills District Council Landscape Character Assessment, Consultation Draft, September 2018  
 \* Devon County Council Landscape Characterisation September 2016, Updated March 2021  
 Data collected for constraints and analysis mapping is based on publicly available sources at the time of preparation inserted using the British National Grid and may itself not be accurate. Sources shall not be liable for the accuracy of data derived from external sources.



**Figure 3**  
 Project: Land off Northcote Road, Honiton  
 Drawing Title: Landscape Character Plan  
 Date: 26.03.2025 Scale: 1:10,000 @A1, 1:20,000 @A3  
 Project No: 333102063 Drawing No: LN-LP-03  
 Drawn by: DW, Checked by: SC  
 Revision: \_\_\_\_\_

**Stantec**  
 Stantec UK Limited  
 101 Victoria Street  
 Bristol  
 BS1 6NU  
 T: 0117 929 9677  
 stantec.com/uk